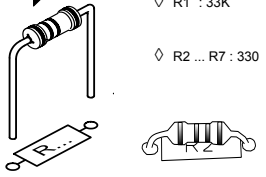


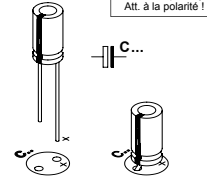
START 1

Resistor - Weerstand - Résistance - Widerstand - Resistencia - Motstand - Vastus - Resistenze



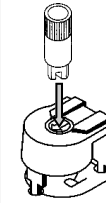
- ◇ R1 : 33K (Orange, Orange, Orange) - (Oranje, Oranje, Oranje) - (Oranssi, Oranssi, Oranssi) - (Naranjado, Naranjado, Naranjado) - (Laranja, Laranja, Laranja) - (Aranciato, Aranciato, Aranciato)
- ◇ R2 ... R7 : 330 (Orange, Orange, Brown) - (Oranje, Oranje, Bruin) - (Orange, Orange, Brun) - (Orange, Orange, Braun) - (Orange, Orange, Brun) - (Oranssi, Oranssi, Ruskea) - (Naranjado, Naranjado, Marrón) - (Laranja, Laranja, Castanho) - (Aranciato, Aranciato, Marrone)

11 Electrolytic capacitor

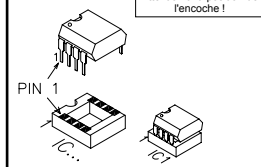


◇ C2 : 100µF / 25V

12 Axe



13 IC

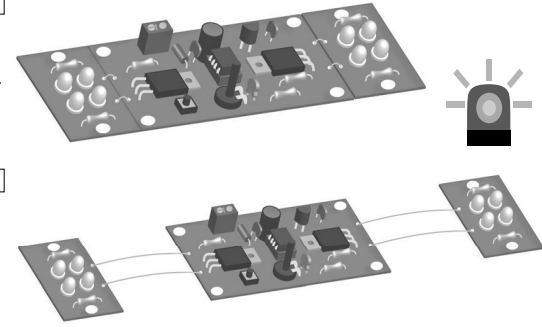


◇ IC1 : VMK180 (programmed PIC12F629)

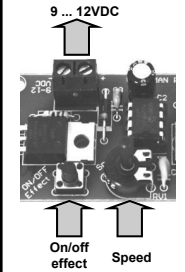


14 LED-board

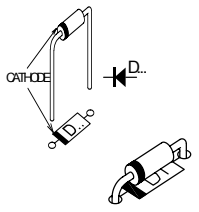
- A Jumper**
- or of ou oder o
- ◇ A (+) 2x
 - ◇ C (-) 2x
- B wire (4x)**
- ◇ A (+) 2x
 - ◇ C (-) 2x



15 Connection

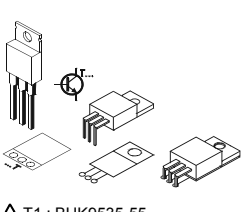


2 Diodes



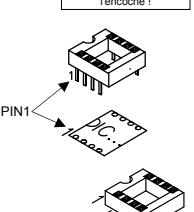
◇ D1 : 1N4007

3 Transistor



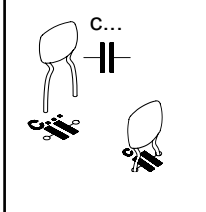
◇ T1 : BUK9535-55
◇ T2 : BUK9535-55

4 IC sockets



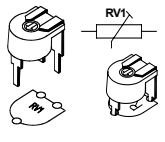
◇ IC1 : 8p

5 Ceramic capacitors



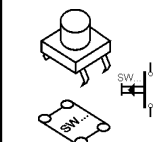
◇ C1 : 100pF (101)
◇ C3,C4 : 100nF (104)

6 Trimmer



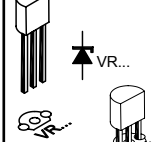
◇ RV1 : 22K "speed"

7 Push button



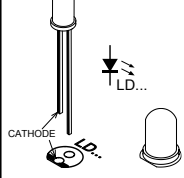
◇ SW1 : on/off - effect

8 Voltage regulator



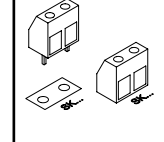
◇ VR1 : UA78L05

9 LEDs



◇ LD1 ... LD8 : 5mm

10 Terminal block



◇ SK1

16

