



USER MANUAL

MLE-2404 / MLE-2704

1. Safety information

In order to reduce the risk of electric shock, please do not disassemble this device without permission. There are no user serviceable parts inside. All maintenance work must be carried out by professionals.



This symbol indicates that there is high voltage inside. Do not touch any parts inside this product to avoid danger.



This symbol reminds you that this product is accompanied by important instructions on operation and maintenance

- Slots and holes in the chassis and at the rear or bottom are designed to provide necessary ventilation. To ensure proper operation of the device and prevent overheating, do not block, or cover these slots and holes.
- Do not place this device in restricted spaces, such as bookcases or built-in cabinets, unless adequate ventilation is provided.
- Do not place this device near or over electric heaters or radiators, or in direct sunlight.
- Do not place containers containing water (such as vases, etc.) on this device, as this may result in fire or electric shock.
- Do not expose this device to rain or install it near water (such as near a bathtub, sink, kitchen sink, or laundry sink, wet basement, or near a swimming pool, etc.). If the device accidentally gets wet, unplug it immediately and contact your authorized dealer.
- To better protect this device, please unplug it and disconnect all connections in lightning weather or when it is left unattended or unused for a long time. This can prevent this device from being damaged during lightning or in the case of power line surge.
- Before connecting the power cord to the power adapter socket, make sure that the voltage parameters of the power adapter match your local power supply.
- Never insert any metal objects into the holes of this device, which may cause a risk of electric shock.
- Be sure to plug the power cord firmly in. When unplugging the power cord from the wall socket, be sure to grab the power plug and unplug it from the socket. Never unplug the power cord by pulling it. Do not touch the power cord with wet hands.
- If this device is not working properly, especially if it emits any unusual sound or smell, please unplug it immediately and contact your authorized dealer.
- If you plan to leave this device unused for a long time, or if you want to go away from home, please make sure to unplug the power plug from the socket.
- To clean the device, unplug the power cord from the wall outlet and wipe it with a soft dry cloth. No chemicals such as wax, benzene, alcohol, thinners, pesticides, air fresheners, lubricants or detergents are allowed.
- To prevent fire, please ensure that this product is always away from candles or other open flames.
- Only use with supplied Adaptor. The direct plug-in adaptor is used as disconnect device, the disconnect device shall remain readily operable. So, make sure there is space around the power outlet for easy access.
- Do not press the screen with your fingers for a long time, which may lead to abnormal screen images.

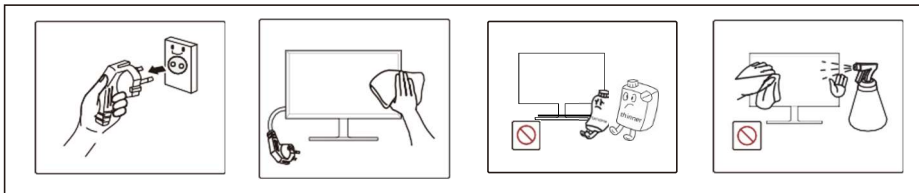
- Never scratch or hit the screen with any hard material, which may permanently scratch and damage the screen.
- When lifting or moving the monitor, do not touch the screen, so as not to damage the screen.

2. Clean the monitor

Please make sure that the monitor is disconnected from the power supply before cleaning the monitor.

Please wipe the monitor screen with a clean, soft cloth. Do not spray alcohol, active agent, and other detergents on the screen surface, otherwise the product may be damaged

Use a soft cloth dampened and wrung out to clean the housing part of the monitor. Do not use strong cleaners to clean the housing.



3. Monitor Inputs

HDMI Input



VGA Input



DC input (For power adaptor)



4. Monitor navigation buttons

MLE-2404

M = Activate menu

◀ = Left key, down key, Minus key

▶ = Right key, Up key, plus key

E = Return and exit functions. Automatically adjust in VGA mode.

⏻ = On / standby key

MLE-2704

M = Activate menu

◀ = Left key, down key, Minus key

▶ = Right key, Up key, plus key

AUTO = Return and exit functions. Automatically adjust in VGA mode.

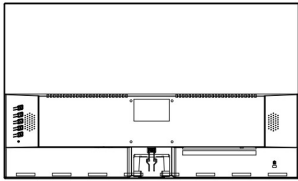
⏻ = On / standby key

5. Installation of base bracket

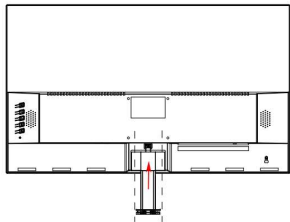
Note: Before assembling the product, place the product screen on a horizontal and stable plane in a face-down manner, and place a cushion or soft cloth when contacting the display surface.

MLE-2404

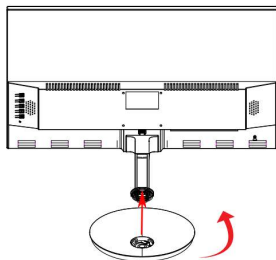
1. Place the monitor screen on a level platform after taking out the from box.



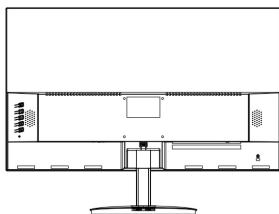
2. Insert bracket of stand to monitor case as picture shows.



3. Place the base of stand on a horizontal platform, insert it into the card slot and rotate it in the direction indicated on below picture. There will be a “pop” sound after it is installed well.

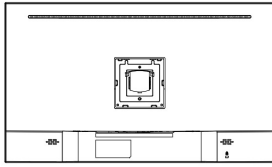


4. Place the monitor on a level and stable platform after the assembly has been completed.

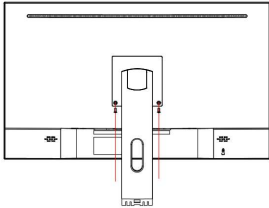


MLE-2704

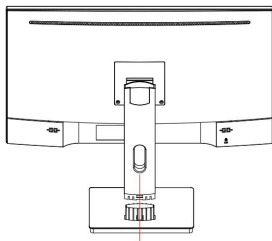
1. Place the monitor screen on a level platform after taking out the from box.



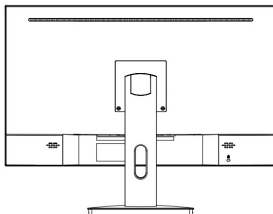
2. Install the bracket of stand with 2 screws to monitor case.



3. Place the base of stand on a horizontal platform, insert it into the card slot and rotate it in the direction indicated on below picture. There will be a “pop” sound after it is installed well.



4. Place the monitor on a level and stable platform after the assembly has been completed.



6. VESA measures for Wall mounting

Please note wall mounting kit is not included.

MLE-2404 - VESA 75x75

MLE-2704 – VESA 100x100 (You need to remove the 2 screws from stand holder to see the VESA holes)

7. Troubleshooting

- The monitor keeps turning on and off.

Solution: Check whether the signal wire is properly connected between the monitor and the PC host and the connection is secured in place.

- A blank area appears around the screen.

Solution: The blank area on the screen is not caused by the monitor, but by the graphics card or the host computer. To fix this problem, adjust the screen size parameters in the display or host system, and keep the driver of the graphics card up to date. (For more adjustment settings, please consult the graphics card or host manufacturer.)

- The power light is off, and the screen does not turn on.

Solution: Please check whether the power cord is properly connected. After the power connection is correct, please check whether the indicator light of the power adapter is on.

- The image is unclear and blurred.

Solution: Please check if the signal cable is firmly connected and try again after removing it. Try setting the resolution and refresh rate to recommended levels.

- The image is too bright or too dark

Solution: Please adjust the brightness and contrast to the appropriate values.

- Image lack of color

Solution: Please replace the signal line and try again and make sure that the signal line is firmly connected.

- The picture is not in the middle

Solution: Please adjust the clock or press the shortcut key AUTO to adjust.

- No input signal

Solution: Please check whether the interface connected by the signal line is consistent with the channel of the monitor.

Please notice - All products are subject to change without any notice. We take reservations for errors and omissions in the manual.

ALL RIGHTS RESERVED, COPYRIGHT DENVER A/S



denver.eu



Electric and electronic equipment contains materials, components and substances that can be hazardous to your health and the environment, if the waste material (discarded electric and electronic equipment) is not handled correctly.

Electric and electronic equipment is marked with the crossed out trash can symbol, seen above. This symbol signifies that electric and electronic equipment should not be disposed of with other household waste, but should be disposed of separately.

All cities have established collection points, where electric and electronic equipment can either be submitted free of charge at recycling stations and other collection sites, or be collected from the households. Additional information is available at the technical department of your city.

DENVER A/S

Omega 5A, Soeften

DK-8382 Hinnerup

Denmark

www.facebook.com/denver.eu

