

Rechargeable LED Work Light

Item no: 2522106

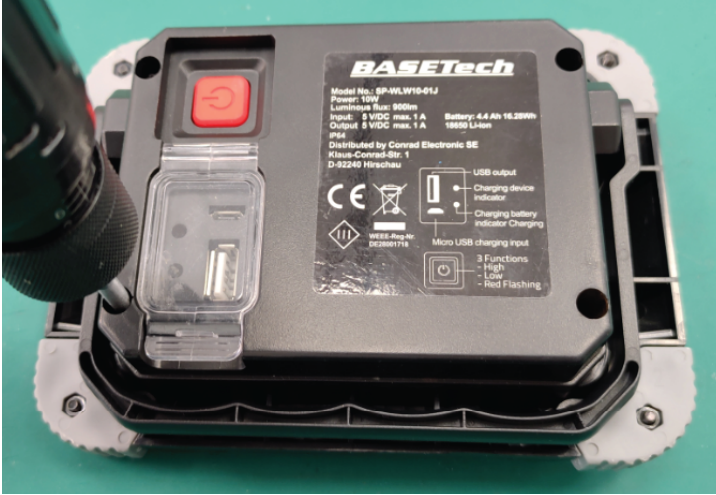
1 Dismantling recommendations

- Disconnect from power supply.
- Ask help from a professional if needed.

2 Dismantling instructions

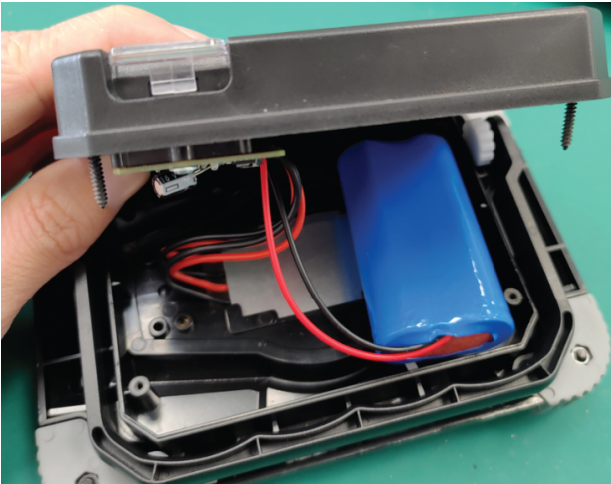
Step 1

Remove 4x screws.



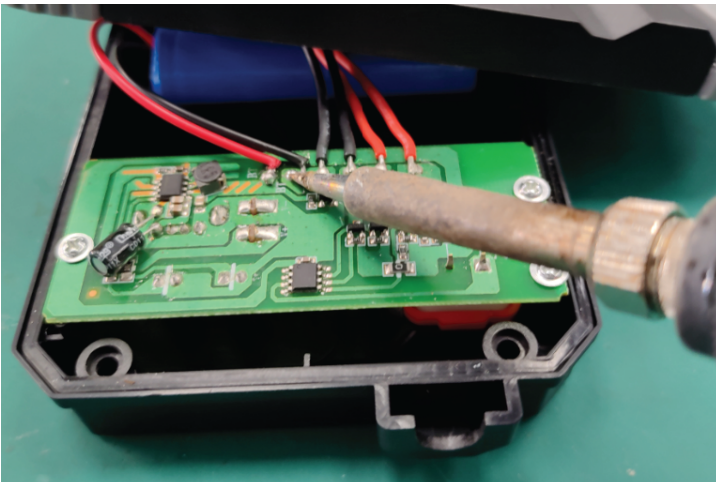
Step 2

Open the back shell.



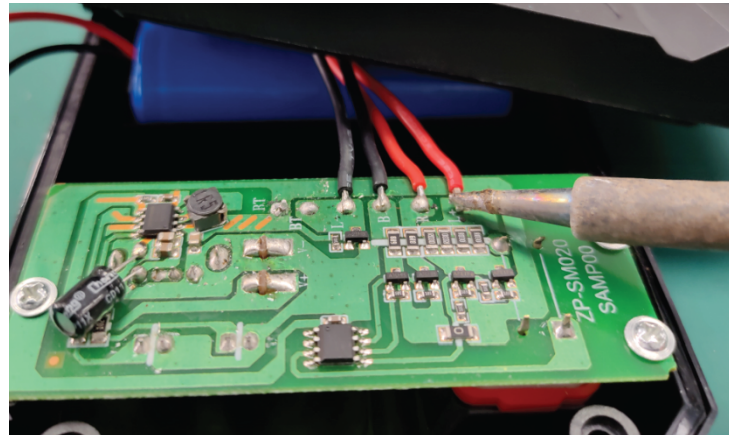
Step 3

Desolder the cables from the battery.



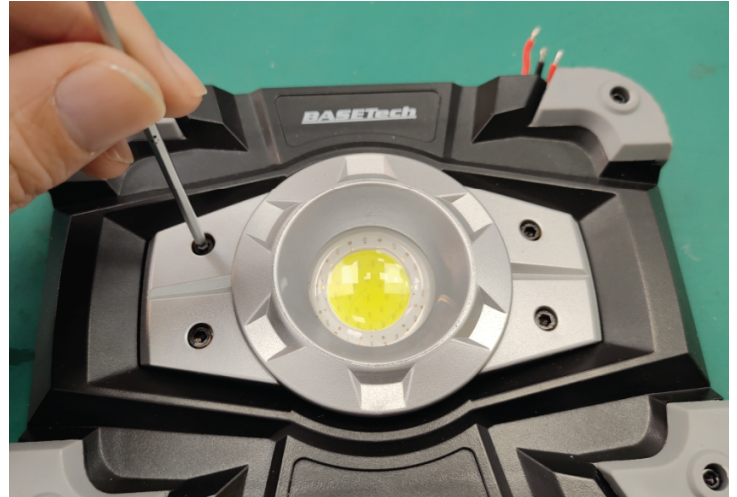
Step 4

Desolder the cables from the PCB board.



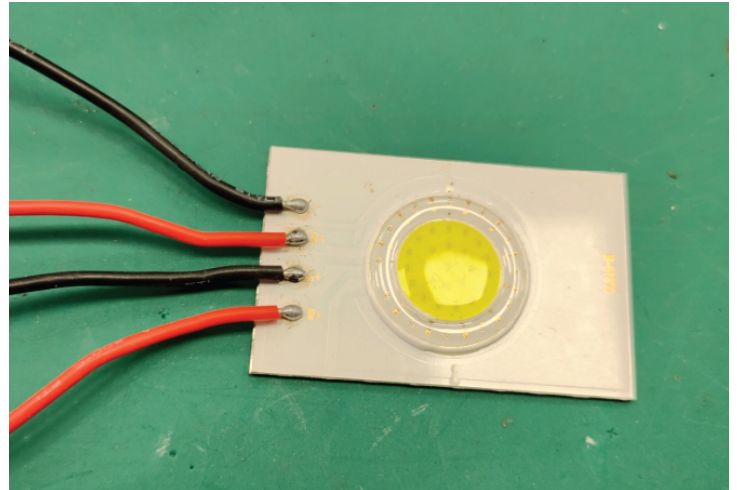
Step 5

Remove the screws in the silver part.



Step 6

Take out the COB and PCB board.



This is a publication by Conrad Electronic SE, Klaus-Conrad-Str. 1, D-92240 Hirschau (www.conrad.com).
All rights including translation reserved. Reproduction by any method (e.g. photocopying, microfilming or the capture in electronic data processing systems) requires prior written approval from the editor. Reprinting, also in part, is prohibited.
This publication reflects the technical status at the time of printing.
Copyright by Conrad Electronic SE.
*2522106_V1_0622_hs_en 569276043 11/01 en