

Data Sheet

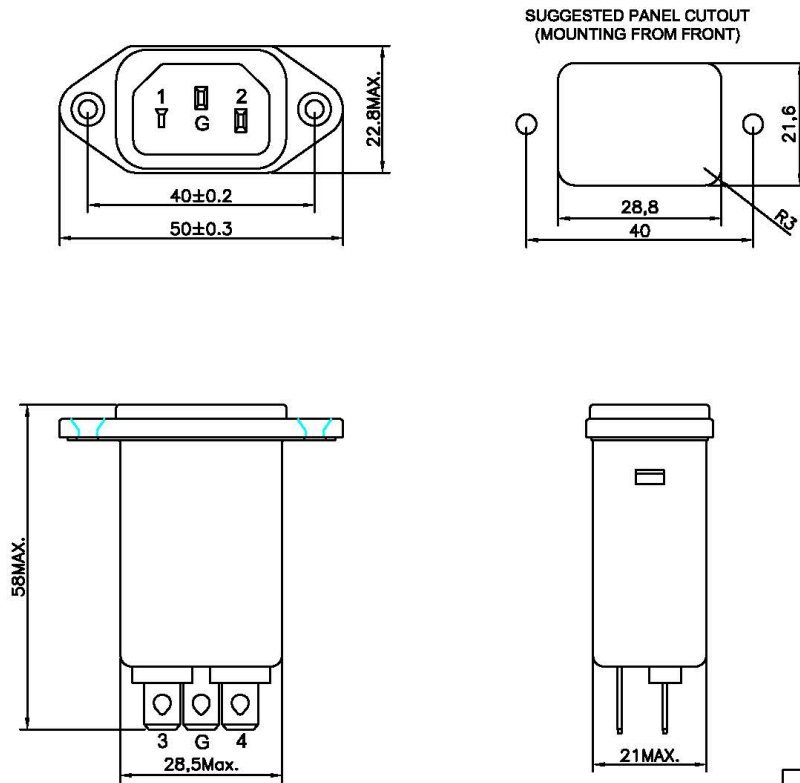
SPECIFICATION FOR APPROVAL

1/3

Name:	EMI FILTER	Part No.:	
YBX MODEL:	YB11A1-6A-Q	Customer P/N :	CP000196

1. PART NUMBER: YB11A1-6A-Q

2. PHYSICAL DIMENSIONS:



0 ~ 10	± 0.3
10 ~ 100	± 0.5
100 ~ 150	± 0.8
150 ~ 200	± 1.0

Dimension Limit	Tolerance
0 ~ 10	± 0.3
10 ~ 100	± 0.5
100 ~ 150	± 0.8
150 ~ 200	± 1.0

Drawing by	Checked by	Approved by	Ordering No.	Unit	Rev.	Dimension Limit	Tolerance
HZP			YB11A1-6A-Q	mm	2.0		
						2017-03-21	

Data Sheet

SPECIFICATION FOR APPROVAL

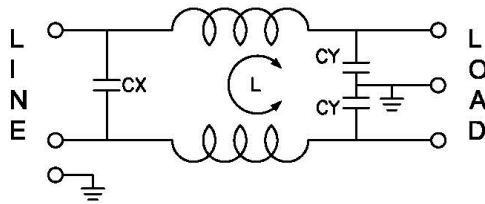
2/3

Name:	EMI FILTER	Part No.:	
YBX MODEL:	YB11A1-6A-Q	Customer P/N :	CP000196

3. CHARACTERISTICS:

- (1) VOLTAGE RATING.....115/250VAC
- (2) CURRENT RATING:
 - A. @ 115VAC.....6A RMS Max.
 - B. @ 250VAC.....6A RMS Max.
- (3) OPERATING FREQUENCY: 50/60Hz
- (4) LEAKAGE CURRENT: EACH LINE TO GROUND
 - A. @ 115VAC/60Hz.....0.4mA Max.
 - B. @ 250VAC/50Hz.....0.8mA Max.
- (5) HIPOT RATING(FOR 2S)
 - A. LINE TO GROUND.....2250VDC
 - B. LINE TO LINE.....1450VDC
- (6) IR: 50M ohm AT 500VDC ANY INPUT OR OUTPUT TO GROUND
- (7) TEMPERATURE RANGE: -25°C~+85°C

4. ELECTRICAL SCHEMATIC:



L:2x0.8mH
Cx:0.1uF(X2)
Cy:3300pF(Y2)

5. SAFETY COMPLIANCE:

UL :E471748
TUV : B0899310001
CQC :CQC14001104342

Drawing by	Checked by	Approved by	Ordering No.	Unit	Rev.	2.0
HZP			YB11A1-6A-Q	mm	2017-03-21	

Data Sheet

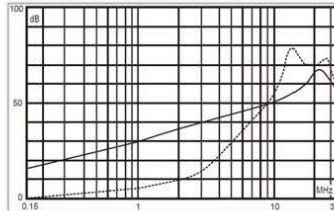
SPECIFICATION FOR APPROVAL

3/3

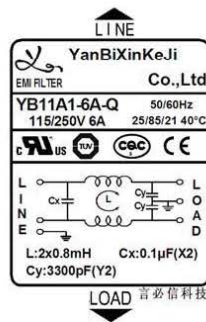
Name:	EMI FILTER	Part No.:	
YBX MODEL:	YB11A1-6A-Q	Customer P/N :	CP000196

6. INSERTION LOSS:

————— 共模(common mode)
 - - - - - 差模(differential mode)



7.Label:



<i>Drawing by</i>	<i>Checked by</i>	<i>Approved by</i>	<i>Ordering No.</i>	<i>Unit</i>	<i>Rev.</i>	2.0
HZP			YB11A1-6A-Q	mm	2017-03-21	