

# Data Sheet

## SPECIFICATION FOR APPROVAL

2/2

Name:	EMI FILTER	Part No.:	RD1907044
YBX MODEL:	YB11P5-6A-S	Customer P/N :	

### 3. CHARACTERISTICS:

(1) VOLTAGE RATING.....115/250VAC

#### (2) CURRENT RATING:

A. @ 115VAC.....6A RMS Max.

B. @ 250VAC.....6A RMS Max.

(3) OPERATING FREQUENCY: 50/60Hz

#### (4) LEAKAGE CURRENT: EACH LINE TO GROUND

A. @ 115VAC/60Hz.....0.4mA Max.

B. @ 250VAC/50Hz.....0.8mA Max.

#### (5) HIPOT RATING(FOR ONE MINUTE)

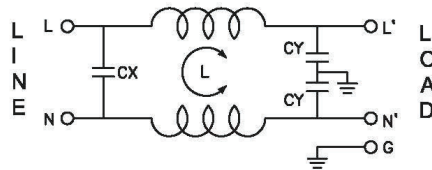
A. LINE TO GROUND.....2250VDC

B. LINE TO LINE.....1450VDC

(6) IR: 50M ohm AT 500VDC ANY INPUT OR OUTPUT TO GROUND

(7) TEMPERATURE RANGE: -25°C~+85°C

### 4. ELECTRICAL SCHEMATIC:



L:2x2.0mH  
Cx:0.1uF(X2)  
Cy:3300pF(Y2)

### 5. SAFETY COMPLIANCE:

TUV : B0899310001

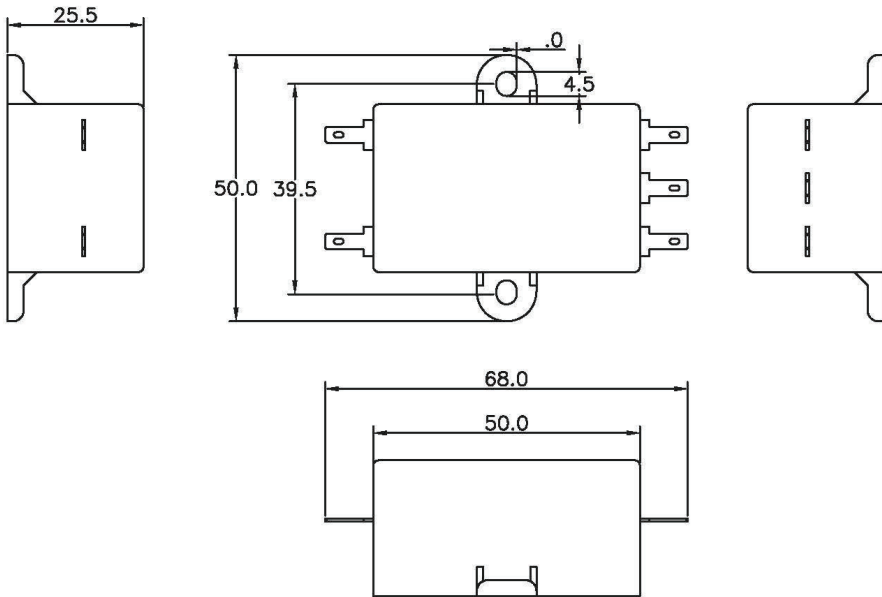


6.Label: NO

Drawing by	Checked by	Approved by	Ordering No.	Unit	Rev.
			YB11P5-6A-S	mm	
					<b>2019-07-09</b>

# Data Sheet

## SPECIFICATION FOR APPROVAL

1/2

Name:	EMI FILTER	Part No.:	RD1907044								
YBX MODEL:	YB11P5-6A-S	Customer P/N :									
<p>1. PART NUMBER: YB11P5-6A-S</p> <p>2. PHYSICAL DIMENSIONS:</p>  <table border="1" data-bbox="1128 1514 1369 1619"> <tr> <td>0 ~ 10</td> <td>±0.3</td> </tr> <tr> <td>10 ~ 100</td> <td>±0.5</td> </tr> <tr> <td>100 ~ 150</td> <td>±0.8</td> </tr> <tr> <td>150 ~ 200</td> <td>±1.0</td> </tr> </table>				0 ~ 10	±0.3	10 ~ 100	±0.5	100 ~ 150	±0.8	150 ~ 200	±1.0
0 ~ 10	±0.3										
10 ~ 100	±0.5										
100 ~ 150	±0.8										
150 ~ 200	±1.0										
<i>Drawing by</i>	<i>Checked by</i>	<i>Approved by</i>	<i>Ordering No.</i>	<i>Unit</i>	<i>Rev.</i>	<i>Dimension Limit</i>	<i>Tolerance</i>				
			YB11P5-6A-S	mm	<b>2019-07-09</b>						