

# Data Sheet

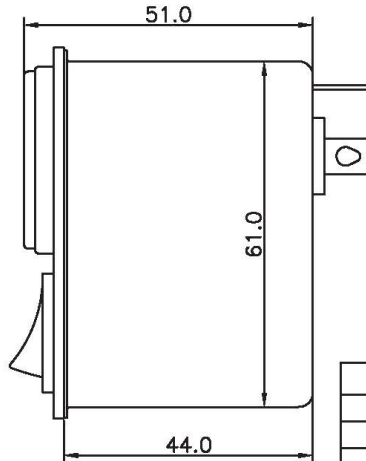
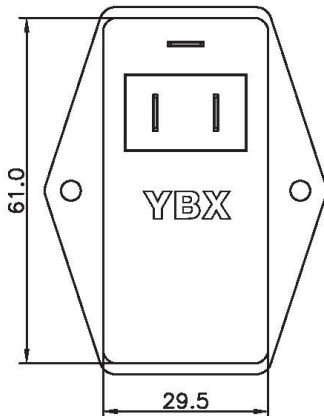
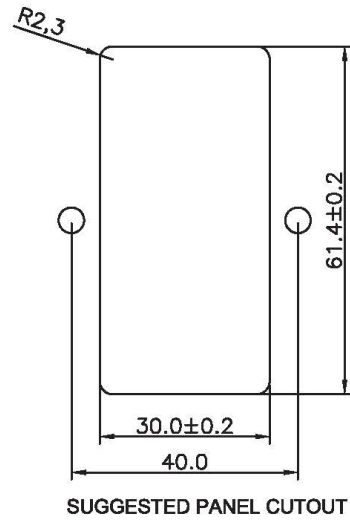
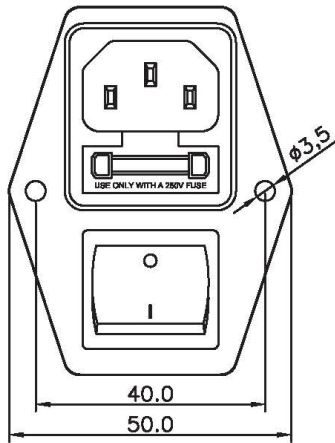
## SPECIFICATION FOR APPROVAL

1/2

Name:	EMI FILTER	Part No.:	
YBX MODEL:	YB11C2-6A-Q	Customer P/N :	CP000581

1. PART NUMBER: YB11C2-6A-Q

2. PHYSICAL DIMENSIONS:



0 ~ 10	±0.3
10 ~ 100	±0.5
100 ~ 150	±0.8
150 ~ 200	±1.0

Drawing by	Checked by	Approved by	Ordering No.	Unit	Rev.	Dimension Limit	Tolerance
HZP			YB11C2-6A-Q	mm	2.0		
<b>2016-11-30</b>							

# Data Sheet

## SPECIFICATION FOR APPROVAL

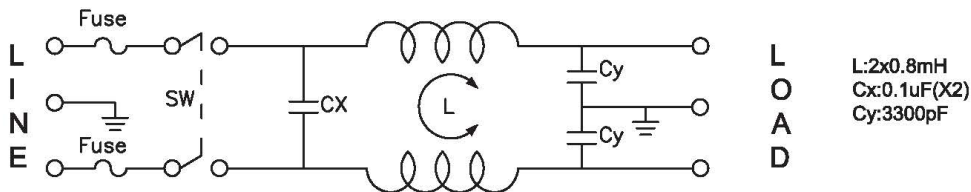
2/2

Name:	EMI FILTER	Part No.:	
YBX MODEL:	YB11C2-6A-Q	Customer P/N :	CP000581

### 3. CHARACTERISTICS:

- (1) VOLTAGE RATING.....115/250VAC
- (2) CURRENT RATING:
  - A. @ 115VAC..... 6A RMS Max.
  - B. @ 250VAC..... 6A RMS Max.
- (3) OPERATING FREQUENCY: 50/60Hz
- (4) LEAKAGE CURRENT: EACH LINE TO GROUND
  - A. @ 115VAC/60Hz.....0.4mA Max.
  - B. @ 250VAC/50Hz.....0.8mA Max.
- (5) HIPOT RATING(FOR ONE MINUTE)
  - A. LINE TO GROUND.....2250VDC
  - B. LINE TO LINE.....1450VDC
- (6) IR: 50M ohm AT 500VDC ANY INPUT OR OUTPUT TO GROUND
- (7) TEMPERATURE RANGE: -25°C~+85°C

### 4. ELECTRICAL SCHEMATIC:



### 5. SAFETY COMPLIANCE:

UL :E471748  
 CQC :CQC14001104342  
 TUV : B0899310001

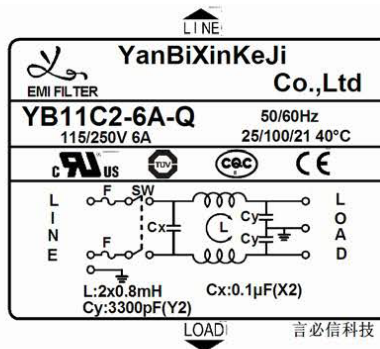
Drawing by	Checked by	Approved by	Ordering No.	Unit	Rev.	2.0
HZP		Roy	YB11C2-6A-Q	mm	<b>2016-11-30</b>	

# Data Sheet

## SPECIFICATION FOR APPROVAL

Name:	EMI FILTER	Part No.:	
YBX MODEL:	YB11C2-6A-Q	Customer P/N :	CP000581

6.Label:



Drawing by	Checked by	Approved by	Ordering No.	Unit	Rev.	2.0
HZP		Roy	YB11C2-6A-Q	mm	<b>2016-11-30</b>	