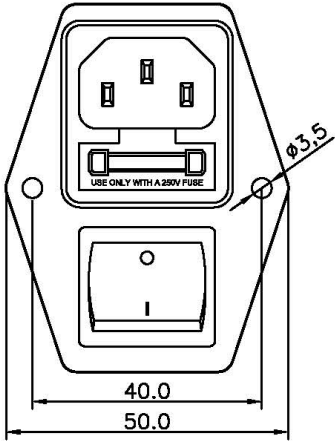
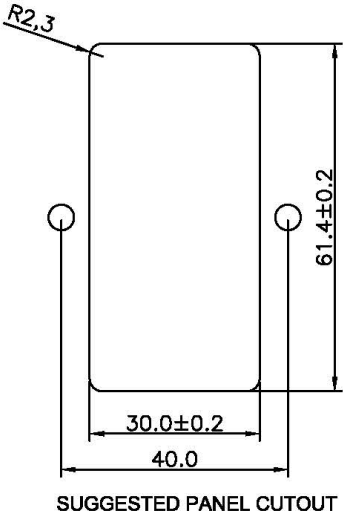
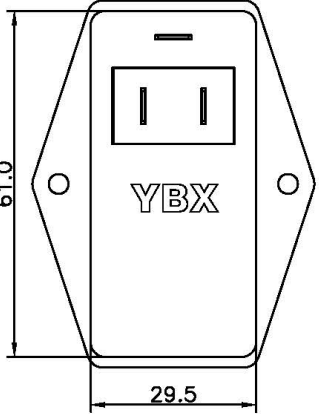
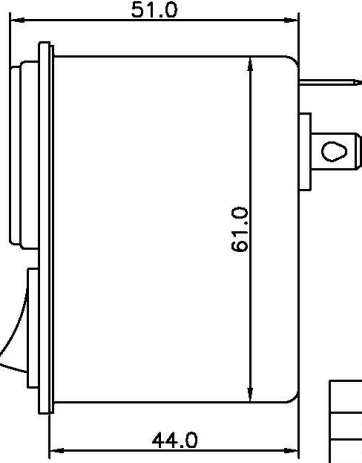



Data Sheet

SPECIFICATION FOR APPROVAL

1/3

Name:	EMI FILTER	Part No.:									
YBX MODEL:	YB11C2-4A-Q(R)	Customer P/N :									
<p>1. PART NUMBER: YB11C2-4A-Q(R)</p> <p>2. PHYSICAL DIMENSIONS:</p>     <table border="1" data-bbox="1136 1617 1401 1729"> <tr> <td>0 ~ 10</td> <td>±0.3</td> </tr> <tr> <td>10 ~ 100</td> <td>±0.5</td> </tr> <tr> <td>100 ~ 150</td> <td>±0.8</td> </tr> <tr> <td>150 ~ 200</td> <td>±1.0</td> </tr> </table>				0 ~ 10	±0.3	10 ~ 100	±0.5	100 ~ 150	±0.8	150 ~ 200	±1.0
0 ~ 10	±0.3										
10 ~ 100	±0.5										
100 ~ 150	±0.8										
150 ~ 200	±1.0										
<i>Drawing by</i>	<i>Checked by</i>	<i>Approved by</i>	<i>Ordering No.</i>								
			YB11C2-4A-Q(R)								
<i>Unit</i>	<i>Rev.</i>	<i>Dimension Limit</i>	<i>Tolerance</i>								
mm	2.0										
2017-11-10											

Data Sheet

SPECIFICATION FOR APPROVAL

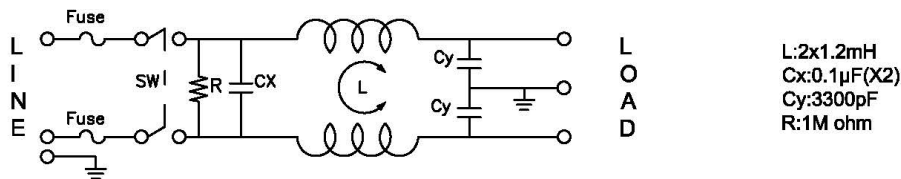
2/3

Name:	EMI FILTER	Part No.:	
YBX MODEL:	YB11C2-4A-Q(R)	Customer P/N :	

3. CHARACTERISTICS:

- (1) VOLTAGE RATING.....115/250VAC
- (2) CURRENT RATING:
 - A. @ 115VAC.....4A RMS Max.
 - B. @ 250VAC..... 4A RMS Max.
- (3) OPERATING FREQUENCY: 50/60Hz
- (4) LEAKAGE CURRENT: EACH LINE TO GROUND
 - A. @ 115VAC/60Hz.....0.4mA Max.
 - B. @ 250VAC/50Hz.....0.8mA Max.
- (5) HIPOT RATING(FOR ONE MINUTE)
 - A. LINE TO GROUND.....2250VDC
 - B. LINE TO LINE.....500VDC
- (6) IR: 50M ohm AT 500VDC ANY INPUT OR OUTPUT TO GROUND
- (7) TEMPERATURE RANGE: -25°C~+85°C

4. ELECTRICAL SCHEMATIC:



5. SAFETY COMPLIANCE:

UL :E471748
 TUV : B0899310001
 CQC :CQC14001104342

Drawing by	Checked by	Approved by	Ordering No.	Unit	Rev.	2.0
			YB11C2-4A-Q(R)	mm	2017-11-10	

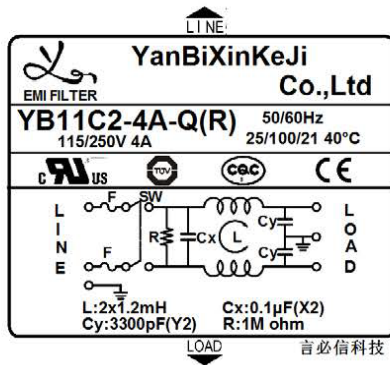
Data Sheet

SPECIFICATION FOR APPROVAL

3/3

Name:	EMI FILTER	Part No.:	
YBX MODEL:	YB11C2-4A-Q(R)	Customer P/N :	

6.Label:



Drawing by	Checked by	Approved by	Ordering No.	Unit	Rev.	2.0
<div style="border: 2px solid red; border-radius: 50%; padding: 5px; display: inline-block;"> 工程部 2017.11.10 王官九 </div>			YB11C2-4A-Q(R)	mm	2017-11-10	