

# SUPER252

1/43 USB POWER SLOT CAR RACING SET


## INSTRUCTION MANUAL



### REQUIREMENT:

- TRANSFORMER WITH USB PORT, INPUT: 100-240V ~ 50/60Hz 0.5A MAX OUTPUT: 5V = 2A (NOT INCLUDED)
- OR
- POWER BANK OUTPUT DC 5V = 2A, Maximum 5000mAh.(NOT INCLUDED)

### WARNING:

1. Track have functional sharp edges.
2. Not suitable for children under 3 years old because small parts can be swallowed.
3. The paper, rubber band and polybag are packaging material purpose, which are not part of the toy and should be discarded properly for children's safety concern.
4. This toy contains magnets or magnetic components. Magnets which attract another magnet or metallic substance inside the human body could cause serious or even fatal injuries. Seek the advice of a doctor immediately if a magnet is swallowed or inhaled.
5. Keep the track away from delicate objects to avoid damaging them.
6. It is not recommended to set the track up on carpet floors.
7. Don't lock or hold the cars while the engine is on. This may lead to overheating and engine breakdown.
8. Keep all liquids, metal objects, extremely hot or cold source away from the track!
9. Use soft and dry cloth clean the track only. Before cleaning, disconnect power bank or transformer from the toy.
10. Keep clean the braids of slot car.
11. The toy is not to be connected to more than the recommended number of power supplies.
12. The wires are not to be inserted into socket outlet.
13. Non-rechargeable batteries are not to be recharged.
14. The supply terminals are not to be short-circuited.
15. This toy can be connected to power bank(not included), specifications: Output DC 5V = 2A, Maximum 5000mAh.
16. Power bank is not included in this toy. Use only the good quality power bank.
17. Power bank is only to be charged by adults. Power bank should be removed from toy before being charged.
18. The toy should not be operated during charging the power bank.
19. Disconnect the power bank from toy when not in use.
20. Exhausted power bank are to be removed/disconnected from the toy.
21. Toy is not intended for children under 3 years old. The transformer is not a toy. The toy shall only be used with a transformer for toys.
22. This toy can be connected to transformer (not included) with USB port, specifications: Input 100-240V ~ 50/60Hz 0.5A Max, Output DC 5V = 2A.
23. Transformer shall be regularly examined for potential hazard; the toy must not be used until that damage had been properly removed.
24. Toy liable to be cleaned with liquids are to be disconnected from the transformer before cleaning.
25. USB power cable is not a toy. It shall be regularly examined for damage to the supply cord, plug, or other parts, and in the event of damage, it shall not be used until the damage has been repaired.
26. This toy is only to be connected to equipment II bearing the following symbols: 

Please read the manual carefully before assembly and operation!

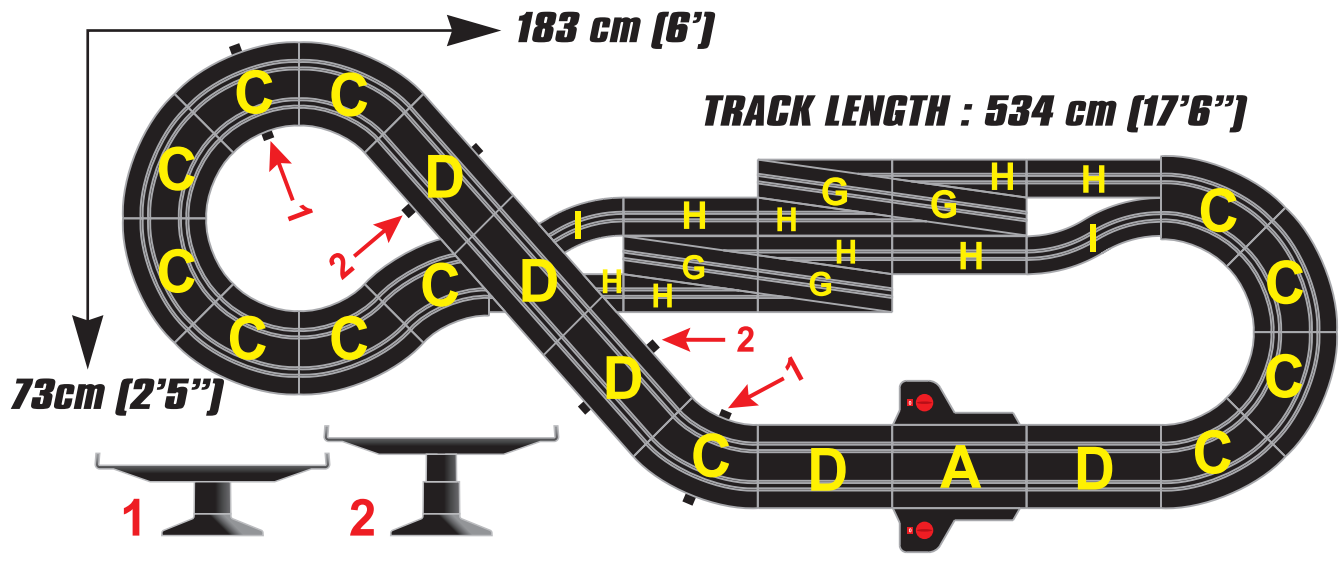
 **WARNING:**  
CHOKING HAZARD--  
Small Parts Not For  
Children Under 3 Years

# CONTENTS OF KIT:



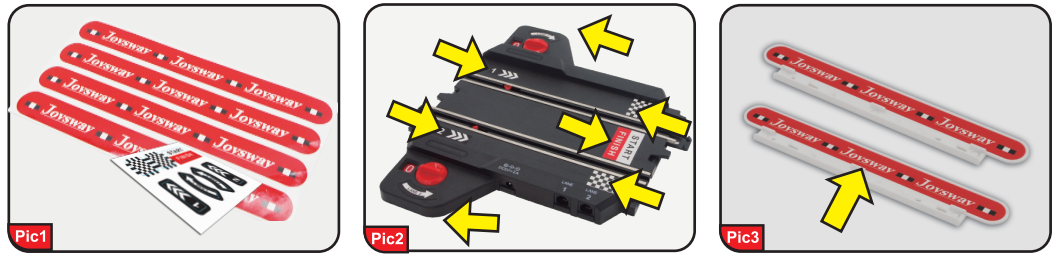
**Remark:** Reference letters shown above are marked on the underside of the track.

# LAYOUT DIAGRAM:

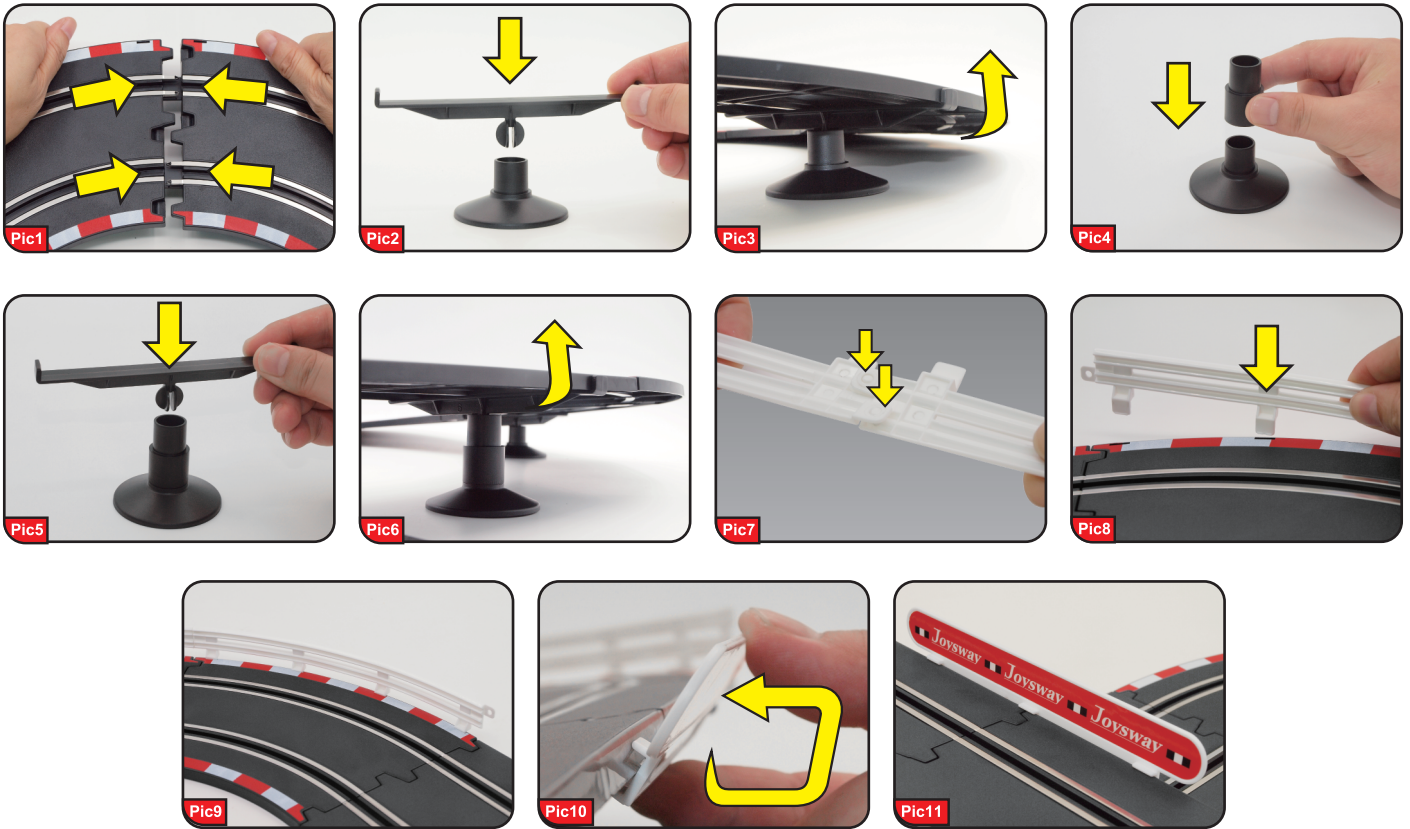


# ASSEMBLY INSTRUCTIONS:

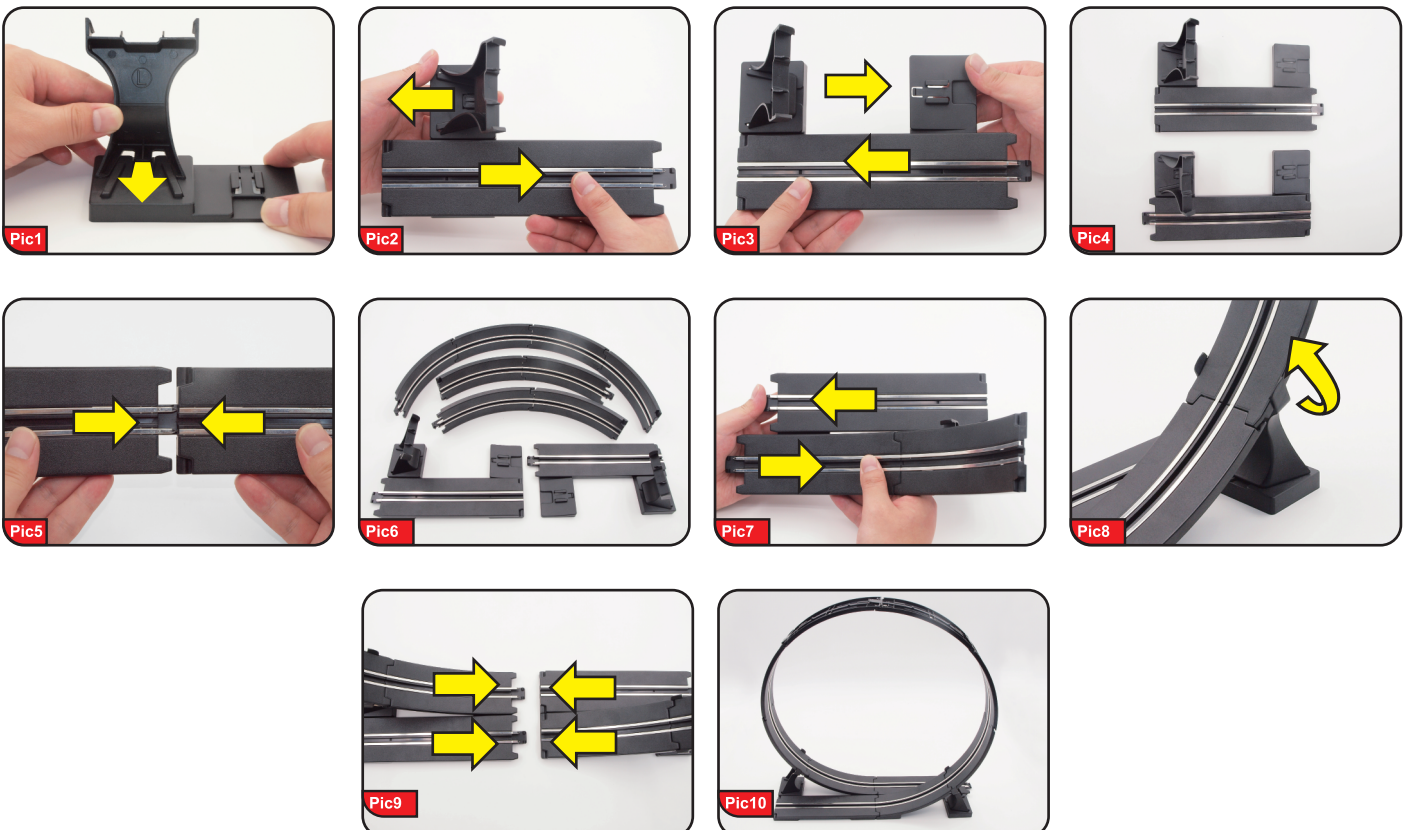
1. Stick the decal on properly position as below pictures.



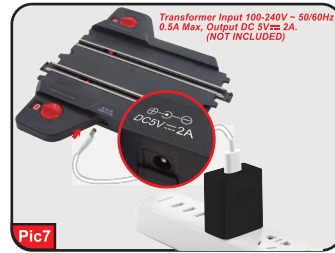
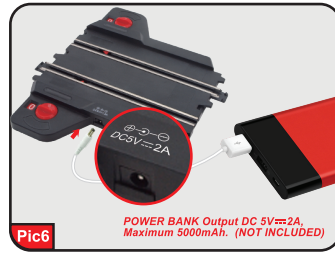
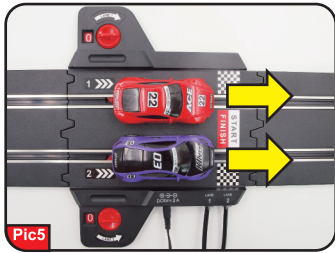
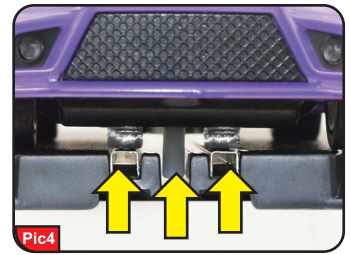
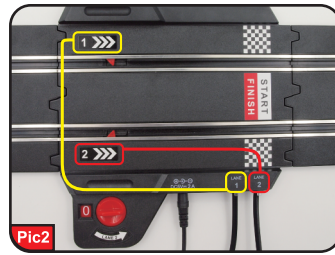
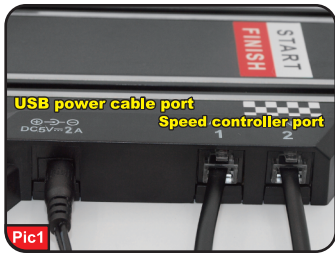
2. Assemble the layout as illustrated. Pic1 for tracks. Pic2,3,4,5,6 for track supports. Pic7,8,9 for guardrails. Pic10,11 for bridge barrier. Reference letters shown on layout diagram are marked on the underside of the track. During the tracks assembly, please note to fit the metal and plastic connector well so that you can assemble easily and avoid damaging the tracks.



### Looping track assembly instructions



3. Plug in the controller and USB power cable DC connector into socket. Lap Counter Lane 1 is related to metal track Lane 1 car, Lane 2 is related to metal track Lane 2 car. See Pic1, Pic2.
4. Adjust the pick-up braids constantly by clean and dry cloth, make sure the pick-up braids and the bottom of car is about 30° as below picture shown. See Pic3.
5. Place the car on track, place the guide pin into track slot and the pick-up braids touch two metal lane on track separately be caution not to cause short-circuit. Meanwhile, position the head of car before Finish line on lap counter, the car will be running as picture arrow shown direction. See Pic4, Pic5.



6. Connect USB power cable with power bank (Not included), Or connect USB power cable with transformer (Not included) with USB port. See Pic6,7. Set racing laps with the red knob on lap counter, Rotate the knob as arrow shown direction to adjust laps from 1 to 10 laps. See Pic8.
7. Speed controller is digital proportional speed control system, hold tightly the trigger to speed up and release trigger to speed down.



**TIPS: 1. Speed down on curve to avoid car derail.  
2. Speed up before looping.**



## MECHANICAL LAP COUNTER SHORT CIRCUIT PROTECT:

Pick-up braids under the car or other metal materials contact with two metal track improperly, which will cause the Short Circuit. Lap counter with short circuit protection to power off the metal track that both cars on lane stop. Adjust braids properly or clear other metal materials that cause metal track short circuit. Ensure short circuit problems solved, place the cars on track properly position to restart car racing.

## RACING NOTICE:

1. If you connect USB power cable with power bank, after long time racing, If notice the racing speed declined obviously, please charge power bank, power bank is only to be charged by adults.
2. Don't tread on track and throw the car.
3. Notice to keep the track dry and clean, you need to clean the track before racing, after racing, please remove the power bank or transformer from the toy. If you don't play slot racing for times, please pack your slot car set back to the gift box prevent it from damaging track and scratching cars.



INSTRUCTION MANUAL AND PACKAGING MUST BE RETAINED SINCE IT CONTAINS IMPORTANT INFORMATION  
 MANUFACTURER: JOYSWAY HOBBY INTERNATIONAL LTD. DONGGUAN GUANGDONG CHINA.  
 CHINA PATENT No.: 201720593704.3 HONG KONG PATENT PENDING

MADE IN CHINA

Subject to technical and design related changes.