

UNIVERSITY CLUB (yacht) INSTRUCTION MANUAL



UNIVERSITY CLUB (yacht) INSTRUCTION MANUAL

ITEM NO. 0305

In order to get the best performance of your yacht, please read carefully this instruction before use.

WARNING

Not suitable for children under 3 years old, small parts can be swallowed.

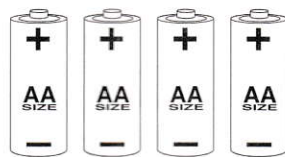
All materials for fastening or packing purposes are not part of the toy and should be discarded for children's safety.

This model is to be operated in water only when fully assembled in accordance with the instruction

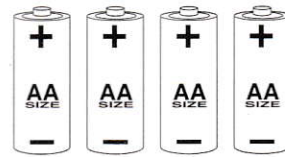
PREPARATION BEFORE USE:

A) Make sure you have the following necessities (Fig.1):

- 1) 4 x "AA" SIZE Alkaline Batteries for transmitter.
- 2) 4 x "AA" SIZE Alkaline Batteries for Yacht.



4 x 1.5V / 4 x "AA" / 4 x LR6



4 x 1.5V / 4 x "AA" / 4 x LR6

①

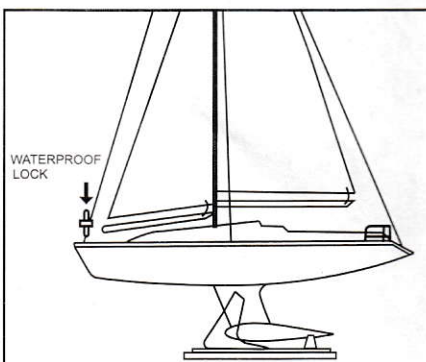
B) Battery Endurance: 20 minutes (approx).

C) Follow step by step from figure 2 to figure 7.

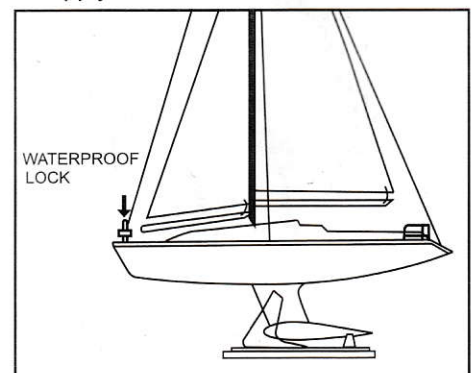
IMPORTANT NOTE:

Non-rechargeable batteries are not to be recharged.
Rechargeable batteries are to be removed from the toy before being charged.
Rechargeable batteries are only to be charged under adult supervision.
Different types or new and used batteries are not mixed.

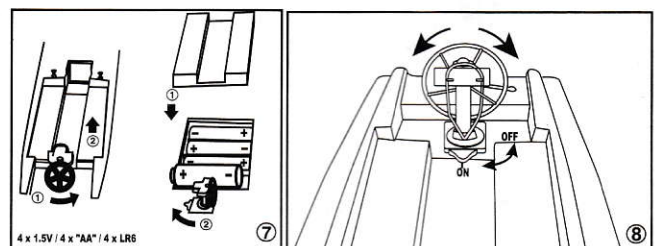
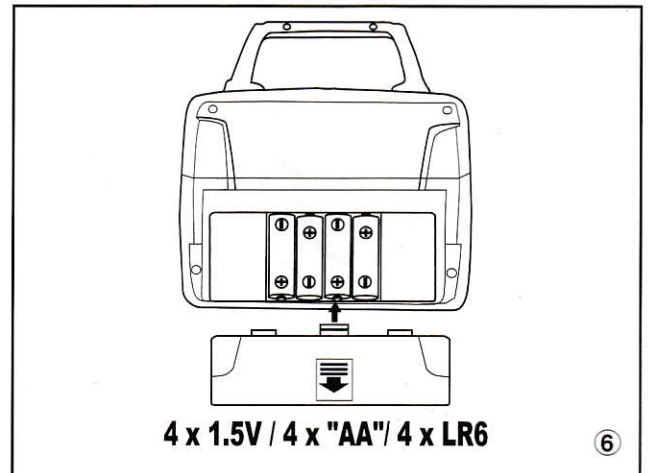
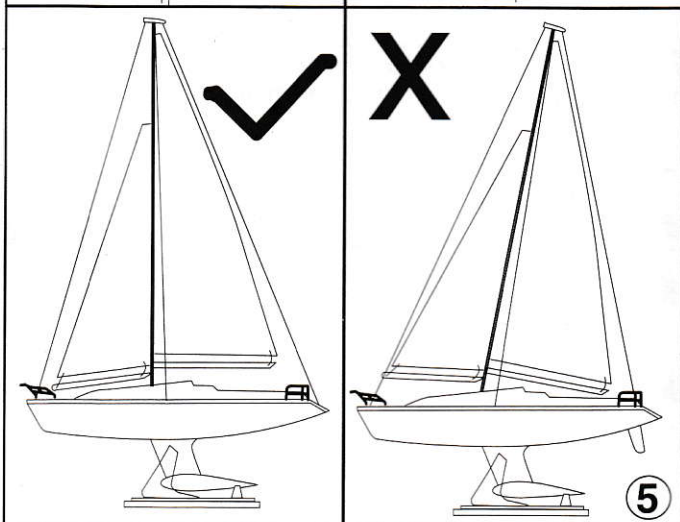
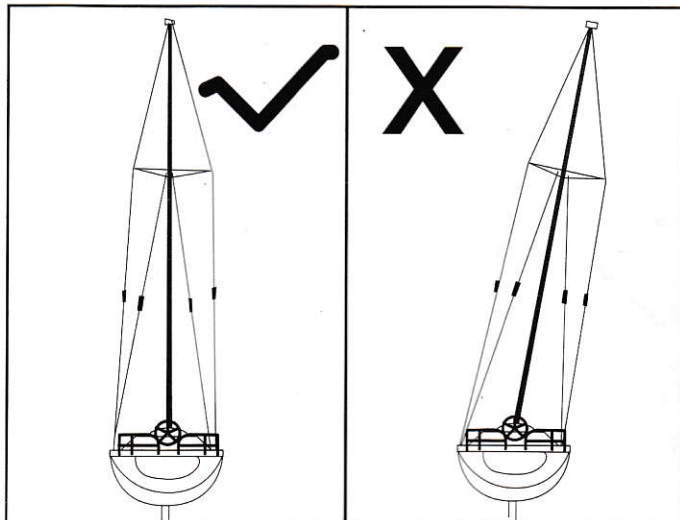
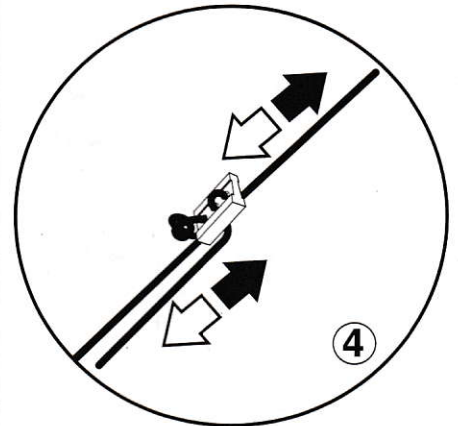
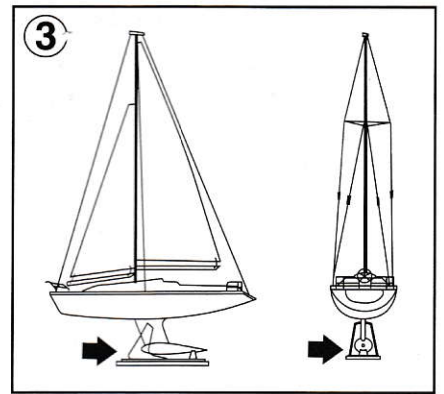
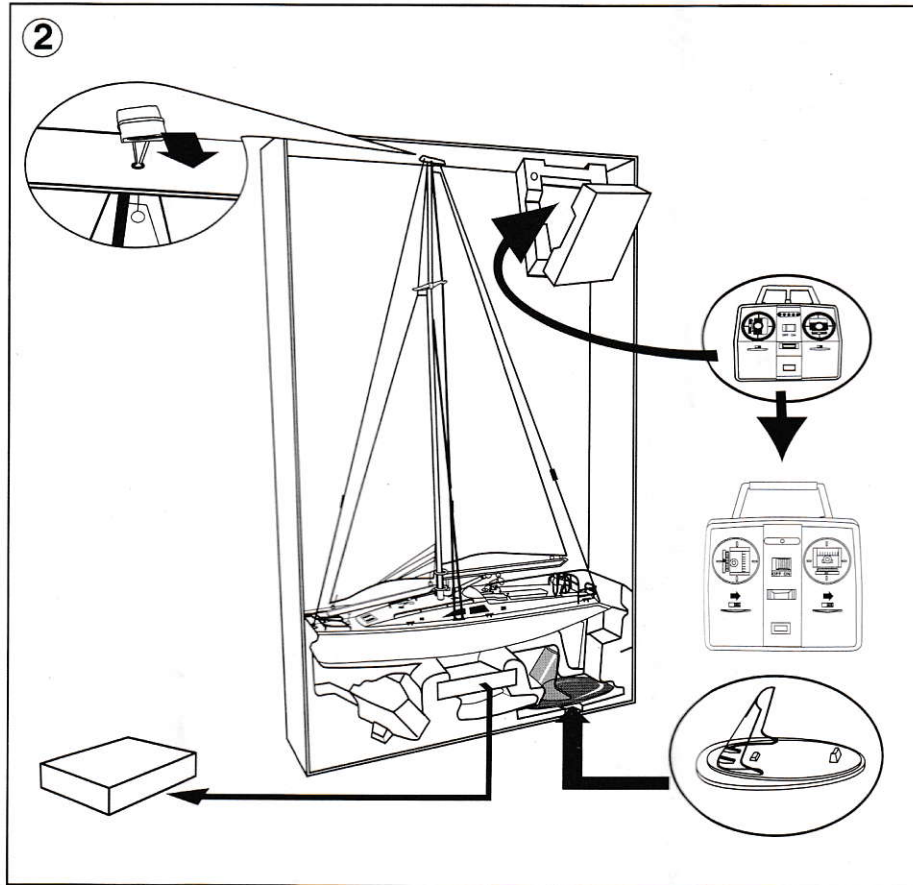
Only batteries of the same or equivalent type as recommended are used.
Batteries are inserted with correct polarity.
Exhausted batteries are to be removed from the toy.
The supply terminals are not to be shorted-circuit.



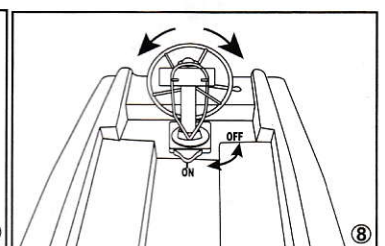
AFTER RELEASING WATER FROM THE BOAT, PUTTING BACK THE WATERPROOF LOCK IN THE HOLE FOR PREVENTING WATER COMING INSIDE THE BOAT. IN CASE OF TOO MUCH WATER INSIDE THE BOAT, IT WILL BE NOT WORKING.



MAKING SURE THE WATERPROOF LOCK PLACED IN THE HOLE, BEFORE PUT IN WATER, THIS ACTION IS FOR PREVENTING WATER COMING INSIDE THE BOAT.



Put on the battery compartment cover and rotate the Switch to "on"

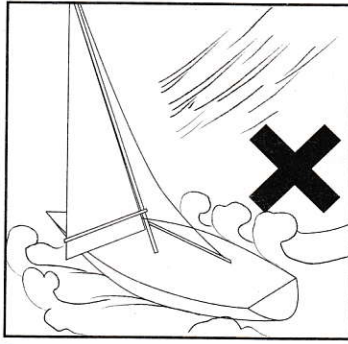


CAUTIONS FOR SAFETY

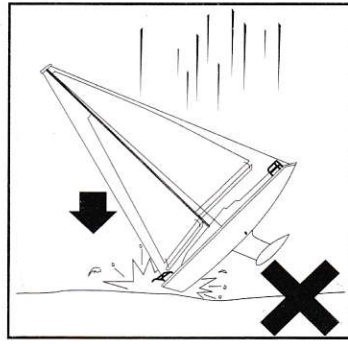
Do not sail the yacht beyond 400feet/120 meters from yourself.
Do not operate this yacht in sea water for best performance.

Note:

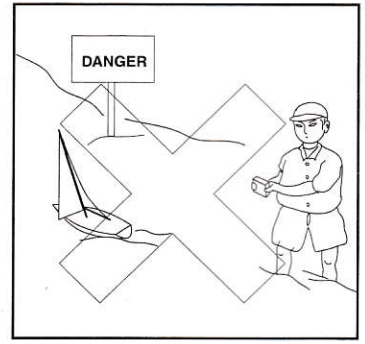
- 1) Make sure the water surface within control range is clear of plant, rubbish ... etc. Otherwise they may jam the propeller and cause damage to the internal parts.
- 2) Do not run out of the 120 meters maximum control range. Otherwise the boat may lose control and runaway.
- 3) To prevent a runaway R/C Mode switch on the transmitter before connecting a battery to a R/C model receiver. Always switch on the power of the transmitter first and then switch on the receiver.
- 4) To avoid a runaway R/C model, always switch off the boat and disconnect the battery before switching off the transmitter.



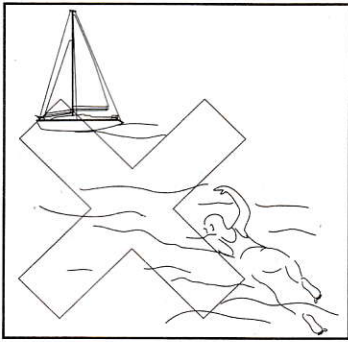
Do not operate this product under windy and stormy weather.



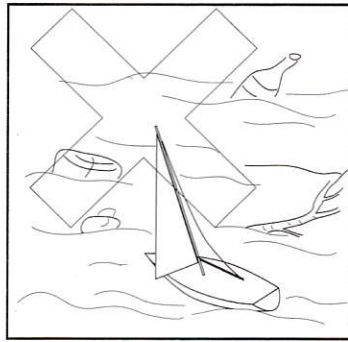
Do not drop this product onto the ground.



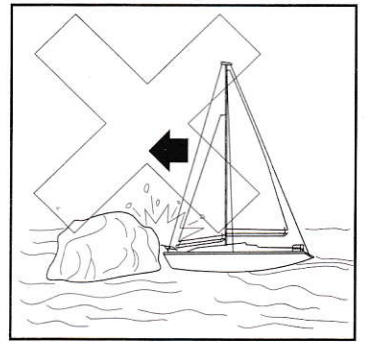
Do not operate this product in prohibited area.



Never swim to retrieve your yacht.



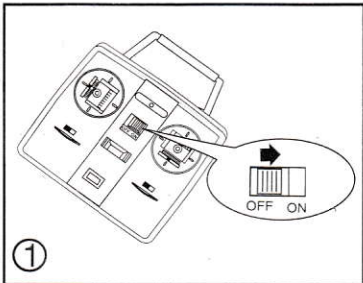
Do not sail your yacht in dirty and jammed water.



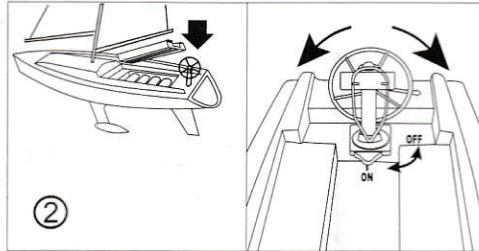
Do not try to crash your yacht to any object in the water.

BE READY FOR SAILING

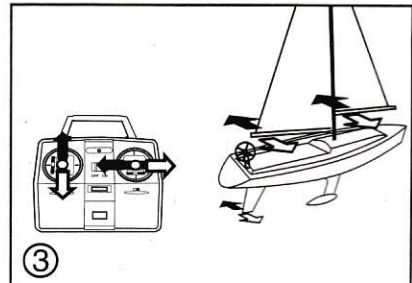
In order to avoid radio interferences to your product, before sailing, ask your vicinity to see if they are running the same frequency as yours.



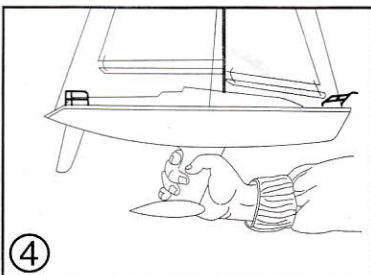
① Make sure the transmitter controls and trims are in neutral. Fully extend the transmitter antenna and switch on transmitter.



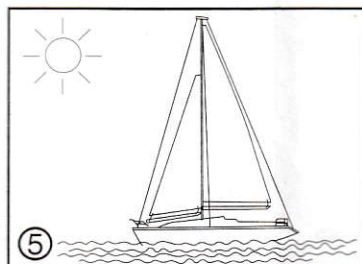
② Put on the battery compartment cover and rotate the Switch to "on"



③ Check the rudder and the sails turn as per transmitter input.



④ Correct method to hold your yacht.



⑤ Ideal weather for sailing:
Sunny with mild wind over the water.

POSITION OF THE SAILS UNDER 360° WIND

Relationship of Wind and Hull

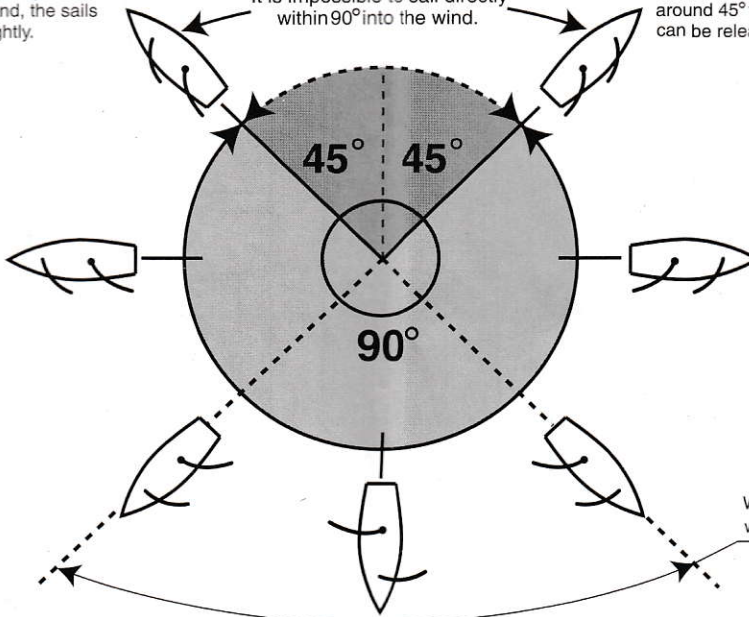


When the yacht is sailing at around 45° to the wind, the sails can be released slightly.

It is impossible to sail directly within 90° into the wind.

When the yacht is sailing at around 45° to the wind, the sails can be released slightly.

When the wind is abeam of the yacht (90°), you have to control the sails at 45° of the yacht.



When the wind is abeam of the yacht (90°), you have to control the sails at 45° of the yacht.

When the yacht is sailing under tailwind within 90°, you can open the sail fully.

CONTROL INSTRUCTION FOR A TYPICAL VOYAGE

When the yacht reaches the position B and gains certain speed, then turns left, makes the yacht pointing towards C, controls the sails at 45° to the body of yacht.

Direction of wind



Keep sailing in that direction.

When the yacht reaches the position C and gains certain speed, then turns left. Makes the yacht sailing at 45° towards the wind and close slightly the sails position.

Keep sailing in that direction.

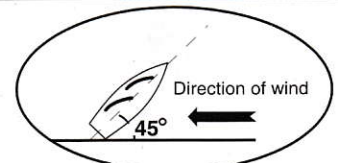
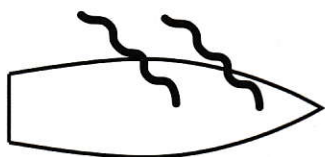
When the yacht gains certain speed, then turns left, makes the yacht pointing 45° opposite to the direction of the wind.

When the yacht reaches the position A and gains certain speed, then turns left, makes the yacht pointing towards B, controls the sails at 45° to the body of yacht.

When the yacht gains certain speed, then turns right, makes the yacht pointing 45° opposite to the direction of the wind.

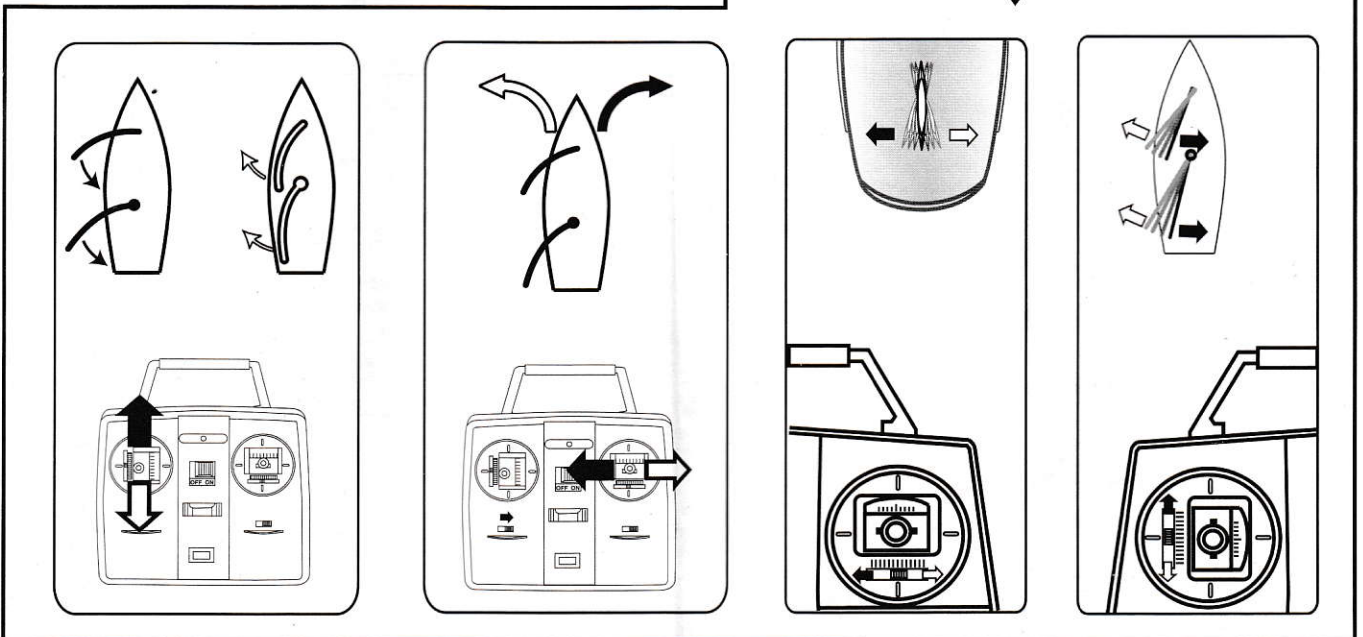
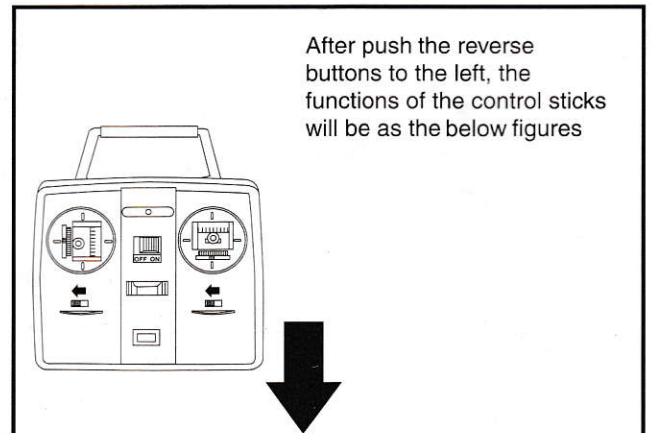
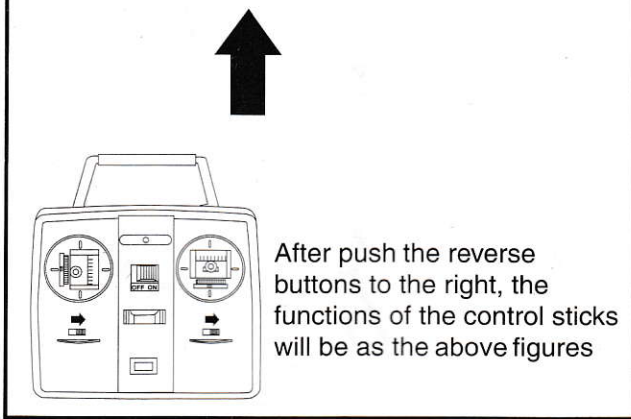
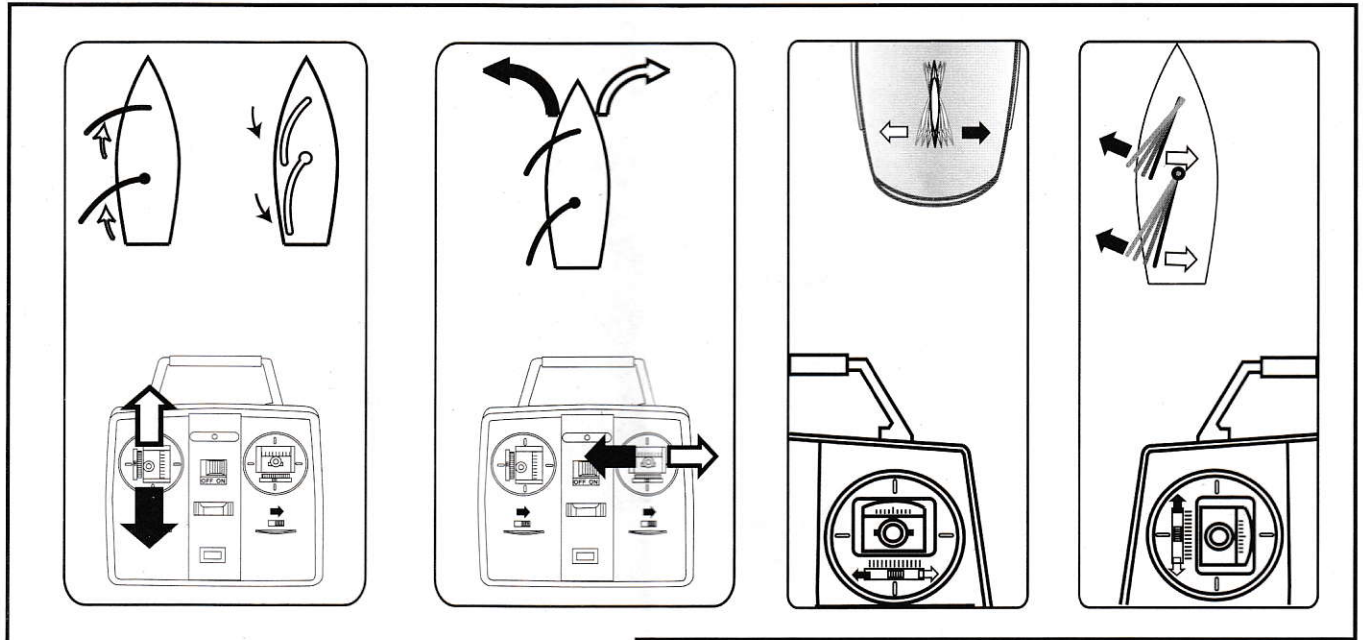
When the yacht gets certain speed, then turns right, makes it sailing at 45° against the direction of wind.

Release the sail slightly, put your yacht at around 45° opposite to the direction of the wind and towards the direction of A.



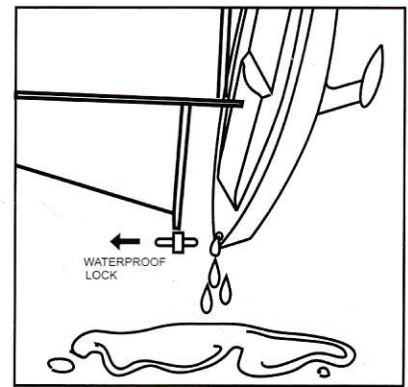
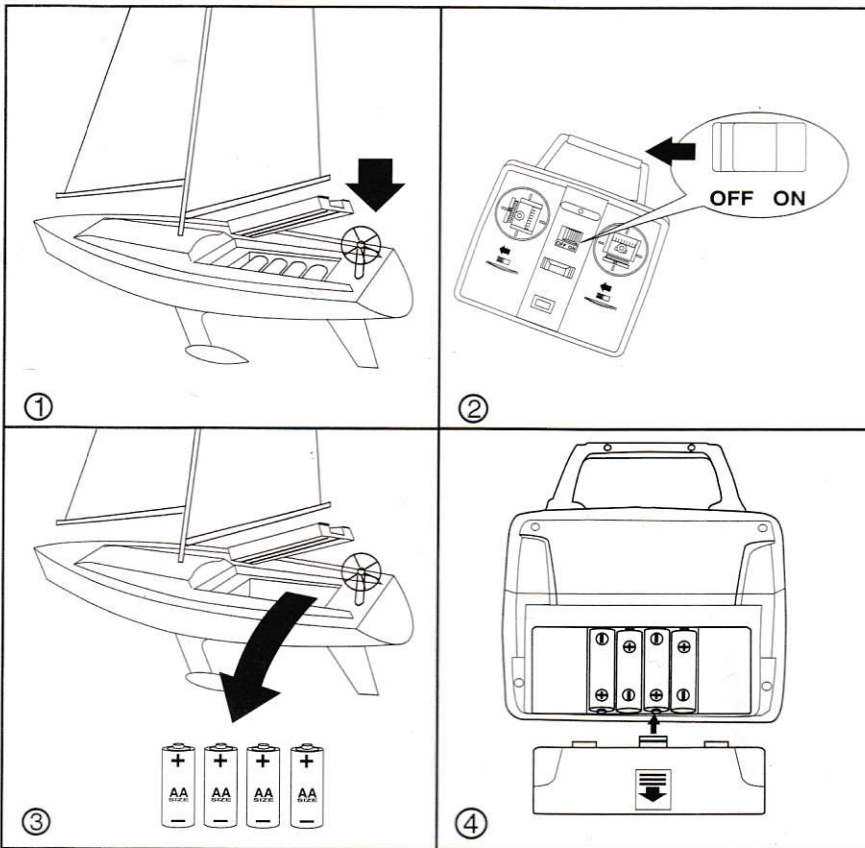
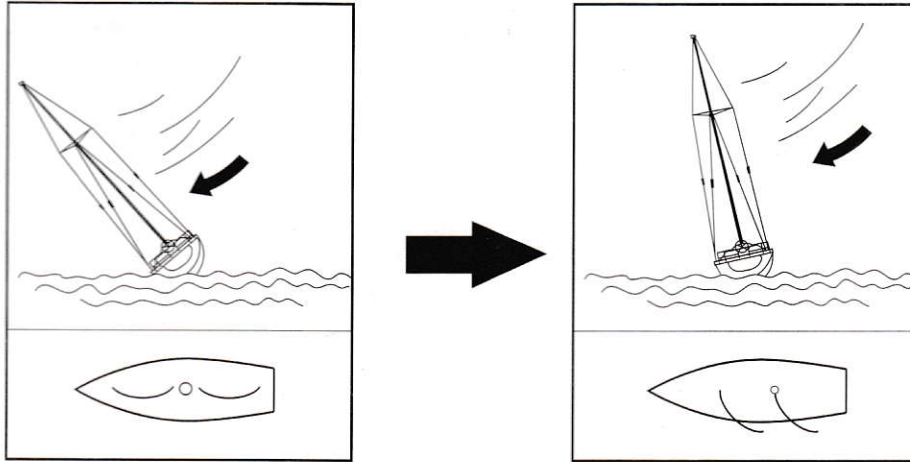
Important note: If the sails cannot catch the wind, the yacht will not move, then you have to close the sails.

CONTROL INSTRUCTION FOR A VOYAGE

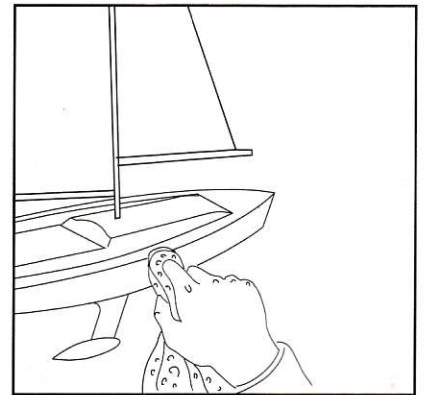


IMPORTANT NOTES:

You cannot change the direction of the rudder if the yacht does not move in the water.



PULLING THE WATERPROOF LOCK AND RELEASING WATER FROM THE HOLE, WHEN FINDING OUT WATER INSIDE THE BOAT.



Wipe the hull and battery compartment dry.

After sailing, switch off the receiver on the yacht and then switch off the transmitter. Take out all the batteries from the transmitter and receiver, use a dry, clean cloth to wipe dry the battery compartment and its conductors.

FCC Note:

The manufacturer is not responsible for any radio or TV interference caused by unauthorized modifications to this equipment. Such modifications could void the user's authority to operate the equipment.

IF YOU FIND ANY FUNCTIONAL PROBLEMS IN OPERATING THIS TOY, PLEASE READ CAREFULLY THE INSTRUCTION SHEETS AND/OR E-MAIL US AT THE FOLLOWING ADDRESS:

info@hobbyengine.com.hk





E-MAIL ADDRESS: info@hobbyengine.com.hk