



ENJOYMENT THAT STAYS WITH YOU

YDP-145 | YDP-S35

ARIUS

ENJOYMENT THAT STAYS WITH YOU



The luxurious tone and expressive ease of playing stays true to the basics of an acoustic piano. It almost plays itself, resonating with the sound of music you feel within. Start your day with music and a huge smile on your face — the ARIUS piano creates an urge to continue playing.

HIGHLIGHTS

- Graded Hammer Standard (GHS) keyboard with 88 keys and matte black keys
- Meticulously sampled from Yamaha's flagship CFX grand piano
- 10 voices
- 192-note polyphony
- New Virtual Resonance Modeling Lite (VRM Lite)
- 2-track recording (1 Song)
- 50 Classic Preset Songs, 303 Lesson Songs
- Dual function; Duo mode
- Stereophonic Optimizer, Intelligent Acoustic Control
- USB to HOST terminal
- Headphones x 2
- Amplifiers: 8 W x 2
- Speakers: 12 cm x 2
- Sliding Key Cover (YDP-145) / Folding Key Cover (YDP-S35)



YDP-145



YDP-S35



ARIUS

POWERFUL SOUND & AUTHENTIC ACOUSTIC PIANO PLAYABILITY

CFX GRAND PIANO

The new ARIUS models all feature a piano Voice sampled from Yamaha's flagship CFX concert grand piano — a renowned piano that delivers sparkling highs and a powerful resonant bass combined in a superbly expressive sound.

All ARIUS models have the same detailed sound — from the lower keys to the higher keys — full of clarity and rich in colorful harmonic content. It gives you extraordinary expressive power and nuance, that authentically resonates in your daily practice as well as your most emotion-filled performances.



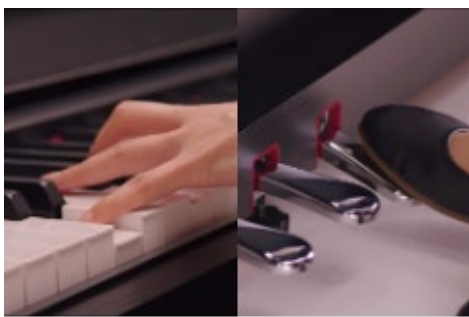
FEEL

With an 88-key piano action, the GHS (Graded Hammer Standard) **reproduces the touch of an acoustic piano**, from a naturally heavy feel in the lower keys to a lighter touch in the upper octaves. Moreover, there's a half-damper feature that authentically replicates the damper action of a grand piano, providing rich expressive variation.

One of the allures of the grand piano is the **sympathetic resonance** created by the vibration of the entire instrument. All ARIUS models elaborately reproduce this rich sympathetic resonance through a groundbreaking technology called **Virtual Resonance Modeling Lite (VRM Lite)**. VRM Lite creates a richly varied sound by simulating the complex sympathetic tones created when the vibrations of the strings are propagated to the soundboard and other strings, corresponding to the timing and intensity of key playing and pedaling.

TONE ESCAPEMENT

The YDP-145 uses a newly developed tone escapement construction on the back of the cabinet that emanates sound from inside the piano. This allows you to experience the natural sound radiation and three-dimensional resonance akin to that of an acoustic piano.



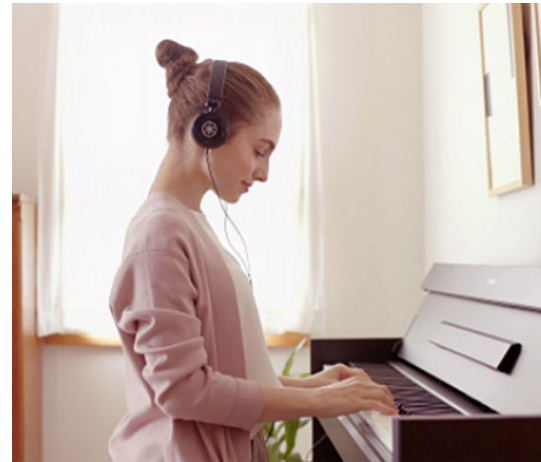
ENJOY MORE

Naturally, all ARIUS models have an authentic grand piano sound, they also feature various other built-in instrument sounds, with a total of 10 Voices – including electric piano, organ, vibraphone, and strings.

All ARIUS models also have 353 built-in songs, including 50 famous classical songs, and 303 comprehensive practice exercises from famous composers, such as Beyer, Burgmüller, Czerny, and Hanon. The instrument is also compatible with Yamaha's free Smart Pianist app – simply download the app to your smart device and connect it to the instrument.

Smart Pianist

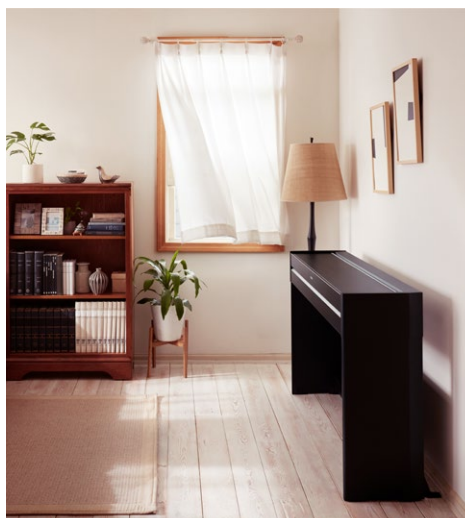
With the Smart Pianist app, you can easily operate the various Voice functions of the instrument and use it to view scores of the built-in songs. It also features a comprehensive Piano Room function for changing the tonal quality and resonance settings of the piano sound.



SOUND BALANCE

Both ARIUS models employ new technology that optimally corrects the sound balance according to the volume you set – giving you an exceptionally natural sound that's easy to listen to and is gentle on the ears, even when playing for a long time.

It also has a Stereophonic Optimizer effect that lets you enjoy the natural, spacious sound you experience sitting in front of an acoustic grand piano, even when wearing headphones.



DESIGN

While based primarily on straight lines, the YDP-145 has a stylish design that incorporates elegant curves that are typical of a grand piano. The piano cabinet of the YDP-S35 has a slim depth that lets you neatly install it in any room, and makes for a chic, stylish design that effortlessly enhances your living space. Moreover, you can choose from a variety of color variations to find the one that suits your interior and personal taste.

SPECIFICATION CHART

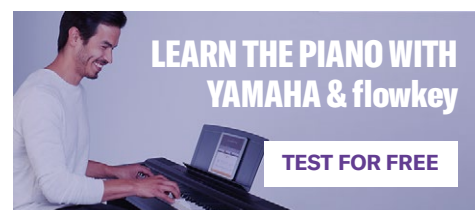
NAME		YDP-145		YDP-S35	
Product Name		Digital Piano			
Size/Weight	Width	1,357 mm [53-7/16"]		1,353 mm [53-1/4"]	
	Height	815 mm [32-1/16"] (With music rest raised: 969 mm [38-1/8"])		792 mm [31-3/16"] (Key cover open: 968 mm [38-1/8"])	
	Depth	422 mm [16-5/8"]		296 mm [11-5/8"] (Key cover open: 309 mm [12-3/16"]) *With anti-fall brackets attached, the depth is 366 mm [14-13/32"].	
	Weight	38.0 kg (83 lbs., 12 oz.)		37.0 kg (81 lbs., 9 oz.)	
Control Interface	Keyboard	Number of Keys	88		
		Type	GHS (Graded Hammer Standard) keyboard with matte black keytops		
		Touch Response	Hard/Medium/Soft/Fixed		
	Pedal	Number of Pedals	3		
		Half Pedal	Yes (Damper)		
		Functions	Damper, Sostenuto, Soft		
	Panel	Language	English		
Cabinet	Key Cover Style		Sliding	Folding	
	Music Rest		Yes		
Voices	Tone Generation	Piano Sound	Yamaha CFX		
	Piano Effect	Virtual Resonance Modeling Lite (VRM Lite)	Yes		
		Key-off Samples	Yes		
	Polyphony (max.)		192		
	Preset	Number of Voices	10		
Effects	Types	Reverb	4 types		
		Intelligent Acoustic Control (IAC)	Yes		
		Stereophonic Optimizer	Yes		
	Functions	Dual	Yes		
		Duo	Yes		
Songs (MIDI)	Preset	Number of Presets	10 Voice Demo Songs, 50 Classics, 303 Lesson Songs		
	Recording	Number of Songs	1		
		Number of Tracks	2		
		Data Capacity	Approx. 100 KB/Song (approx. 11,000 notes)		
Functions	Overall Controls	Metronome	Yes		
		Tempo Range	5 - 280		
		Transpose	-6 - 0 - +6		
		Tuning	414.8 - 440.0 - 466.8 Hz (approx. 0.2 Hz increments)		
		USB Audio Interface	44.1 kHz, 24 bit, stereo		



SPECIFICATION CHART

NAME		YDP-145	YDP-S35
Connectivity	DC IN	12 V	
	Headphones Output	Standard stereo phone jack (× 2)	
	USB TO HOST	Yes	
Sound System	Amplifiers	8 W × 2	
	Speakers	12 cm × 2	
Power Supply	AC Adaptor	PA-150 or an equivalent recommended by Yamaha (Output: DC 12 V, 1.5 A)	
	Power Consumption	9 W (When using PA-150 AC adaptor)	
	Auto Power Off	Yes	
Included Accessories		Owner's Manual	
		50 Classical Music Masterpieces (Music Book)	
		AC adaptor: PA-150 or an equivalent	
		Online Member Product Registration	
Separately Sold Accessories (May not be available depending on your area.)		HPH-150/100/50 headphones	

[DOWNLOAD MORE INFORMATION](#)





Yamaha Music Europe GmbH • Siemensstr. 22-34 • 25462 Rellingen/Germany
www.yamaha.com

The descriptions and photos in this brochure are for information only. Yamaha reserves the right to change the products and technical data at any time without notice.
As the technical data may vary from country to country, please obtain information from your Yamaha subsidiary. No liability is accepted for printing errors. Status: January 2022