

User Manual

Outdoor IP Security Camera



Model: SD2/HT2/SD4

Table of Contents

Security Warning.....	1
1 Overview.....	2
1.1 Key Features.....	2
1.2 Read before Use.....	3
1.3 Packing Contents.....	3
1.4 Physical Description.....	3
1.5 SD Card Management.....	4
1.6 Wall Installation.....	5
2 Access the IP Camera in Foscam App.....	6
2.1 Setting Up Your Camera:Wired Connection via Foscam App.....	6
3 Specification.....	6

Security Warning

- Please change the password of your camera regularly, using a combination of numbers, letters and special characters.
- We recommend that you regularly update your camera to the latest available software and firmware versions to help ensure the best experience for your camera.

1 Overview

Foscam Outdoor IP Security Camera is an integrated IP Camera with a color CMOS sensor enabling viewing in High Definition resolution. It combines a high quality digital video camera, with a powerful web server, to bring clear video to your desktop from anywhere on your local network or over the Internet.

The IP Camera supports the industry-standard H.264 compression technology, drastically reducing file sizes and conserving valuable network bandwidth.

The IP Camera is based on the TCP / IP standard. There is a WEB server inside which could support Internet Explorer. Therefore the management and maintenance of your device is simplified by using the network to achieve the remote configuration and start-up.

The camera is designed for outdoor surveillance applications such as courtyards, supermarket, and school. Controlling the IP camera and managing images are simplified by using the provided web interface across the network utilizing connectivity.

1.1 Key Features

- ◆ Standard H.264 video compression algorithm to satisfy the transmission of high definition video in narrow bandwidth network
- ◆ 2.0 Mega-Pixel(SD2/HT2)
- ◆ 4.0 Mega-Pixel(SD4)
- ◆ Supports WPA and WPA2 Encryption
- ◆ Supports Pan & Tilt
- ◆ Supports 4x Optical Zoom
- ◆ 6pcs Infrared-LEDs, night vision range up to 50 metres (164ft)
- ◆ Supports image snapshot
- ◆ Supports dual-stream
- ◆ Supports 2.4G/5G dual band, IEEE802.11b/g/n/ac
- ◆ Supports IR-Cut and the filter change automatically
- ◆ Supports remote viewing & record from anywhere anytime
- ◆ Multi-level users management with password protection
- ◆ Motion detection alert via email or upload image to FTP
- ◆ Supports multiple network protocols: IP、TCP、UDP、SMTP、FTP、DHCP、RTSP
- ◆ Providing Video Management Software to manage or monitor multi-cameras
- ◆ Supports Wide Dynamic Range
- ◆ Supports sound detection
- ◆ Supports IP Filtering
- ◆ Supports Alexa
- ◆ Supports Google Assistant
- ◆ Supports 128G Micro SD Card Storage(External)

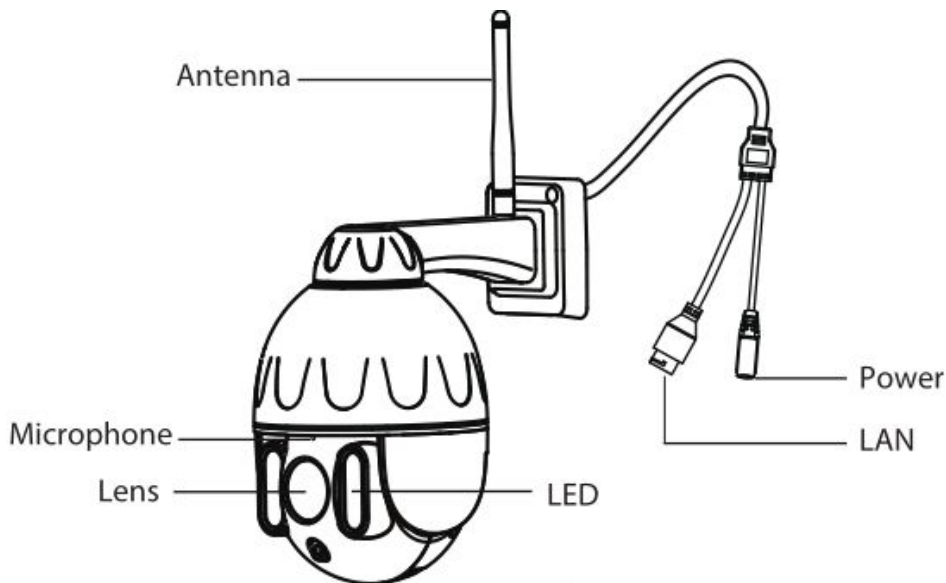
1.2 Read before Use

Please first verify that all contents received are complete according to the Package Contents listed below. Before the Network Camera is installed, please carefully read and follow the instructions in the Quick Setup Guide to avoid damage due to faulty assembly and installation. This also ensures the product is used properly as intended.

1.3 Packing Contents

• IP Camera × 1	• Power Adapter × 1
• Quick Setup Guide × 1	• Ethernet Cable × 1
• Mounting Plate × 1	• Wi-Fi Antenna × 1
• Screwdriver × 1	

1.4 Physical Description



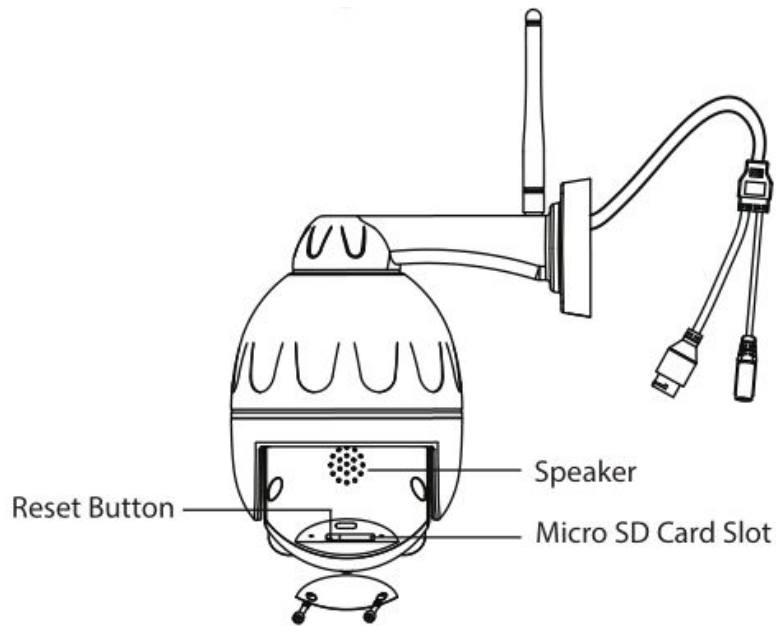
LED: 6pcs Infrared-LEDs, night vision range up to 50 metres / 164ft.

Lens: High Definition Color CMOS Sensor sensor with zoom lens.

Antenna: Wireless Antenna

Power: Connect the external power adapter, request for 12V / 2A power.

LAN: 10/100M adaptive Ethernet interface. Through this interface, IP camera can be connected with various network devices, such as hub, router, etc.



Reset Button

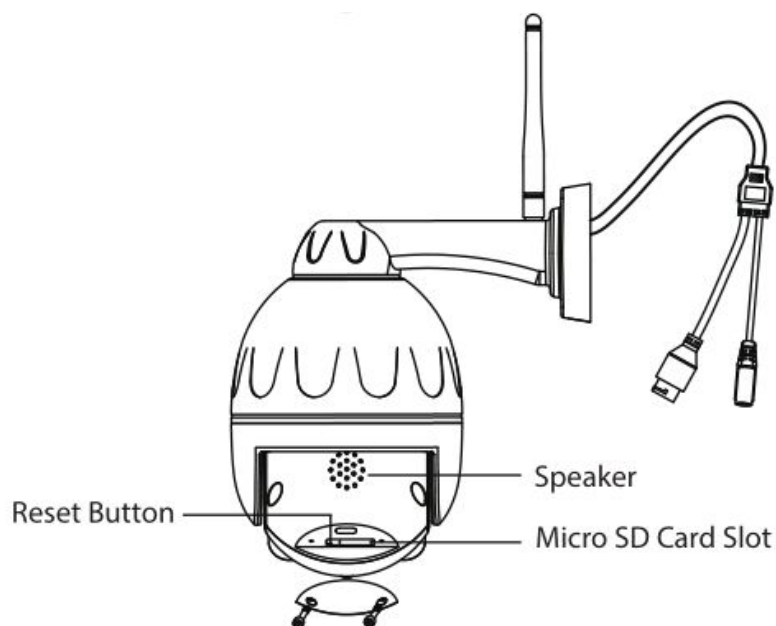
Press and hold on the reset button for 5 seconds. Releasing the reset button, the password will back to the factory default administrator password. The default administrator user is admin with no password.

Micro SD Card slot: Supports up to 128GB SD card for storing the video.

Speaker: Built-in speaker.

NOTE: There are up to two labels located at the bottom of the camera, this is an important feature of original Foscam cameras. If your camera does not have labels, it may be a clone. Cloned Foscam cameras can not use original firmware and are not eligible for warranty or technical services.

1.5 SD Card Management



The record files of the IP camera can be stored in the Micro SD Card.

This camera supports Micro SD Card and the max size of Micro SD card must be under 128G.

You need open the cover, then plug the Micro SD card into Micro SD card slot inside the IP camera.

When you plug in the Micro SD card during the camera work process, please reboot the camera again, or else the Micro SD Card may be cannot work well. When you re-install the cover, please ensure the tightness with the camera.

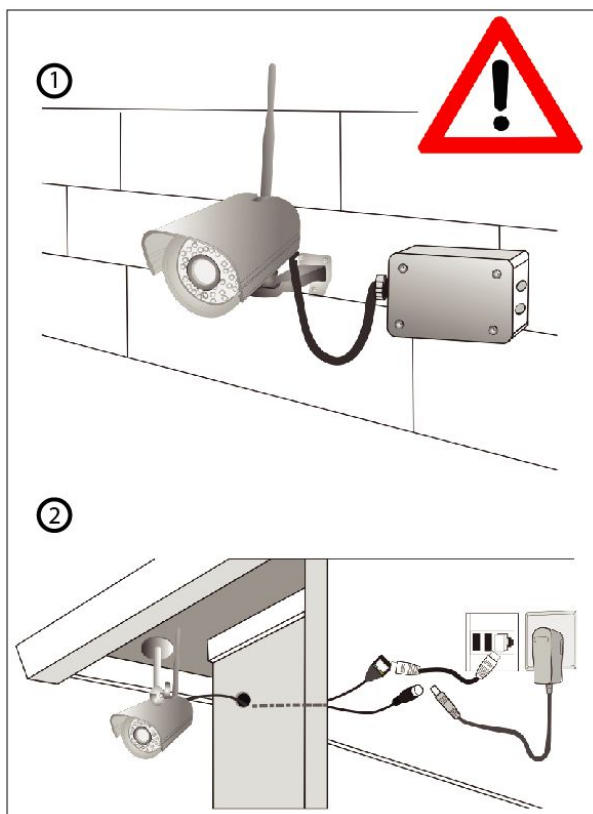
Warning: Please lock the cover in time after installing the Micro SD card to avoid water or water vapor fall into the equipment then cause damage or lens fog.

1.6 Wall Installation

Please refer to the **Quick Setup Guide**.

NOTE: Ensure that the rain or water will not reach the connector ports at the end of the pig tail wiring. These connectors are not weather-resistant.

The cable of an outdoor camera should, from the position where the cable is divided into several cables, be fitted dry. Install the cable into a waterproof junction box (1) or bring the cable indoors (2).



2 Access the IP Camera in Foscam App

2.1 Setting Up Your Camera:Wired Connection via Foscam App

Scan the QR code below to download and install the Foscam APP.



Note: For the best experience, please update the APP to the latest version!

Camera Setup Steps: Please refer to the Quick Setup Guide.

https://foscam.com/downloads/quick_installation_guide_lang.html?category=English&q=sd2

3 Specification

ITEMS		SD2/HT2
Image Sensor	Sensor	CMOS Sensor 1/2.9
	Display Resolution	2.0MegaPixels(1920*1080)
	Min. Illumination	N/A
Lens	Lens Type	Glass Lens 2.8-12mm
	Angle of view	D 42.2°- 93.2° H 38.6° - 80.7°
Video	Image Compression	H.264
	Image Frame Rate	25fps (1080P) /15fps (720P) /, downward adjustable
	Resolution	1080P(1920x1080),720P(1280 x 720), VGA(640 x 480), QVGA(320 x 240)
	Stream	Dual stream
	Image adjustment	The hue, brightness, contrast, saturation, sharpness are adjustable
	Flip image	flip and mirror
	Infrared mode	Automatic and manual
	Pan/Tilt Angle	Pan:350° / Tilt:90°
Night visibility	6pcs Infrared-LEDs, night vision range up to 50 metres	
Audio	Input/Output	Supports two-way audio
	Audio Compression	PCM/G.726

Network	Ethernet	One 10/100Mbps RJ45 port
	Wireless Standard	IEEE802.11b/g/n/ac
	Data Rate	IEEE802.11b: 11Mbps(Max.); IEEE802.11g: 54Mbps(Max.); IEEE802.11n: 150Mbps(Max.). IEEE802.11ac: 433Mbps(Max.).
	Wireless Security	WPA, WPA2
	Remote Access	P2P
	Network Protocol	IP、TCP、UDP、HTTP、HTTPS、SMTP、FTP、DHCP、RTSP、ONVIF
System Requirements	Operating System	Microsoft Windows XP, 7, 8; Mac OS; iOS、Android
Other Features	Motion Detection	Alarm via E-Mail, upload alarm snapshot to FTP
	Sound Detection	Supports sound detection
	AI	Human detection
	User Accounts	Three levels user role
	Firewall	Supports IP Filtering
	Reset	Reset button is available
	Intelligent Assistant	Supports Alexa, Google Assistant
Power	Power Supply	DC 12V/2.0A
	Power Consumption	20 Watts (Max.)
Physical	Dimension(LxWxH)	180 mm x 111 mm x 180 mm
	Net Weight	1000g
Environment	Waterproof	IP66
	Operating Temperature	-20°C ~ 60° (-4°F ~ 140°F)
	Operating Humidity	20% ~ 85% non-condensing
	Storage Temperature	-20°C ~ 60° (-4°F ~ 140°F)
	Storage Humidity	0% ~ 90% non-condensing
Certification	FCC、CE、RoHS、IP66	

ITEMS		SD4
Image Sensor	Sensor	CMOS Sensor 1/2.9
	Display Resolution	4.0MegaPixels(2304*1536)
	Min. Illumination	N/A
Lens	Lens Type	Glass Lens 2.8-12mm
	Angle of view	D 42.2°- 93.2° H 38.6°- 80.7°
Video	Image Compression	H.264
	Image Frame Rate	Max 20fps (2K) , downward adjustable
	Resolution	4MP(2304x1536) 20fps,3MP(2304x1296)25fps,1080P(1920x1080) 25fps,720P(1280 x 720), VGA(640 x 480)

	Stream	Dual stream
	Image adjustment	The hue, brightness, contrast, saturation, sharpness are adjustable
	Flip image	flip and mirror
	Infrared mode	Automatic and manual
	Pan/Tilt Angle	Pan:350° / Tilt:90°
	Night visibility	6pcs Infrared-LEDs, night vision range up to 50 metres
Audio	Input/Output	Supports two-way audio
	Audio Compression	PCM/G.726
Network	Ethernet	One 10/100Mbps RJ45 port
	Wireless Standard	IEEE802.11b/g/n/ac
	Data Rate	IEEE802.11b: 11Mbps(Max.); IEEE802.11g: 54Mbps(Max.); IEEE802.11n: 150Mbps(Max.). IEEE802.11ac: 433Mbps(Max.).
	Wireless Security	WPA, WPA2
	Remote Access	P2P
	Network Protocol	IP、TCP、UDP、SMTP、FTP、DHCP、RTSP
System Requirements	Operating System	Microsoft Windows XP, 7, 8; Mac OS; iOS、Android
Other Features	Motion Detection	Alarm via E-Mail, upload alarm snapshot to FTP
	Sound Detection	Supports sound detection
	AI	Human detection
	User Accounts	Three levels user role
	Firewall	Supports IP Filtering
	Reset	Reset button is available
	Intelligent Assistant	Supports Alexa, Google Assistant
Power	Power Supply	DC 12V/2.0A
	Power Consumption	20 Watts (Max.)
Physical	Dimension(LxWxH)	180 mm x 111 mm x 180 mm
	Net Weight	1000g
Environment	Waterproof	IP66
	Operating Temperature	-20°C ~ 60° (-4°F ~ 140°F)
	Operating Humidity	20% ~ 85% non-condensing
	Storage Temperature	-20°C ~ 60° (-4°F ~ 140°F)
	Storage Humidity	0% ~ 90% non-condensing
Certification	FCC、CE、RoHS、IP66	

For other parts, please refer to the “FOSCAM Camera User Manual”