



1 Intended use

The product is a decorative net light.

The product is not suitable for domestic lighting.

The product is powered by a rechargeable battery that is recharged via the solar panel during the daylight hours.

The product has an IP44 ingress protection rating. It is splash proof and suitable for outdoor use. Do not submerge in water.

If you use the product for purposes other than those described, the product may be damaged.

Improper use can result in short circuits, fires, or other hazards.

The product complies with the statutory national and European requirements.

For safety and approval purposes, you must not rebuild and/or modify the product.

Read the operating instructions carefully and store them in a safe place. Make this product available to third parties only together with the operating instructions.

All company names and product names are trademarks of their respective owners. All rights reserved.

2 Delivery contents

- Net light with solar panel
- Operating instructions
- Ground spike

3 Latest product information

Download the latest product information at www.conrad.com/downloads or scan the QR code shown. Follow the instructions on the website.

4 Description of symbols

The following symbols are on the product/appliance or are used in the text:



The symbol warns of hazards that can lead to personal injury.



Read the operating instructions carefully.



This product is constructed according to protection class III.

5 Safety instructions



Read the operating instructions carefully and especially observe the safety information. If you do not follow the safety instructions and information on proper handling, we assume no liability for any resulting personal injury or damage to property. Such cases will invalidate the warranty/guarantee.

5.1 General

- The product is not a toy. Keep it out of the reach of children and pets.
- Do not leave packaging material lying around carelessly. This may become dangerous playing material for children.
- If you have questions which remain unanswered by this information product, contact our technical support service or other technical personnel.
- Maintenance, modifications and repairs must only be completed by a technician or an authorised repair centre.

5.2 Handling

- Handle the product carefully. Jolts, impacts or a fall even from a low height can damage the product.

5.3 Rechargeable battery

- Correct polarity must be observed while inserting the rechargeable battery.
- The rechargeable battery should be removed from the device if it is not used for a long period of time to avoid damage through leaking. Leaking or damaged rechargeable batteries might cause acid burns when in contact with skin, therefore use suitable protective gloves to handle corrupted rechargeable batteries.
- Rechargeable batteries must be kept out of reach of children. Do not leave rechargeable batteries lying around, as there is risk, that children or pets swallow them.
- Rechargeable batteries must not be dismantled, short-circuited or thrown into fire. Never recharge non-rechargeable batteries. There is a risk of explosion!

5.4 Operating environment

- Do not place the product under any mechanical stress.
- Protect the appliance from extreme temperatures, strong jolts, flammable gases, steam and solvents.

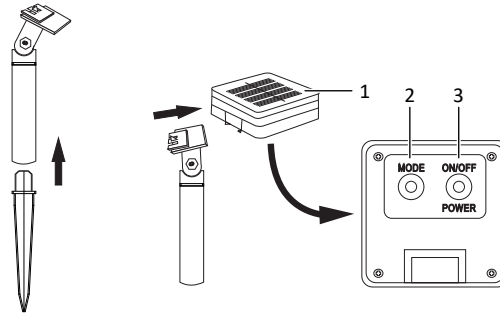
5.5 Operation

- Lights become hot. Risk of fire! Remove from packaging before operating. Fully lay lights out and install before operating.
- Consult an expert when in doubt about the operation, safety or connection of the product.
- If it is no longer possible to operate the product safely, take it out of operation and protect it from any accidental use. DO NOT attempt to repair the product yourself. Safe operation can no longer be guaranteed if the product:
 - is visibly damaged,
 - is no longer working properly,
 - has been stored for extended periods in poor ambient conditions or
 - has been subjected to any serious transport-related stresses.

5.6 LED light

- Do not look directly into the LED light!
- Do not look into the beam directly or with optical instruments!

6 Product overview



- 1 Solar unit
- 2 Button MODE (switch light modes)
- 3 Button POWER (on/off)

7 Getting started

7.1 Finding a location

Find a location that exposes the solar module to full sunlight to allow the rechargeable battery to recharge during the day.

Consider the following:

- The solar panel should be exposed to maximum sunlight. Do not set up the product in the shade or under any cover.
- Avoid the direct proximity of other light sources such as yard or streetlights, otherwise the product will not switch on automatically at nightfall.
- Avoid locations that are likely to be flooded.
- If the product has a ground spike, the location should be level and sufficiently firm (example: soil). Stony subsurfaces damage the ground spike.

7.2 Securing in the ground

After selecting a suitable location, secure the product in the ground.

1. Attach the ground spike to the base of the product.
2. Firmly hold the ground spike and insert it into the ground.
3. Check if the product secured. If not, find a more suitable location.

7.3 Charging for the first time

When using the product for the first time or after prolonged periods of low sunlight, fully charge the rechargeable battery for 2 days in sunlight.

1. (If an insulation strip protrudes from the battery compartment) pull it out to establish the power supply.
2. During daylight, press the button **POWER** to switch the product on. Expose the solar panel to sunlight for as long as possible.
3. Before it gets dark, press the button **POWER** to switch the product off to prevent it from switching on automatically.
4. On the next day, charge again.

→ After 2 days, the rechargeable battery is charged and the product ready for use.

8 Operation

Use the button **POWER** and button **MODE** on the solar unit to control the lights.

Switching on and off

1. Push the button **POWER** to activate the lights.
 - The lights will **switch on** as soon as it gets dark.
 - The lights will **switch off** as soon as it gets light.
2. Push the button **POWER** to deactivate the lights.

Selecting light modes

1. Repeatedly push the button **MODE** to switch between the light modes solid and flashing.

9 Replacing the battery

If the operation duration of the light becomes significantly shorter, replace the rechargeable battery.

Preconditions:

- ✓ Prepare a new rechargeable battery of the correct type as stated in the section "Technical data".

1. Remove all screws from the underside of the product.
 2. Remove the cover.
 3. Remove the depleted rechargeable battery.
 4. Insert the new rechargeable battery into the battery compartment observing the polarity markings in the compartment.
 5. Install the cover and tighten the screws.
- The product is ready for operation again.

10 Cleaning

Important:

- Do not use aggressive cleaning agents, rubbing alcohol or other chemical solutions. They damage the housing and can cause the product to malfunction.
- Do not immerse the product in water.

1. Switch the product off.
2. Let the product cool down to ambient temperature.
3. Clean the product with a dry, fibre-free cloth.

11 Disposal

11.1 Product



This symbol must appear on any electrical and electronic equipment placed on the EU market. This symbol indicates that this device should not be disposed of as unsorted municipal waste at the end of its service life.

Owners of WEEE (Waste from Electrical and Electronic Equipment) shall dispose of it separately from unsorted municipal waste. Spent batteries and accumulators, which are not enclosed by the WEEE, as well as lamps that can be removed from the WEEE in a non-destructive manner, must be removed by end users from the WEEE in a non-destructive manner before it is handed over to a collection point.

Distributors of electrical and electronic equipment are legally obliged to provide free take-back of waste. Conrad provides the following return options **free of charge** (more details on our website):

- in our Conrad offices
- at the Conrad collection points
- at the collection points of public waste management authorities or the collection points set up by manufacturers or distributors within the meaning of the ElektroG

End users are responsible for deleting personal data from the WEEE to be disposed of.

It should be noted that different obligations about the return or recycling of WEEE may apply in countries outside of Germany.

11.2 (Rechargeable) batteries

Remove batteries/rechargeable batteries, if any, and dispose of them separately from the product. According to the Battery Directive, end users are legally obliged to return all spent batteries/rechargeable batteries; they must not be disposed of in the normal household waste.



Batteries/rechargeable batteries containing hazardous substances are labelled with this symbol to indicate that disposal in household waste is forbidden. The abbreviations for heavy metals in batteries are: Cd = Cadmium, Hg = Mercury, Pb = Lead (name on (rechargeable) batteries, e.g. below the trash icon on the left).

Used (rechargeable) batteries can be returned to collection points in your municipality, our stores or wherever (rechargeable) batteries are sold. You thus fulfil your statutory obligations and contribute to environmental protection.

Batteries/rechargeable batteries that are disposed of should be protected against short circuit and their exposed terminals should be covered completely with insulating tape before disposal. Even empty batteries/rechargeable batteries can contain residual energy that may cause them to swell, burst, catch fire or explode in the event of a short circuit.

12 Technical data

12.1 Power supply

Battery power supply	1x 1.2 V Ni-MH 600 mAh (AA) rechargeable battery
Solar panel	Polycrystalline 2 V 150 mA
Charging time	8 h
Discharging time.....	8 h

12.2 Light

Illuminant	LED
Replaceable illuminant	No
Light activation threshold	30 lux
Light deactivation threshold.....	300 lux
LED count.....	192
Colour temperature	2700 - 3000 K

12.3 Environment

Operating temperature	-20 to +70 °C
Storage temperature	-20 to +70 °C

12.4 Others

Ingress protection	IP44
Lead wire length	1 m
Total length.....	4 m
Net dimensions (L x H).....	3 x 2 m
Weight (approx.)	610 g

This is a publication by Conrad Electronic SE, Klaus-Conrad-Str. 1, D-92240 Hirschau (www.conrad.com).

All rights including translation reserved. Reproduction by any method (e.g. photocopying, microfilming or the capture in electronic data processing systems) requires prior written approval from the editor. Reprinting, also in part, is prohibited. This publication reflects the technical status at the time of printing.

Copyright by Conrad Electronic SE.

*2585412_V2_1222_jh_mh_en 27021598422675595 I4/O2 en