

Data Sheet

powered
by 

Ø 22/25 mm Push Button Switches



S2PR Series CATALOG

For your safety, read and follow the considerations written in the instruction manual, other manuals and Autonics website.

The specifications, dimensions, etc. are subject to change without notice for product improvement. Some Models may be discontinued without notice.

Features

- Smooth operation
- High electrical conductivity
- Long-lasting durability

Data Sheet

■ Illuminated									
S2PR	1	2	-	3	4	5	6	7	8
Control unit						Block			

- | | |
|--|---|
| <p>1 Appearance
No mark: Round
S: Square</p> <p>2 Letter marking
No mark: Push (control unit + singular type block)
No mark: None (control unit + modular type block)
U: None (control unit) ⁰¹⁾</p> <p>3 Button type
P: Extended
E: Button extended (round)</p> <p>4 Button color
R: Red
B: Blue
G: Green
Y: Yellow
W: White</p> | <p>5 Arrow direction (square)
No mark: No mark
L: Left/Right
U: Up/Down</p> <p>6 Contact block
A: 1 A contact
2A: 2 A contacts
B: 1 B contact
2B: 2 B contacts
AB: 1 A contact, 1 B contact</p> <p>7 LED block
D: 1 AC/DC voltage type
L: 1 AC voltage type</p> <p>8 Block
No mark: Singular type
M: Modular type</p> |
|--|---|

01) Only available for control unit. Select the block separately.

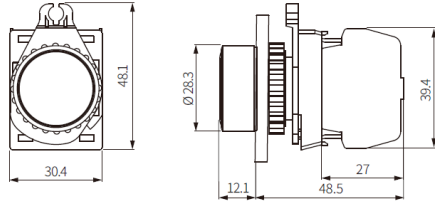
Model	Contact block		LED block	
	A contact	B contact	AC/DC voltage	AC voltage
S2PR-P3□AD(M)	1	-	1	-
S2PR-P3□2AD(M)	2	-		
S2PR-P3□BD(M)	-	1		
S2PR-P3□2BD(M)	-	2	-	1
S2PR-P3□ABD(M)	1	1		
S2PR-P3□AL(M)	1	-		
S2PR-P3□2AL(M)	2	-	1	-
S2PR-P3□BL(M)	-	1		
S2PR-P3□2BL(M)	-	2		
S2PR-P3□ABL(M)	1	1	-	1
S2PR-E3□AD(M)	1	-		
S2PR-E3□2AD(M)	2	-		
S2PR-E3□BD(M)	-	1	1	-
S2PR-E3□2BD(M)	-	2		
S2PR-E3□ABD(M)	1	1		
S2PR-E3□AL(M)	1	-	-	1
S2PR-E3□2AL(M)	2	-		
S2PR-E3□BL(M)	-	1		
S2PR-E3□2BL(M)	-	2	1	-
S2PR-E3□ABL(M)	1	1		
S2PRS-P3□AD(M)	1	-		
S2PRS-P3□2AD(M)	2	-		
S2PRS-P3□BD(M)	-	1		
S2PRS-P3□2BD(M)	-	2	-	1
S2PRS-P3□ABD(M)	1	1		
S2PRS-P3□AL(M)	1	-		
S2PRS-P3□2AL(M)	2	-	-	1
S2PRS-P3□BL(M)	-	1		
S2PRS-P3□2BL(M)	-	2		
S2PRS-P3□ABL(M)	1	1	1	-
S2PRS-P3□LAD(M)	1	-		
S2PRS-P3□2LAD(M)	2	-		
S2PRS-P3□LBD(M)	-	1	-	1
S2PRS-P3□2LBD(M)	-	2		
S2PRS-P3□LABD(M)	1	1		
S2PRS-P3□LAL(M)	1	-	-	1
S2PRS-P3□2LAL(M)	2	-		
S2PRS-P3□LBL(M)	-	1		
S2PRS-P3□2LBL(M)	-	2	1	-
S2PRS-P3□LABL(M)	1	1		
S2PRS-P3□UAD(M)	1	-		
S2PRS-P3□UBD(M)	-	1	-	1
S2PRS-P3□2UBD(M)	-	2		
S2PRS-P3□UABD(M)	1	1		
S2PRS-P3□UAL(M)	1	-	-	1
S2PRS-P3□2UAL(M)	2	-		
S2PRS-P3□UBL(M)	-	1		
S2PRS-P3□2UBL(M)	-	2		
S2PRS-P3□UABL(M)	1	1		

Data Sheet

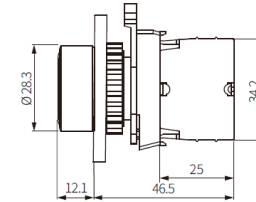
Dimensions

- Unit: mm. For the detailed drawings, follow the Autonics website.
- Panel thickness: ≤ 6 mm

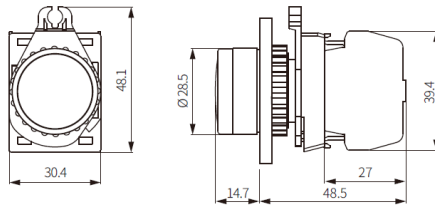
■ **S2PR-P1** □ (round, non-illuminated, extended, singular type block)



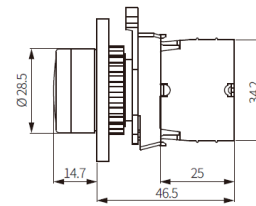
■ **S2PR-P1** □ M (round, non-illuminated, extended, modular type block)



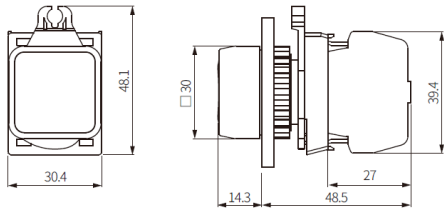
■ **S2PR-P3** □ (round, illuminated, extended, singular type block)



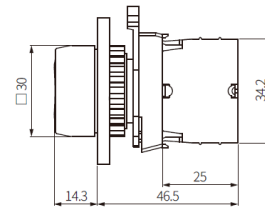
■ **S2PR-P3** □ M (round, illuminated, extended, modular type block)



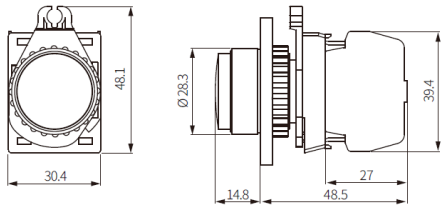
■ **S2PRS-P** □ (square, extended, singular type block)



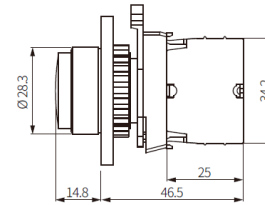
■ **S2PRS-P** □ M (square, extended, modular type block)



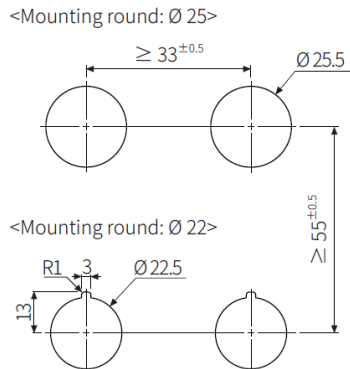
■ **S2PR-E** □ (round, button extended, singular type block)



■ **S2PR-E** □ M (round, button extended, modular type block)



■ **Panel cut-out**



Data Sheet

Item No.	Model No.	Description	Illumination
2586002	S2PR-P1R	22/25 mm, Red, Round	Non-illuminated
2586003	S2PRU-P3R	22/25 mm, Red, Round	Illuminated
2586004	S2PRS-P-R	22/25 mm, Red, Square	Non-illuminated
2586005	S2PRSU-P3R	22/25 mm, Red, Square	Illuminated

Contact blocks and LED blocks

Item No.	Model	Description
2465053	SA-CA	Contact block, A contact, Singular type
2465054	SA-CAM	Contact block, A contact, Modular type
2465055	SA-CB	Contact block, B contact, Singular type
2465056	SA-CBM	Contact block, B contact, Modular type
2465057	SA-LD	LED block, White, Singular type, 12-24 V/DC V/AC
2465058	SA-LDM	LED block, White, Modular type, 12-24 V/DC V/AC
2465059	SA-LA	LED block, White, Singular type, 110-240 V/AC
2465060	SA-LAM	LED block, White, Modular type, 110-240 V/AC
2465061	SA-LAB	LED block, Blue, Singular type, 110-240 V/AC
2465062	SA-LAG	LED block, Green, Singular type, 110-240 V/AC
2465063	SA-LAR	LED block, Red, Singular type, 110-240 V/AC
2465064	SA-LAY	LED block, Yellow, Singular type, 110-240 V/AC
2465065	SA-LABM	LED block, Blue, Modular type, 110-240 V/AC
2465066	SA-LAGM	LED block, Green, Modular type, 110-240 V/AC
2465067	SA-LARM	LED block, Red, Modular type, 110-240 V/AC
2465068	SA-LAYM	LED block, Yellow, Modular type, 110-240 V/AC
2465069	SA-LDBM	LED block, Blue, Modular type, 12-24 V/DC V/AC
2465070	SA-LDGM	LED block, Green, Modular type, 12-24 V/DC V/AC
2465071	SA-LDRM	LED block, Red, Modular type, 12-24 V/DC V/AC
2465072	SA-LDYM	LED block, Yellow, Modular type, 12-24 V/DC V/AC
2465073	SA-LDR	LED block, Red, Singular type, 12-24 V/DC V/AC
2465674	SA-LDG	LED block, Green, Singular type, 12-24 V/DC V/AC
2465074	SA-LDY	LED block, Yellow, Singular type, 12-24 V/DC V/AC
2465075	SA-LDB	LED block, Blue, Singular type, 12-24 V/DC V/AC