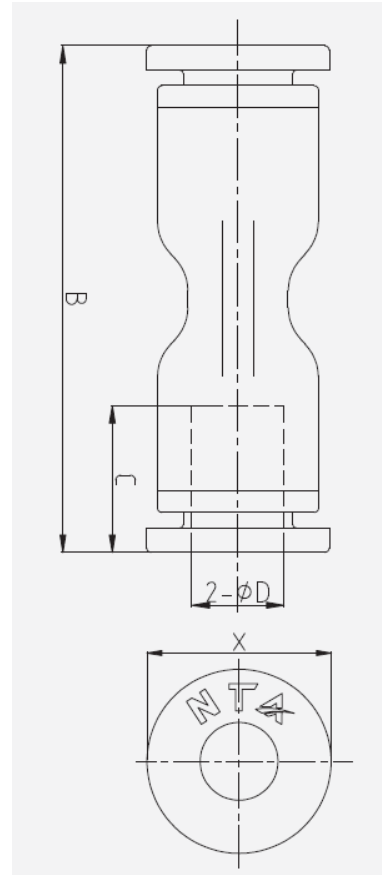


Data Sheet

Push in fitting, Union - Straight



- Pressure range: 0 -10 bar
- Negative pressure: -1 bar (10 Torr)
- Max. pressure: 15 bar
- Temperature range: -10 – 80 °C

Item no.	Model no.	D	B	C	X
2615637	PU4	4	33.4	15.3	9.9
2615638	PU6	6	35.5	16.7	11.8
2615639	PU8	8	39.5	19.1	13.8
2615640	PU10	10	46.2	21.2	16.8
2615641	PU12	12	50.6	24.4	19.8