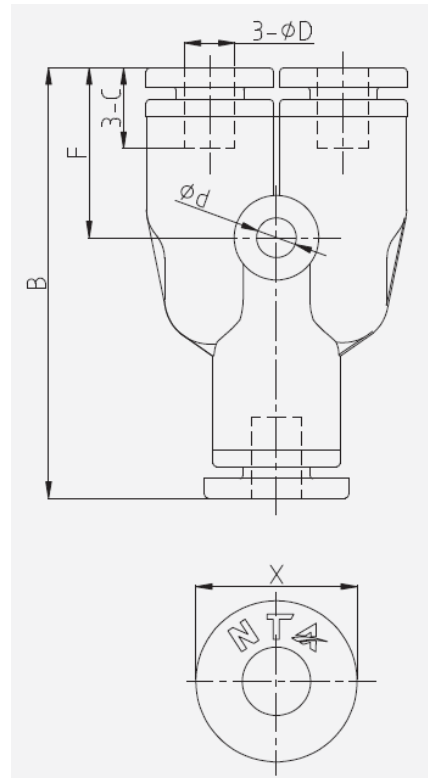


Data Sheet

Push in fitting, Union – Y.Tube



- Pressure range: 0 -10 bar
- Negative pressure: -1 bar (10 Torr)
- Max. pressure: 15 bar
- Temperature range: -10 – 80 °C

Item no.	Model no.	D	B	F	C	X	d
2615647	PY4	4	35.9	14.2	15.3	9.9	3.3
2615648	PY6	6	38.5	15	16.7	11.8	3.2
2615649	PY8	8	43.4	19.7	19.1	13.8	3.3
2615650	PY10	10	49	20.5	21.2	16.8	4.3
2615651	PY12	12	55.6	22.8	24.4	19.8	4.2