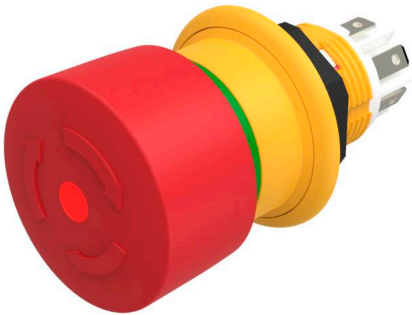


EAO – Your Expert Partner for Human Machine Interfaces

61-6451.4257 - Emergency stop switch compact - Actuator

61-6451.4257 - Emergency stop switch compact - Actuator



Attention: The preview is based on a sample product. This can differ from your current configuration.

Attribute

Design	raised
Front form	round
IP front protection	IP66, IP67, IP69K
Mounting cut-out	Ø 16 mm
Contacts	2 NC
Dimension	Ø 27 mm
Front dimension	Ø 27 mm
IK Protection	IK06 (cover D40)
Illumination colour	Red
Kind of illumination	LED with polarity reversal protection
Type of illumination	illuminated
IP Protection	IP67 front side, according to EN IEC 60529/A1:2010-04
Lens colour	Red
Lens illumination	illuminative
Lens material	Plastic
Lens shape	mushroom-head
Operating Travel	4.2 mm
Operating voltage	6 - 32 V DC
Switching action	Maintained
Terminal	Plug-in terminal
Weight	0.02 kg

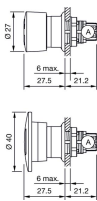
Function

Emergency stop switch

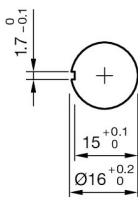
EAO – Your Expert Partner for Human Machine Interfaces

61-6451.4257 - Emergency stop switch compact - Actuator

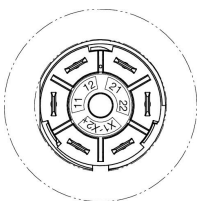
Dimensions



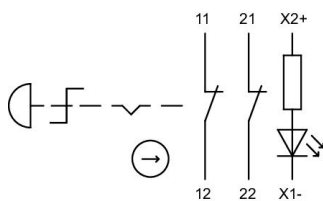
Mounting cut-outs



Component layouts



Wiring diagrams



Additional information

Application as per DIN EN ISO 13850 and EN 60204-1

Twist to unlock clockwise

Application as per DIN EN ISO 13850 and EN 60204-1

Seal Part No. 61-9900

Anti-twist ring No. 51-910

Fixing nut No. 51-991

Plug-in terminals 2.8 mm x 0.5 mm are solderable without UL certificate

Front plate thickness 1 ... 4 mm with an anti-rotation ring

Front plate thickness 1 ... 6 mm without an anti-rotation ring