

### 84-909 - E-stop protective shroud



*Attention: The preview is based on a sample product. This can differ from your current configuration.*

#### Mounting

Mounting cut-out Ø 22.5 mm

#### Other Attributes

Marking no value  
Weight 0.021 kg  
Dimension Ø 45 mm  
Material Metal  
Colour yellow RAL 1003

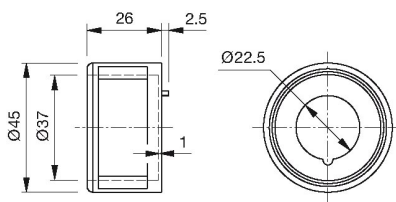
#### IP-Rating

Front protection IP 40

# EAO – Your Expert Partner for Human Machine Interfaces

84-909 - E-stop protective shroud

## Dimensions



## Additional information

Front panel thickness 1 ... 3 mm

With anti-twist device

When using a protective shroud the e-stop or stop switch has to be turned by 180° to be mounted. See dimensional drawing

The protection shroud is not suitable for a proper use of emergency-stop. It can obstruct a spontaneous operation of the emergency-stop