

Data Sheet

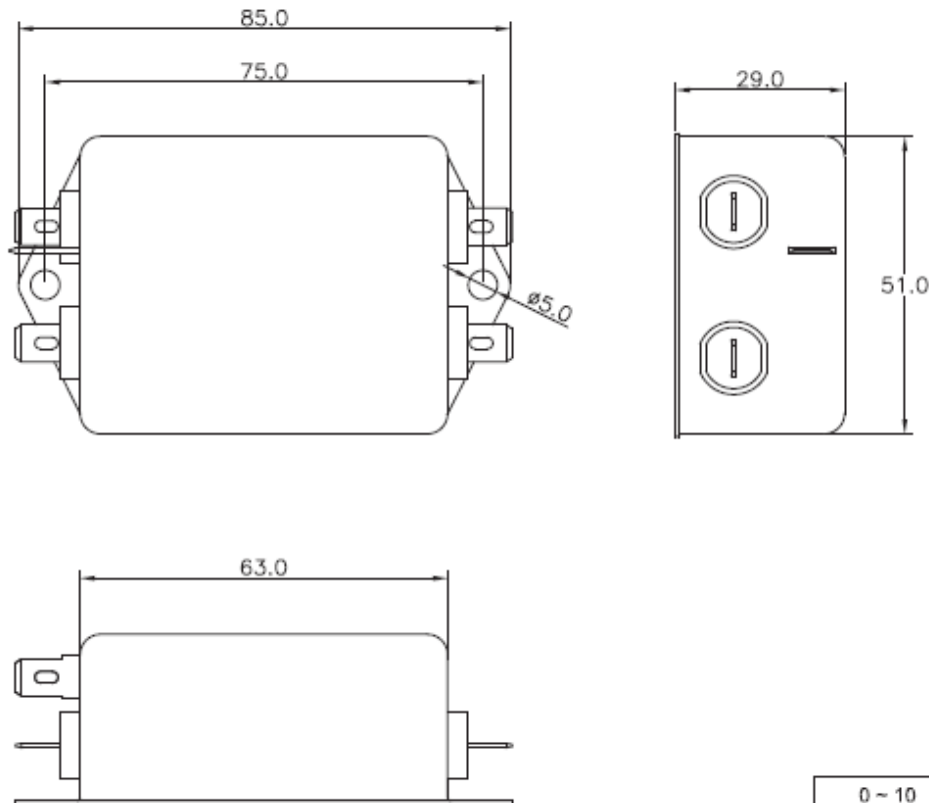
SPECIFICATION FOR APPROVAL

1/2



Name:	EMI FILTER	Part No.:	RD1504008
YBX MODEL:	YB21D3-10A-Q	Customer P/N :	CP001213

1. PART NUMBER: YB21D3-10A-Q

2. PHYSICAL DIMENSIONS:



0 ~ 10	±0.3
10 ~ 100	±0.5
100 ~ 150	±0.8
150 ~ 200	±1.0

Drawing by	Checked by	Approved by	Ordering No.	Unit	Rev.	Dimension Limit	Tolerance
			YB21D3-10A-Q	mm			
2018-09-29							

Data Sheet

SPECIFICATION FOR APPROVAL

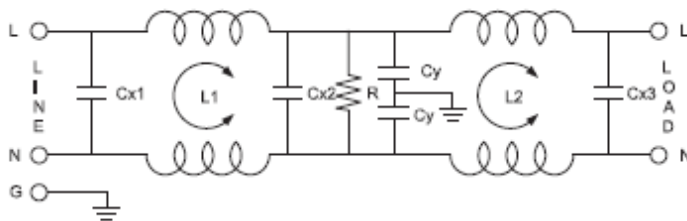
2/2

Name:	EMI FILTER	Part No.:	RD1504008
YBX MODEL:	YB21D3-10A-Q	Customer P/N :	CP001213

3. CHARACTERISTICS:

- (1) VOLTAGE RATING.....115/250VAC
- (2) CURRENT RATING:
 - A. @ 115VAC.....10A RMS Max.
 - B. @ 250VAC.....10A RMS Max.
- (3) OPERATING FREQUENCY: 50/60Hz
- (4) LEAKAGE CURRENT: EACH LINE TO GROUND
 - A. @ 115VAC/60Hz.....0.5mA Max.
 - B. @ 250VAC/50Hz.....1.0mA Max.
- (5) HIPOT RATING(FOR ONE MINUTE)
 - A. LINE TO GROUND.....2250VDC
 - B. LINE TO LINE.....500VDC
- (6) IR: 50M ohm AT 500VDC ANY INPUT OR OUTPUT TO GROUND
- (7) TEMPERATURE RANGE: -25°C~+85°C



4. ELECTRICAL SCHEMATIC:



L1/2: 2x1.2mH
Cx1/2/3: 0.33uF(X2)
Cy: 4700pF(Y2)
R: 1.0M ohm

5. SAFETY COMPLIANCE:

UL :E471748
CQC :CQC14001106207
TUV : B0899310001

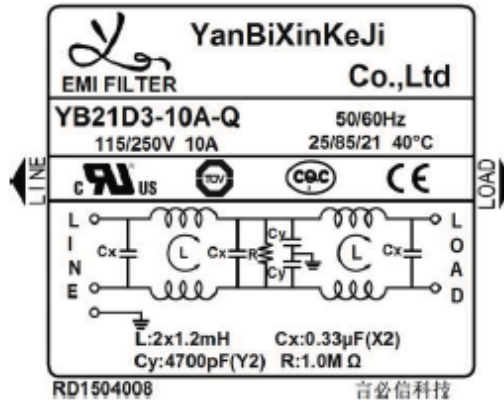
Drawing by	Checked by	Approved by	Ordering No.	Unit	Rev.
			YB21D3-10A-Q	mm	2018-09-29

Data Sheet

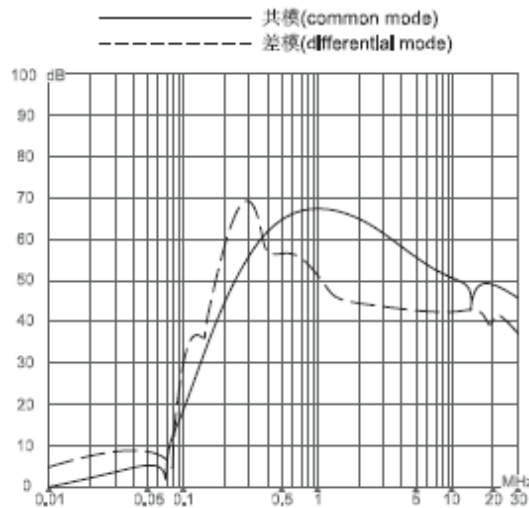
SPECIFICATION FOR APPROVAL



Name:	EMI FILTER	Part No.:	RD1504008
YBX MODEL:	YB21D3-10A-Q	Customer P/N :	CP001213

6. Label:



7. INSERTION LOSS(IN 50 ohm system according IEC/CISPR No.17):



Drawing by	Checked by	Approved by	Ordering No.	Unit	Rev.
			YB21D3-10A-Q	mm	
					2020-10-13