

# WXsmart

CONNECTING THE FUTURE  
OF SOLDERING



# WXsmart

CONNECTING THE FUTURE OF SOLDERING



### Soldering Irons

Active-Tip Heating Technology

- WXMPS MS **NEW**
- WXPP MS
- WXMP MS
- WXUPS MS **NEW**
- WXUP MS

Power-Response Heating Technology

- WXP 65
- WXP 90
- WXP 120
- WXP 200

Silver-Line Heating Technology

- WXP 80

### Accessories

WXHP 120  
Preheating plate

WXSBB 200  
Soldering bath

**NEW** WCU  
Temperature Measurement Device

**NEW** WX Air  
2-in-1 rework module with 2 channels: vacuum and air

**NEW** WHP 1000  
Preheating plate

WHP 3000  
Infrared preheating plate 600 W or 1200 W

**CONNECT**  
Maximum connectivity, supporting IoT standards for full traceability with mobile-enabled, easy remote control access.

**SMART**  
The all-in-one station acts as the brain of the workbench by consolidating all soldering applications into one station.

**SAFE**  
The first system with built-in cyber-security to prevent costly downtimes.

**CONTROL**  
Total Process Control (TPC) to manage your complete soldering process from tip to station.

### Hot Air Iron

WXHAP 200

### Desoldering Iron / Tweezers

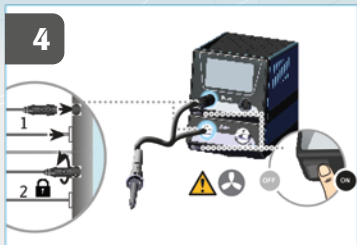
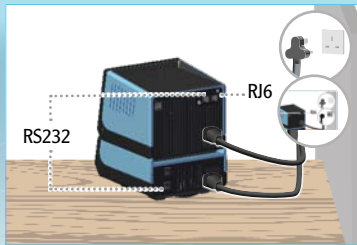
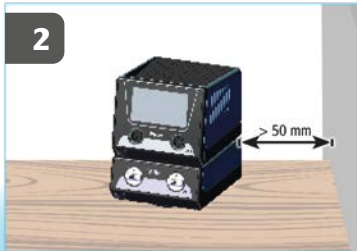
WXDP 120  
WXDV 120  
WXMT

### Fume extractions

- Zero Smog 4V
- Zero Smog 6V
- Zero Smog 20T
- WFV60A Stop valve 230V

# Weller® How to set-up?

# How to navigate?



1. Start



2. Choose Language



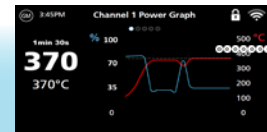
3. Standard Screen



Settings



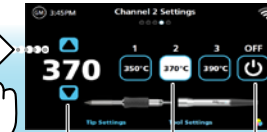
Real Time Powergraph



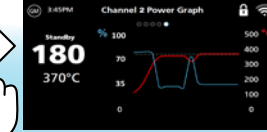
QuickTool Setting 1



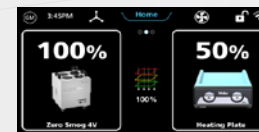
QuickTool Setting 2



Real Time Powergraph

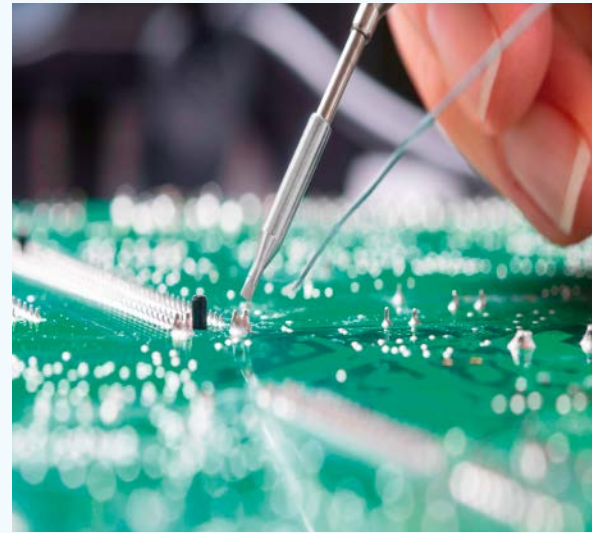


Benchtop Control





## Plan your own professional Workbench!



### 1 Choose your application Soldering, desoldering or hot air!



soldering  
→ go to 2

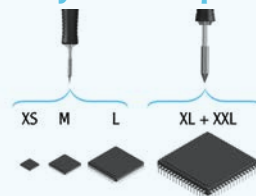


desoldering  
→ go to 4



hot air  
→ go to 4

### 2 Choose your solder pad size!



### 3 Find the right soldering tip!

Choose RTPS, RTMS or RTUS tip family and WXS tools (WXMPS MS or WXUPS MS)



No traceability?

Choose RTP, RTM or RTU tip family and WX tools WXPP, WXMP or WXUP iron

### 4 Choose your station!

total process control • Desoldering & Hot Air • good process control

**WXsmart** Soldering Station for total process control  
**WXair** Rework Modul for Desoldering & Hot Air Tasks  
**WX STATION** for good process control

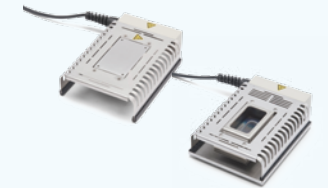


### 5 Do you need additional tools?

**PREHEATING PLATES**  
WHP80, WHP1000,  
WHP3000

**SOLDER BATHS**  
WXS B 200

**FILTRATION UNITS**  
Zero Smog 4V  
Zero Smog 6V



### 6 Do you need to deliver Calibration Protocols?

WCU - Weller Temperature measurement



### 7 Complete your workbench!

**TWEEZERS**  
for picking and placing components



**ESD MATS**



**CUTTERS**  
for cutting wires



**CLEANING TOOLS**



# Weller®

## SIMPLY CONTROL VIA SMART PHONE APP

### Test the intuitive **WXsmart** APP for total process control

Download the app on google play or app store and control your soldering process for multiple stations from one device like tablet or mobile phone fast and easy. This provides full control of the soldering process identifies wrong settings and failures easily.

- ✓ Transparent solder process
- ✓ Increased productivity
- ✓ Higher quality
- ✓ Saves time and total cost of ownership



#### GERMANY

Weller Tools GmbH  
Carl-Benz-Strasse 2  
74354 Besigheim

Tel: +49 (0)7143 580-0  
Fax: +49 (0)7143 580-108

#### CHINA

Apex Tool Group  
Room 302A, NO 177 Bibo Road  
Shanghai, 201202

Tel: +86 (21) 60880288  
Fax: +86 (21) 60880289

#### USA

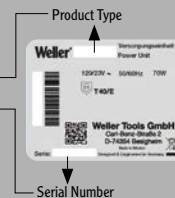
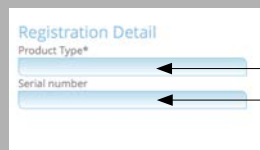
Apex Tool Group  
1000 Lufkin Road  
Apex, NC 27539

Tel +1 (833) 3170763  
Fax +1 (800) 546-7312  
CustomerCare@ApexToolGroup.com

#### UK

Apex tool Group (UK Operations) Limited  
Piccadilly, Tamworth  
Staffordshire B78 2ER

[www.weller-tools.com/registration](http://www.weller-tools.com/registration)



© 2022, Apex Tool Group, LLC.

Weller® is a registered Trademark and registered Design of Apex Tool Group, LLC.