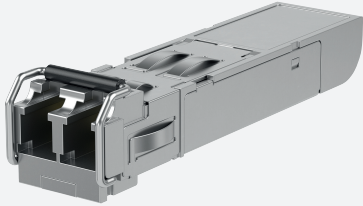


# SFP: 1000BASE-LX Gigabit Ethernet Single-mode Fiber Extended Temperature



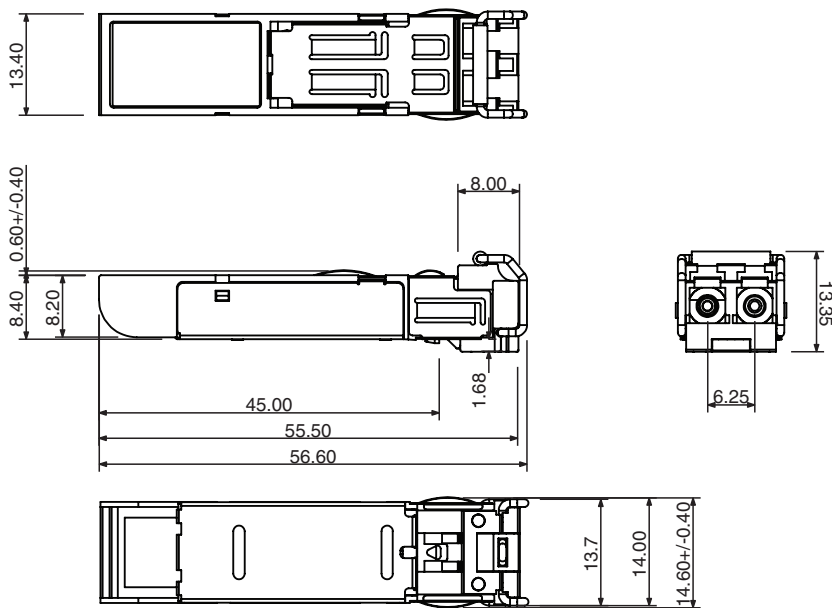
## SFP-S-30KM-G-W

- Industry standard small form pluggable (SFP) package
- SFP Multi-Source Agreement compliant
- Hot pluggable
- Class 1 laser product complies with EN 60825-1
- Single power supply 3.3V
- TTL signal detect indicator
- Duplex LC connector
- Extended temperature range: -40 to 85° C

Single-mode 30KM 1000BASE-LX Gigabit Ethernet Fiber SFP



### Dimensions



### Technical Data

#### Ethernet Interface

##### Standards

IEEE802.3z 1000BASE-LX	yes
------------------------	-----

#### Interface 1

Interface type	1000BASE-LX Gigabit Ethernet Fiber
Physical	SFP, Hot pluggable
Transfer rate	1.25 Gbps

#### Fiber optics functionality

Release date: 2021-06-02 Date of issue: 2021-06-02 Filename: 70116436\_eng.pdf

Refer to "General Notes Relating to Pepperl+Fuchs Product Information".

Pepperl+Fuchs Group  
www.pepperl-fuchs.com

USA: +1 330 486 0001  
fa-info@us.pepperl-fuchs.com

Germany: +49 621 776 1111  
fa-info@de.pepperl-fuchs.com

Singapore: +65 6779 9091  
fa-info@sg.pepperl-fuchs.com

PEPPERL+FUCHS

## Technical Data

Wave length	1310 nm
Cable type	9/125µm Single-mode
Cable length	max. 30 km
Connector type	1 Duplex LC
Transmit power (optical)	-4 ... 1 dBm
Receive sensitivity	-24 ... -3 dBm
Link budget	20 dBm
<b>Directive conformity</b>	
Electromagnetic compatibility	
Directive 2014/30/EU	EN55024, IEC 61000-4-2, IEC 61000-4-3, IEC 61000-4-4, IEC 61000-4-6, IEC 61000-4-8
<b>Standard conformity</b>	
Emitted interference	CISPR 22 , FCC Part 15 Subpart B Class A , EN61000-6-4, IEC61000-6-4
Noise immunity	EN 55024
Standards	SFP Multi-Source (MSA) compliant Class 1 laser product complies with EN 60825-1
<b>Ambient conditions</b>	
Ambient temperature	-40 ... 85 °C (-40 ... 185 °F)
Storage temperature	-40 ... 85 °C (-40 ... 185 °F)
Relative humidity	max. 95 %
<b>Mechanical specifications</b>	
Mass	17 g