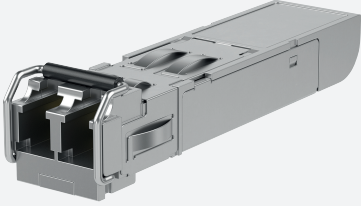


SFP 100BASE-FX Fast Ethernet Multimode Fiber

SFP-1



- 100BASE-FX Fast Ethernet multi-mode fiber SFP
- Certified for use with Ethernet-APL switches in Zone 2
- Class 1 laser product complies with EN 60825-1
- SFP Multi-Source Agreement compliant
- Ethernet link up to 2 km
- Duplex LC connector

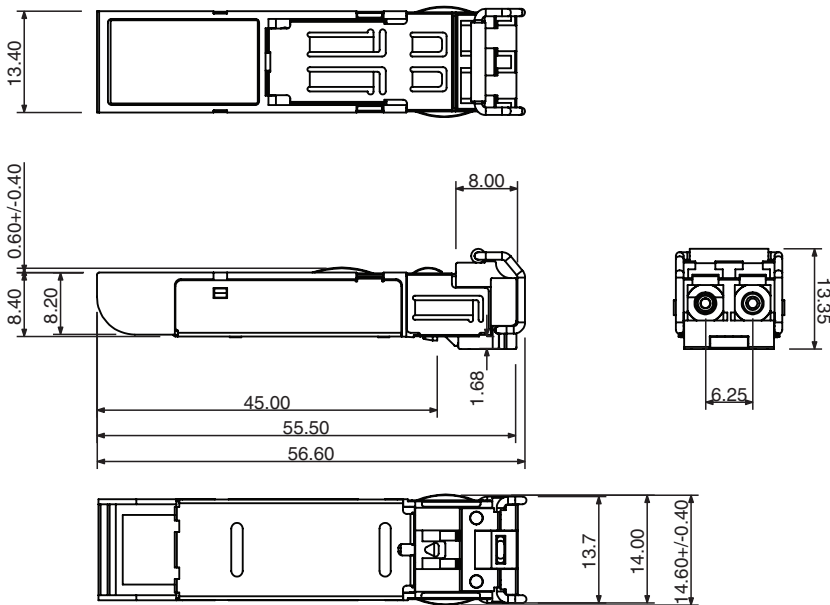
SFP Module Multimode, 2 KM, 100BASE-FX, SFP-1



Function

The SFP-1 is an industrial rated SFP module supporting 100 MBit/s fast Ethernet fiber-optical communication up to a link length of 2 km. The device is certified for installation in explosion hazardous area Zone 2 and is intended to be used with Pepperl+Fuchs Ethernet-APL switches.

Dimensions



Technical Data

Ethernet Interface

Interface type	100BASE-FX Fast Ethernet fiber
Connection type	duplex LC to duplex LC
Transfer rate	155 MBit/s
Fiber optics functionality	

Release date: 2022-04-22 Date of issue: 2022-04-22 Filename: 70125426_eng.pdf

Refer to "General Notes Relating to Pepperl+Fuchs Product Information".

Pepperl+Fuchs Group
www.pepperl-fuchs.com

USA: +1 330 486 0002
pa-info@us.pepperl-fuchs.com

Germany: +49 621 776 2222
pa-info@de.pepperl-fuchs.com

Singapore: +65 6779 9091
pa-info@sg.pepperl-fuchs.com

PEPPERL+FUCHS

Technical Data

Wave length	1310 nm
Cable type	50/125µm or 62.5/125µm multi-mode fiber optic
Cable length	max. 2 km
Connector type	1 Duplex LC
Transmit power (optical)	-20 ... 14 dBm
Receive sensitivity	-31 ... -8 dBm
Link budget	11 dBm
Directive conformity	
Electromagnetic compatibility	
Directive 2014/30/EU	EN 61326-1:2013
Conformity	
Electromagnetic compatibility	EN 61326 , NE 21
Ethernet	IEEE 802.3u for 100BASE-FX Fast Ethernet fiber
Shock resistance	EN 60068-2-27
Vibration resistance	EN 60068-2-6
Climatic conditions	DIN IEC 721
Laser safety	EN 60825-1 AEL Class 1
Ambient conditions	
Ambient temperature	-40 ... 85 °C (-40 ... 185 °F)
Storage temperature	-40 ... 85 °C (-40 ... 185 °F)
Relative humidity	≤ 95 % non-condensing
Shock resistance	15 g 11 ms
Vibration resistance	1 g 10 ... 150 Hz
Mechanical specifications	
Housing	SFP Multi-Source (MSA) compliant
Mass	17 g
Data for application in connection with hazardous areas	
EU-type examination certificate	TÜV 20 ATEX 8572 X
Marking	⊕ II 3 G Ex ec IIC T4 Gc
Directive conformity	
Directive 2014/34/EU	EN 60079-0:2018 , EN 60079-11:2012 , EN 60079-15:2015
International approvals	
IECEx approval	IECEx TUR 21.0013X
Approved for	Ex ec IIC T4 Gc
General information	
Supplementary information	Observe the certificates, declarations of conformity, instruction manuals, and manuals where applicable. For information see www.pepperl-fuchs.com .

Release date: 2022-04-22 Date of issue: 2022-04-22 Filename: 70125426_eng.pdf

Refer to "General Notes Relating to Pepperl+Fuchs Product Information".

Pepperl+Fuchs Group
www.pepperl-fuchs.com

USA: +1 330 486 0002
pa-info@us.pepperl-fuchs.com

Germany: +49 621 776 2222
pa-info@de.pepperl-fuchs.com

Singapore: +65 6779 9091
pa-info@sg.pepperl-fuchs.com

 **PEPPERL+FUCHS**