

Ⓞ Dismantling Instructions

Multi Functional Table Lamp

Item no: 2637995

1 Dismantling recommendations

- Disconnect from power supply.
- Ask help from a professional if needed.

2 Dismantling instructions

Step 1

Place the lamp body on the working surface.



Step 2

Pull out the lampshade section.



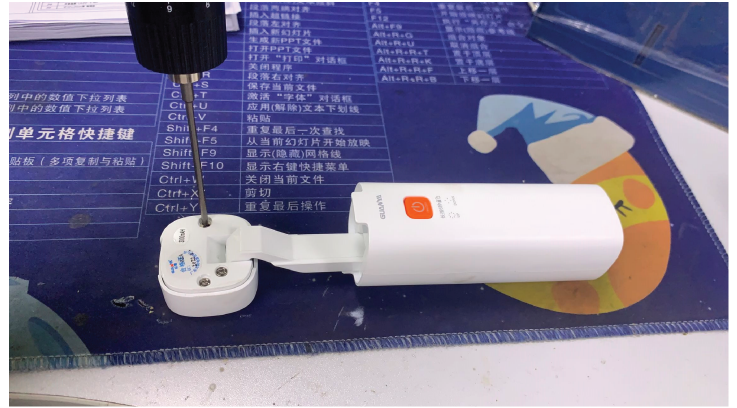
Step 3

Remove the silicone pads covering the screws.



Step 4

Use a cross-head screwdriver to remove all the lampshade retention screws.



Step 5

Desolder the light plate from the single line.



This is a publication by Conrad Electronic SE, Klaus-Conrad-Str. 1, D-92240 Hirschau (www.conrad.com).

All rights including translation reserved. Reproduction by any method (e.g. photocopying, microfilming or the capture in electronic data processing systems) requires prior written approval from the editor. Reprinting, also in part, is prohibited. This publication reflects the technical status at the time of printing.

Copyright by Conrad Electronic SE.

*2637995_V1_0323_hs_en 815550859 I1/O1 en