



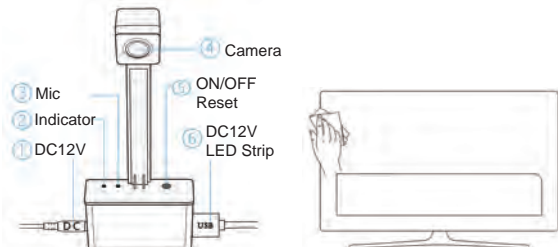
TV LED Backlight with Camera

User Manual

Delivery contents:

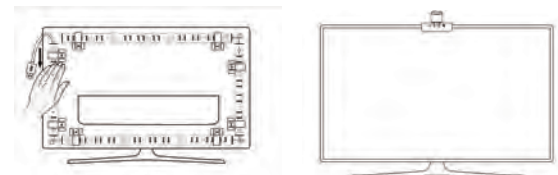
- 1x LED light strip
- 1x Camera
- 1x Adaptor
- 8x mounting clips
- 1x user manual

Interface introduction and installation



Introduction of the device

Clear the back surface of the TV



Stick the mounting clips and install the LED

Stick the camera on TV as above

1. Download the APP

Search for Tuya Smart in APP store or Google Play or Scan the QR Code below to download.



Scan QR Code to download

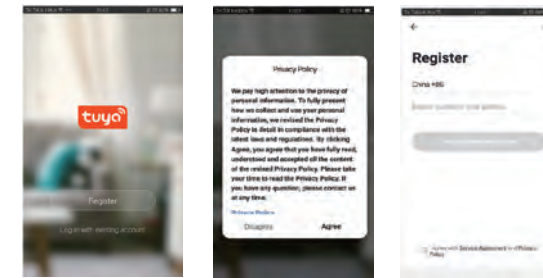


IOS
Android

2. Register/Log in with existing account

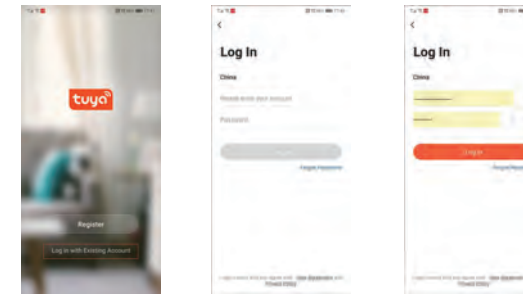
2.1.Register

If you do not possess an account, you may register for one. To do so, select the option "Create New Account," and read the Privacy Policy on the APP. Afterward, click "Agree" to proceed to the registration page. Please note that registration is only available for mobile numbers in China. If you are not a China mobile user, you can opt to register using your email address. A verification code will be sent to your email, which you will require to complete the registration.



2.2. Login with existing account

If you already have an account, select "Log in with existing account." The system will automatically select the current Country/Region, or you can manually select the Country/Region. Then, input your registered mobile number or email address, along with your account password to log in to the APP.



3. Add devices

3.1. AP Mode (Blink Slowly)

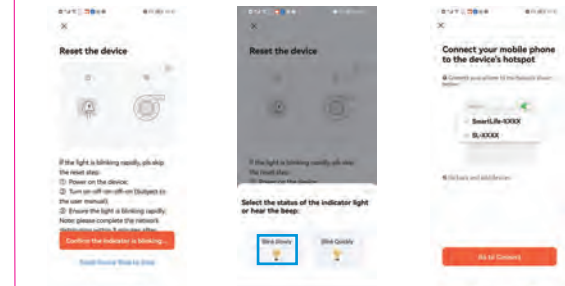
Tips: The devices solely function with 2.4GHz wifi and not with 5GHz wifi. The WiFi password must not contain any special characters, such as !@#%&^*(), during configuration. To ensure optimal configuration, please place your phone and devices as close as possible.



Tap "+" or "Add Device" to add device

Tap "Lighting" - Camera Screen Sync Controller

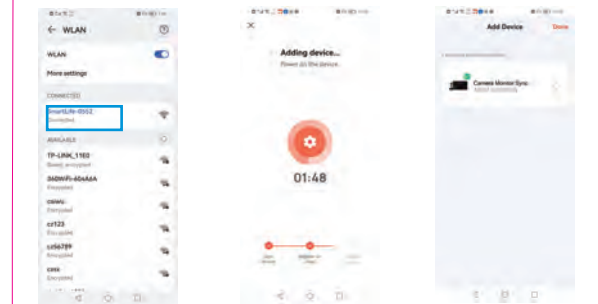
Enter WiFi name and password Tap next step



Power on the device and follow the steps on the page

Choose Blink Slowly

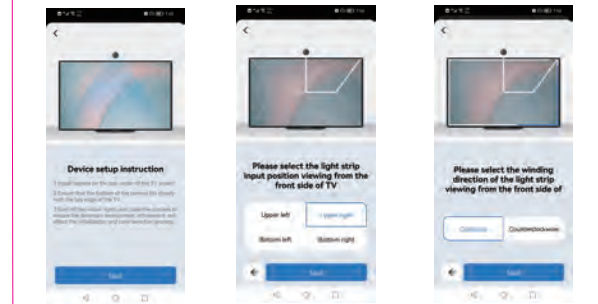
Go to device hotspot page



Find the device's Wi-Fi and back to the App for adding device

The device will connect to the Wi-Fi

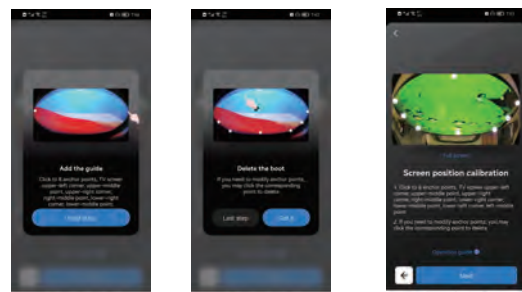
Device add successfully



Select the camera installation Location

Select the light strip input position of the screen

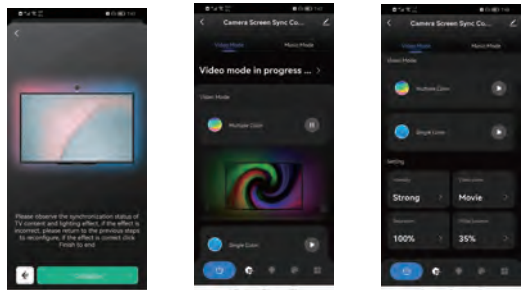
Select the winding direction of the light strip on screen



Please turn off the power of the screen and keep it black

Turn on the power of the screen keep the display status

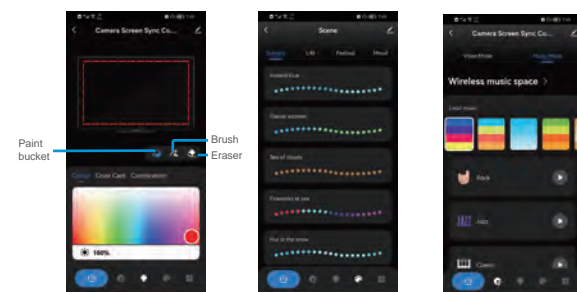
Confirm if the effect is as expected and finish the settings



Set scene mode function

Set scene mode function

Select music mode

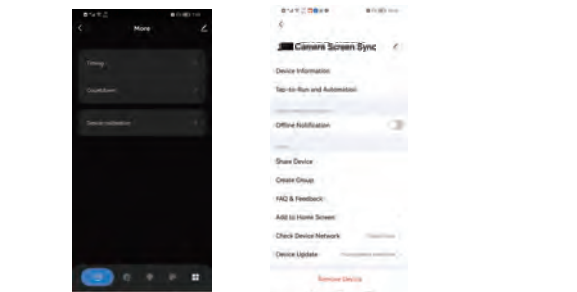


Color Selection

Set the scenery

Set function

Paint Bucket: Could select the color for all the LED strip
Brush: Add back the light been Eraser: Delete the light of the strip



Product Settings

3.2. EZ Mode (Blink Quickly)

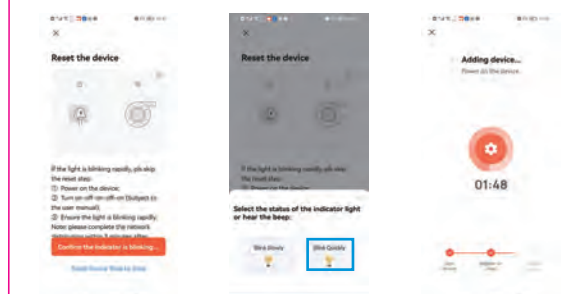
Tips: The devices only support 2.4GHz wifi currently not 5GHz wifi. And the WiFi password should not contain any special characters eg. !@#%&^*() when configuring please put your phone and devices as closer as possible.



Tap "+" or "Add Device" to add device

Tap "Lighting" - Camera Screen Sync Controller

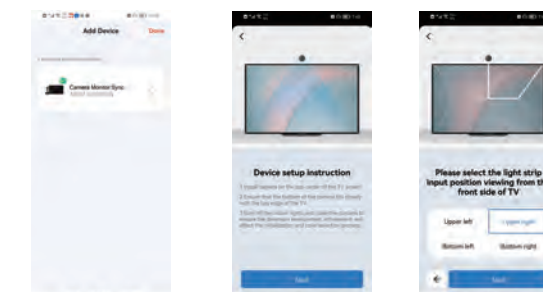
Input WiFi name and password Tap next step



Power on the device and follow the steps on the page

Choose Blink Quickly

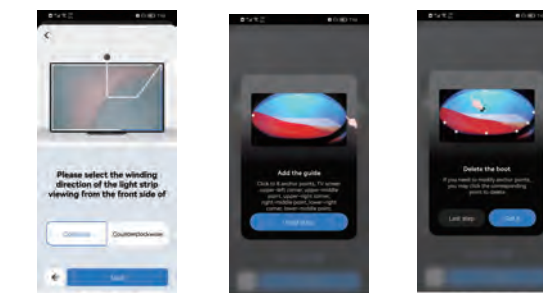
The device will connect to the router



Device add successfully

Select the camera installation Location

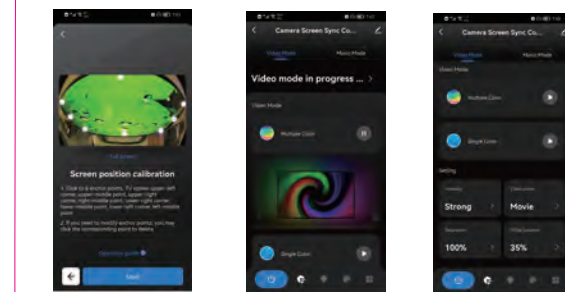
Select the light strip input position of the screen



Select the winding direction of the light strip on screen

Please turn off the power of the screen keep the display status

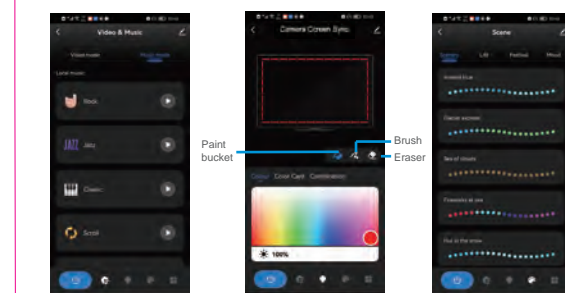
Turn on the power of the screen keep the display status



Confirm if the effect is as expected and finish the settings

Set scene mode function

Set scene mode function

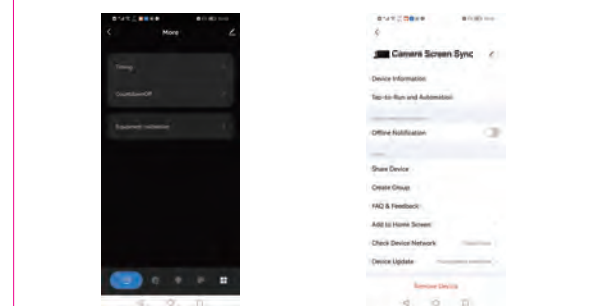


Select music mode

Color Selection

Set the scenery

Paint Bucket: Could select the color for all the LED strip
Brush: Add back the light been Eraser: Delete the light of the strip



Set function

Product Settings

4. FAQ

- Q1: How can I reset the device to its factory settings?**
A1: You can either delete the device directly from your app list or press and hold the reset button for 8 seconds to remove it.
- Q2: Why can't I connect the device successfully?**
A2: a. Please ensure that the device is powered on and that the network is functioning well.
b. Try re-plugging the device and restarting.
c. Reset the device and add it again as per the user manual.
- Q3: Why is the color not being controlled as expected?**
A3: a. Ensure that the light strip is plugged into the USB port.
b. Try re-plugging the device and restarting.
c. Reset the device and add it again.