

SL1R033JT ✓ ACTIVE

CGS | CGS SMD

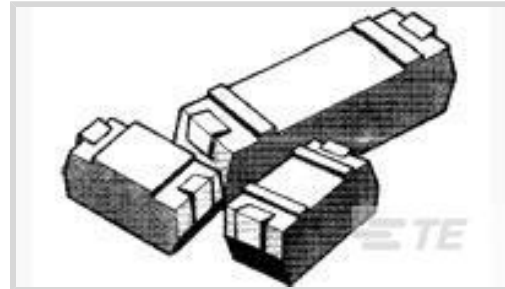
TE Internal #: 1624256-1

Surface Mount Resistors, Low Ohmic Resistor, 2 Termination,  
Taped & Reeled, 5 %, Foil, Resistance Class Up to 1k $\Omega$ , .033  $\Omega$ , 1 W,  
 $\pm 100$  ppm/ $^{\circ}\text{C}$ , CGS SMD

[View on TE.com >](#)



Passive Components > Resistors > Surface Mount Resistors



Resistor Type: **Low Ohmic Resistor**

Number of Terminations: **2**

Packaging Method: **Taped & Reeled**

Passive Component Tolerance: **5 %**

Element Type: **Foil**

## Features

### Product Type Features

Product Type	Fixed Resistor
Resistor Type	Low Ohmic Resistor
Element Type	Foil

### Configuration Features

Number of Resistors	1
---------------------	---

### Electrical Characteristics

Passive Component Tolerance	5 %
Resistance Class	Up to 1k $\Omega$
Resistance Value	.033 $\Omega$
Power Rating	1 W

### Termination Features

Number of Terminations	2
Surface Mount Resistor Termination Type	Solder

### Dimensions

Passive Component Dimensions	6.48 x 3.81 x 2.84 mm
------------------------------	-----------------------

### Usage Conditions

Temperature Coefficient	$\pm 100$ ppm/ $^{\circ}\text{C}$
-------------------------	-----------------------------------



### Packaging Features

Packaging Method	Taped & Reeled
------------------	----------------

### Product Compliance

[For compliance documentation, visit the product page on TE.com>](#)

EU RoHS Directive 2011/65/EU	Compliant
EU ELV Directive 2000/53/EC	Compliant
China RoHS 2 Directive MIIT Order No 32, 2016	No Restricted Materials Above Threshold
EU REACH Regulation (EC) No. 1907/2006	Current ECHA Candidate List: JUNE 2022 (224) Candidate List Declared Against: JUNE 2022 (224) Does not contain REACH SVHC
Halogen Content	Low Halogen - Br, Cl, F, I < 900 ppm per homogenous material. Also BFR/CFR/PVC Free
Solder Process Capability	Reflow solder capable to 260°C

#### Product Compliance Disclaimer

This information is provided based on reasonable inquiry of our suppliers and represents our current actual knowledge based on the information they provided. This information is subject to change. The part numbers that TE has identified as EU RoHS compliant have a maximum concentration of 0.1% by weight in homogenous materials for lead, hexavalent chromium, mercury, PBB, PBDE, DBP, BBP, DEHP, DIBP, and 0.01% for cadmium, or qualify for an exemption to these limits as defined in the Annexes of Directive 2011/65/EU (RoHS2). Finished electrical and electronic equipment products will be CE marked as required by Directive 2011/65/EU. Components may not be CE marked. Additionally, the part numbers that TE has identified as EU ELV compliant have a maximum concentration of 0.1% by weight in homogenous materials for lead, hexavalent chromium, and mercury, and 0.01% for cadmium, or qualify for an exemption to these limits as defined in the Annexes of Directive 2000/53/EC (ELV). Regarding the REACH Regulation, the information TE provides on SVHC in articles for this part number is based on the latest European Chemicals Agency (ECHA) 'Guidance on requirements for substances in articles' posted at this URL: <https://echa.europa.eu/guidance-documents/guidance-on-reach>

### Compatible Parts






TE Part # 1624250-5  
CGS SL1 R033 5% TAPED



TE Part # 1624250-7  
CGS SL1 R051 5% TAPED



TE Part # 1624262-2  
SL1 R068 5% TAPED



TE Part # 1-1624250-6  
CGS SL2 R068 5% TAPED



TE Part # 1624253-2  
SL1 R01 5% TAPED



TE Part # 1624254-2  
SL1 R022 1% TAPED



TE Part # 1624260-1  
SL1 R05 5% TAPED



TE Part # 1624265-2  
SL1 R10 5% TAPED



TE Part # 1624250-2  
CGS SL1 R015 5% TAPED



TE Part # 1624250-8  
CGS SL1 R068 5% TAPED



TE Part # 1-1624250-0  
CGS SL2 R015 5% TAPED



TE Part # 1-1624250-1  
CGS SL2 R01 5% TAPED



TE Part # 1-1624250-2  
CGS SL2 R022 5% TAPED



TE Part # 1-1624250-3  
CGS SL2 R033 5% TAPED

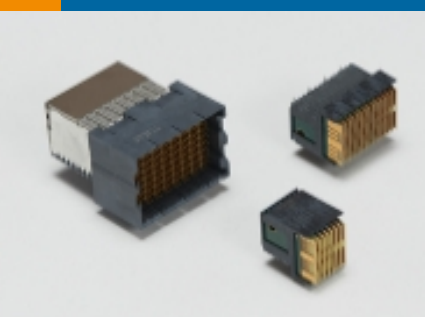


TE Part # 1-1624250-4  
CGS SL2 R047 5% TAPED




TE Part # 1-1624250-5  
CGS SL2 R051 5% TAPED

Also in the Series | CGS SMD

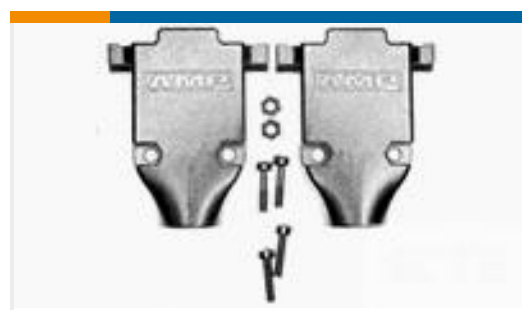


High Speed Backplane Connectors(1)



Surface Mount Resistors(35)

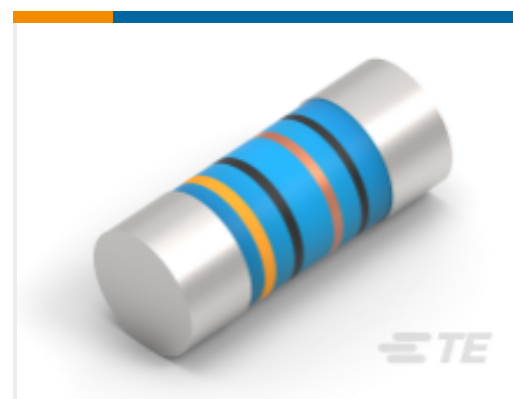
Customers Also Bought



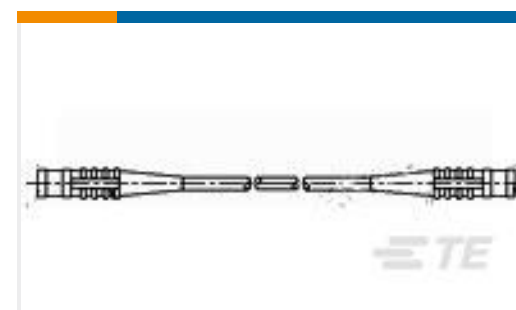
TE Part #5747099-7  
CABLE CLAMP KIT,SZ 2



TE Part #1776293-6  
TSB23006DS=EUROPA TERM BLK,  
8MM



TE Part #2176334-8  
MELF SMA-A R36 1% 50PPM 0204 0.4  
W



TE Part #1337815-3  
50 OHM COAX SMB STR PLUG STR P

## Documents

### CAD Files

3D PDF

3D

Customer View Model

[ENG\\_CVM\\_CVM\\_1624256-1\\_BA.2d\\_dxf.zip](#)

English

Customer View Model

[ENG\\_CVM\\_CVM\\_1624256-1\\_BA.3d\\_igs.zip](#)

English

Customer View Model

[ENG\\_CVM\\_CVM\\_1624256-1\\_BA.3d\\_stp.zip](#)

English

By downloading the CAD file I accept and agree to the [Terms and Conditions](#) of use.

### Datasheets & Catalog Pages

[1309350\\_PASSIVE\\_COMPONENT](#)

English

[SMD Precision Current Sense Resistor - Type S Series - Tyco Electronics Passives](#)

English

[8-1773459-4\\_POWER\\_FILTERING\\_AND\\_RESISTIVE\\_SOLUTIONS\\_FOR\\_ELEVATORS\\_AND\\_ESCALATORS](#)

English