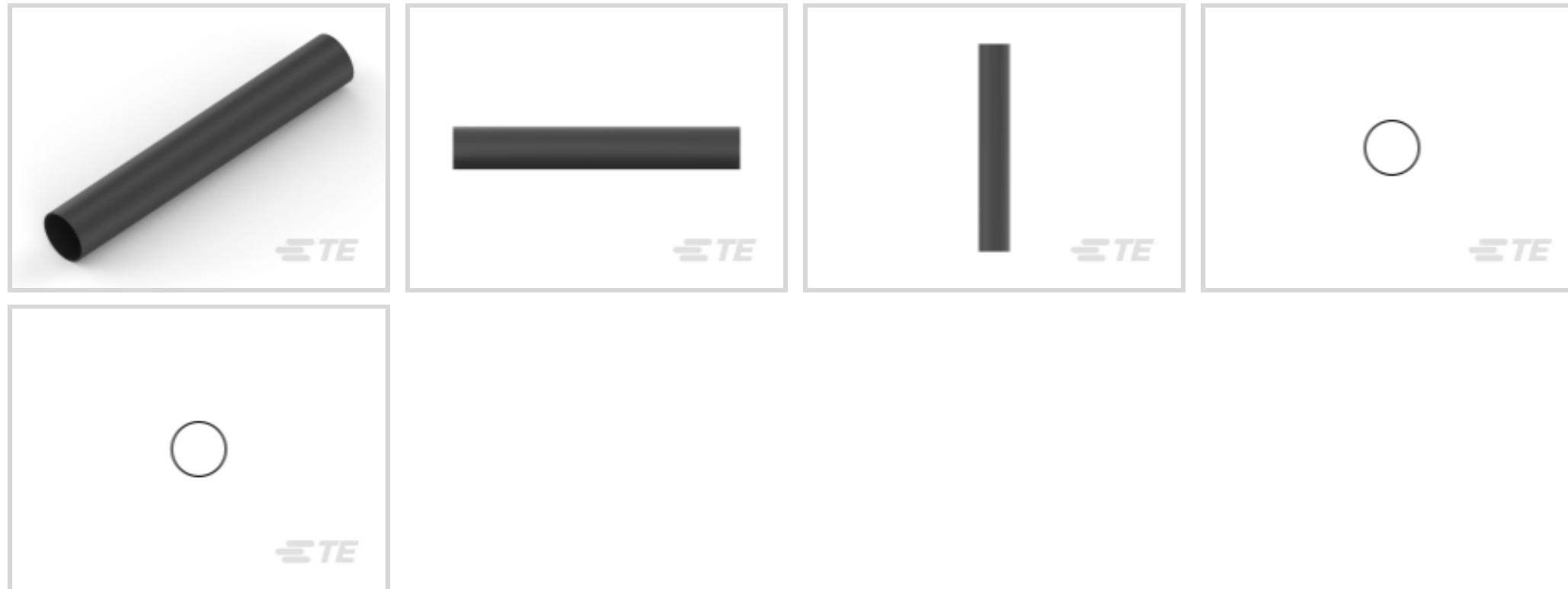




Heat Shrink Tubing



Primary Product Color: **Black**

Wall Type: **Dual**

Expanded Inside Diameter (Min): **40 mm [1.57 in]**

Recovered Inside Diameter (Max): **13 mm [.512 in]**

Shrink Ratio: **3:1**

Features

Product Type Features

Product Family	ATUM
Wall Type	Dual

Electrical Characteristics

Voltage (Max)	.6 kV
---------------	-------

Body Features

Fluid Type	Aviation Fuel, Chemicals/Solvents, De-Icing Fluid, Diesel Fuel, Hydraulic Fluid, Lubricating Oil
Primary Product Color	Black
Shrink Ratio	3:1
Primary Product Material	Irradiated Modified Polyolefin
Flexibility	Semi-Flexible

Dimensions

Recovered Wall Thickness (Tolerance)	.55 mm[.022 in]
--------------------------------------	-----------------



Recovered Wall Thickness (Nominal)	2.54 mm[.1 in]
Expanded Inside Diameter (Min)	40 mm[1.57 in]
Recovered Inside Diameter (Max)	13 mm[.512 in]
Heat Shrink Tubing Size Range	13 – 40 mm[.51 – 1.57 in]

Usage Conditions

Shrink Temperature (Min)	80 °C
Fluid Resistance	Moisture, Splash Protection, Spray Protection
Heat Shrink Tubing Flammability	Flame-Retardant
Operating Temperature Range	-55 – 110 °C
Heat Shrink Tubing Resistance	Fluids, Mechanical Damage
Recovery Temperature	110 °C

Product Availability

Applicable Region	Global
-------------------	--------

Packaging Features

Packaging Method	Reel
------------------	------

Other

Meets Low Outgassing Requirements	No
Product Source	Czech Republic

Product Compliance

[For compliance documentation, visit the product page on TE.com>](#)

EU RoHS Directive 2011/65/EU	Compliant
EU ELV Directive 2000/53/EC	Compliant
China RoHS 2 Directive MIIT Order No 32, 2016	No Restricted Materials Above Threshold
EU REACH Regulation (EC) No. 1907/2006	Current ECHA Candidate List: JUNE 2022 (224) Candidate List Declared Against: JUNE 2022 (224) SVHC > Threshold: DBMC (1.51% in Component Part) Article Safe Usage Statements: Wash thoroughly after handling. Do not handle until all safety precautions have been read and understood. Recycle if possible and dispose of the article by following all applicable governmental regulations relevant to your geographic location.
Halogen Content	Not Low Halogen - contains Br or Cl > 900 ppm.



Solder Process Capability

Not applicable for solder process capability

Product Compliance Disclaimer

This information is provided based on reasonable inquiry of our suppliers and represents our current actual knowledge based on the information they provided. This information is subject to change. The part numbers that TE has identified as EU RoHS compliant have a maximum concentration of 0.1% by weight in homogenous materials for lead, hexavalent chromium, mercury, PBB, PBDE, DBP, BBP, DEHP, DIBP, and 0.01% for cadmium, or qualify for an exemption to these limits as defined in the Annexes of Directive 2011/65/EU (RoHS2). Finished electrical and electronic equipment products will be CE marked as required by Directive 2011/65/EU. Components may not be CE marked. Additionally, the part numbers that TE has identified as EU ELV compliant have a maximum concentration of 0.1% by weight in homogenous materials for lead, hexavalent chromium, and mercury, and 0.01% for cadmium, or qualify for an exemption to these limits as defined in the Annexes of Directive 2000/53/EC (ELV). Regarding the REACH Regulation, the information TE provides on SVHC in articles for this part number is based on the latest European Chemicals Agency (ECHA) 'Guidance on requirements for substances in articles' posted at this URL: <https://echa.europa.eu/guidance-documents/guidance-on-reach>

Compatible Parts



TE Part # CJ2087-000
HL2010E-KIT-120V



TE Part # EG1114-000
CV1981-ST-230V1600W-EU

Also in the Series | RAYCHEM ATUM



Heat Shrink Tubing(262)

Customers Also Bought



TE Part #1393258-2
V23047-A1005-A501



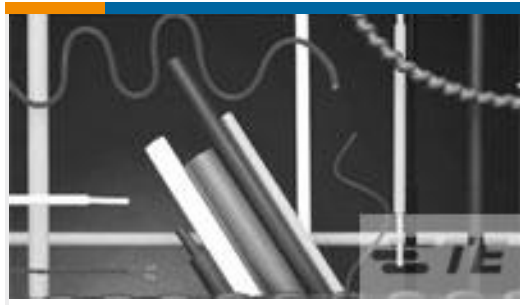
TE Part #796275-000
CWT-13



TE Part #F670223001
RAY-90-10.0(100)



TE Part #4426612006
RAYRIM-NR9-0-STK



TE Part #4431574001
GPO-135-4.8/2.4-0-SP



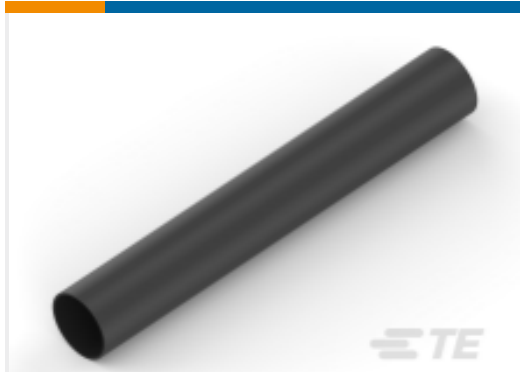
TE Part #NB10026001
ATUM-24/6-0-40MM



TE Part #NB10784001
ATUM-32/8-0-SP



TE Part #NB09486001
ATUM-16/4-0-80MM



TE Part #NB10726001
ATUM-32/8-0-60MM



TE Part #EP29076001
ATUM-16/4-0-60MM

Documents

Product Drawings

[ATUM-40/13-0-SP](#)

English

Datasheets & Catalog Pages

[ATUM Pages from 9-1773447-9](#)

English

Product Specifications

[Quality Specification](#)

English