

MICRO SWITCH
 FREEPORT, ILLINOIS, U.S.A.
 A DIVISION OF HONEYWELL
 FED. MFG. CODE 91929

SWITCH - ENCLOSED

CATALOG LISTING
31EN10-6

M 31EN10-6

DRAWING NUMBER

ISSUE 26

REPLACES PR-5292

CHECK

CHECK

CHECK

CHECK

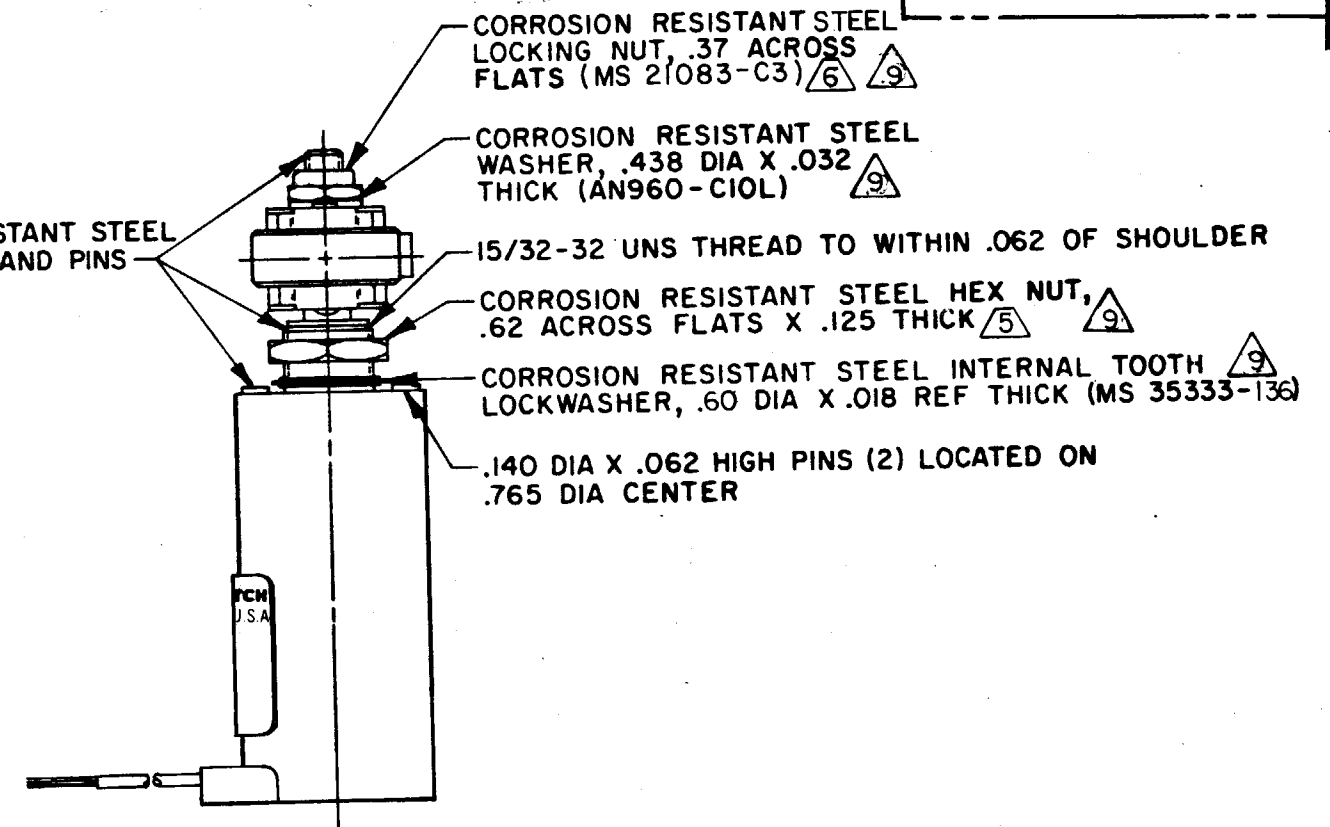
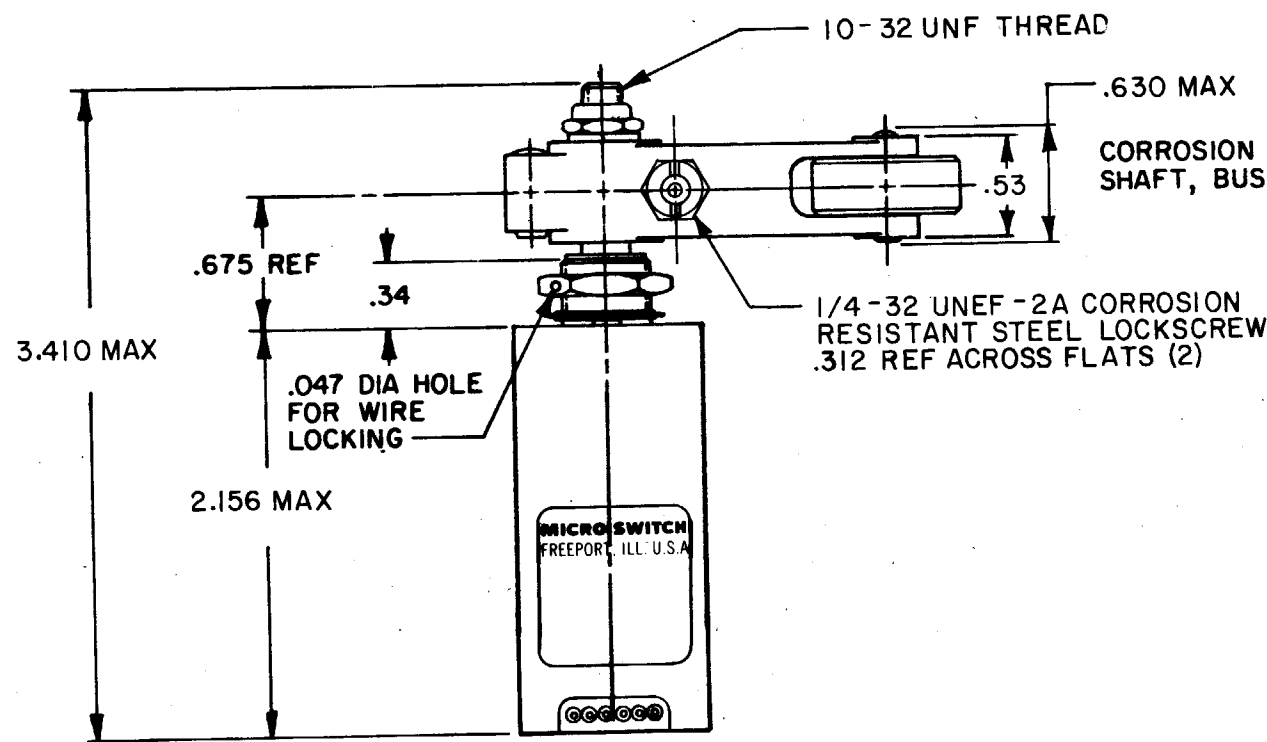
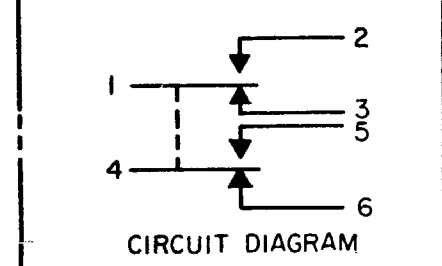
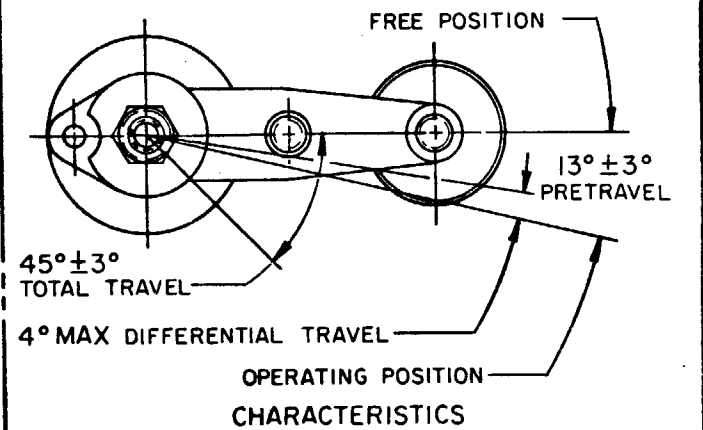
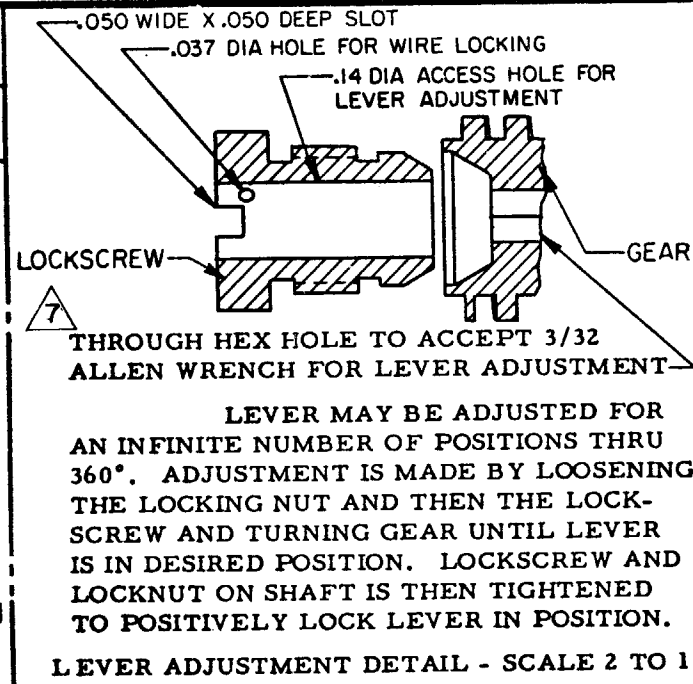
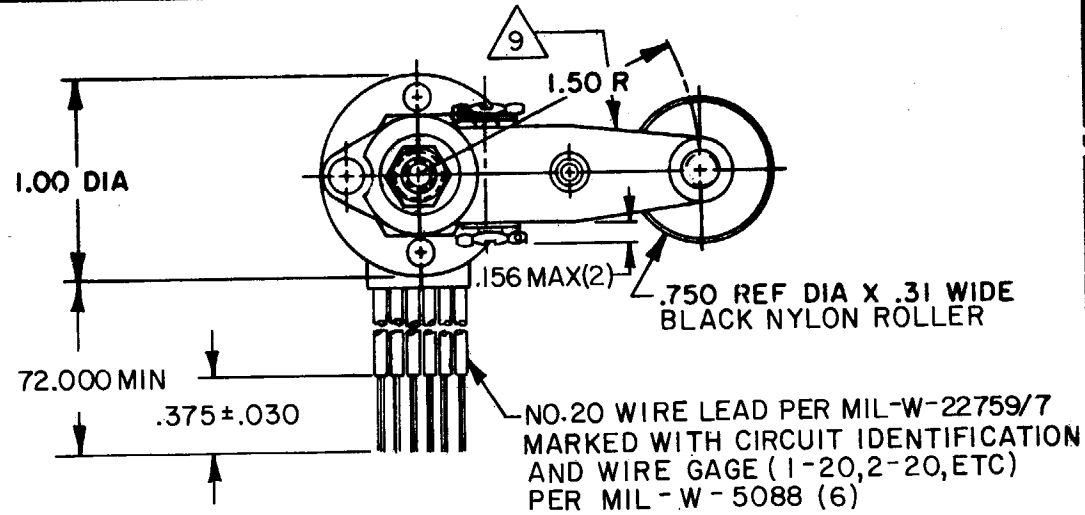
CHECK

CHECK

CHECK

CHECK

CHECK



REVISIONS	
A	CO-4435 KAK 1 JAN 80
B	CO47573 Y-S M 11 AUG 80
C	CO498060 KAG 28 SEP 81
D	CO 57370 WJM 14 MAY 85
E	CO757870 DAW 10 MAY 94

THIS DRAWING COVERS A PROPRIETARY ITEM AND IS THE PROPERTY OF MICRO SWITCH, A DIVISION OF HONEYWELL. THIS DRAWING IS NOT TO BE COPIED OR USED WITHOUT THE APPROVAL OF MICRO SWITCH.

CHARACTERISTICS	
OPERATING TORQUE	12-25 IN LB
RELEASE TORQUE	9 IN LB MIN
PRETRAVEL	SEE DETAIL
DIFFERENTIAL TRAVEL	
OVERTRAVEL	
FREE POSITION	

ELECTRICAL DATA		
CONTACT ARRANGEMENT S P D T (2)		
LOAD	28 VDC	
		SEA LEVEL
RES	5	5
IND	3	2
MOTOR	4	
LAMP		

SCALE FULL			
DO NOT SCALE PRINT			
TOLERANCES			
APPLY TO DESIGN UNITS. CONVERSIONS ARE ONLY FOR REFERENCE. UNLESS NOTED, TOLERANCES ARE 2			
NO PLACES	DIM.	TOL.	DIM.
ONE PLACE	IN	12/100	MM
TWO PLACES	IN, XX	0.47/018	MM, XX
THREE PLACES	IN, XXX	0.187/009	MM, XXX
ANGLES			
DESIGN UNITS		SI METRIC	US CUSTOMARY
		<input type="checkbox"/>	<input checked="" type="checkbox"/>
THIRD ANGLE PROJECTION			
WEIGHT 9.5 OZ MAX			

- NOTES
- 1 - CORROSION RESISTANT STEEL ENCLOSURE
 - 2 - SWITCH SEALED PER MIL-S-8805 SYMBOL 4
 - 3 - CIRCUIT DIAGRAM AND CAT. LIST. ARE SHOWN ON NAMEPLATE
 - 4 - TOTAL TRAVEL OF ROLLER LEVER IS 45° ± 3° IN CLOCKWISE DIRECTION ONLY WITH SPRING RETURN TO NEUTRAL
 - 5 - REPLACEMENT MOUNTING HARDWARE PACKET 19PA10
 - 6 - DO NOT APPLY MORE THAN 20-25 INCH-POUNDS OF TORQUE WHEN TIGHTENING LOCKING NUT
 - 7 - WORM GEAR TO TURN WITH 6 IN-LB MAX TORQUE WITH SCREWS LOCKED OUT TIGHT
 - 8 - REPLACEMENT LEVER 6PA351
 - 9 - HARDWARE MAY BE PACKAGED UNASSEMBLED PER MIL-S-8805

FO-82851-B

DRAWN

KAK 8 JAN 80

CHECK

CHECK

CHECK

CHECK

CHECK

CHECK

CHECK

CHECK