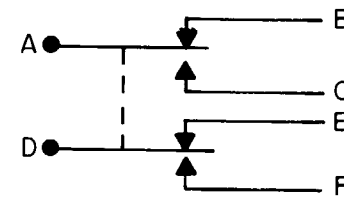


**MICRO SWITCH**  
 FREEPORT, ILLINOIS U.S.A.  
 A DIVISION OF HONEYWELL  
 FED. MFG. CODE 91929

**SWITCH—ENCLOSED**

CATALOG LISTING  
**1EN75-R6**



CIRCUIT DIAGRAM

Furnished under United States Government Contract No. \_\_\_\_\_  
 Shall not be either released outside the Government, or used, duplicated or disclosed in whole or in part for manufacture or procurement, without the written permission of MICRO SWITCH, A Division of Honeywell, except for: (I) emergency repair or overhaul work by or for the Government, where the item or process concerned is not otherwise reasonably available to enable timely performance of the work; or (II) release to a foreign government, as the interests of the United States may require; provided that in either case the release, use, duplication or disclosure hereof shall be marked on any reproduction hereof in whole or in part.

1EN75-R6

M

DRAWING NUMBER

ISSUE

2

REVISIONS

A PR-14721  
 J A P  
 18 MAY 86

CHECK

G L L

20 MAY 86

CHECK

K A G

20 MAY 86

CHECK

G L L

20 MAY 86

CHECK

K A G

20 MAY 86

CHECK

K A G

20 MAY 86

CHECK

K A G

20 MAY 86

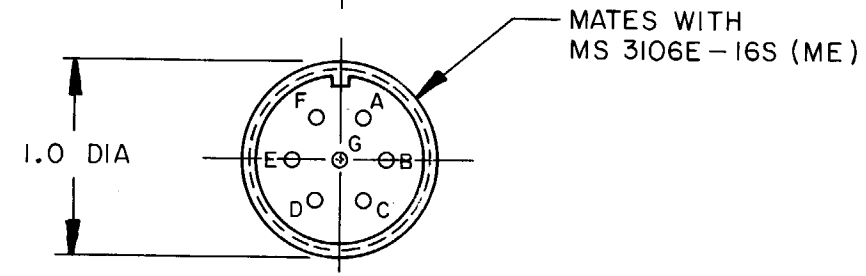
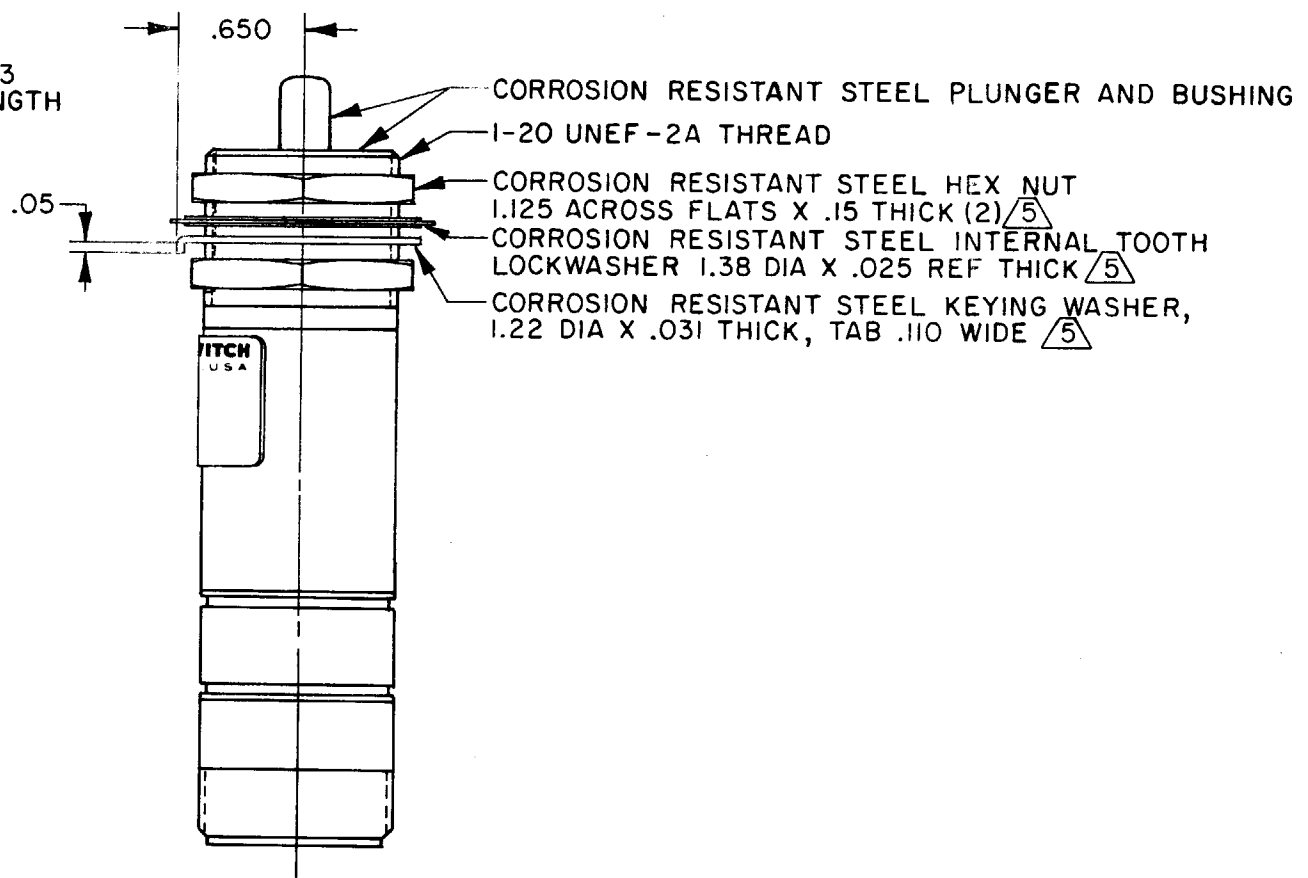
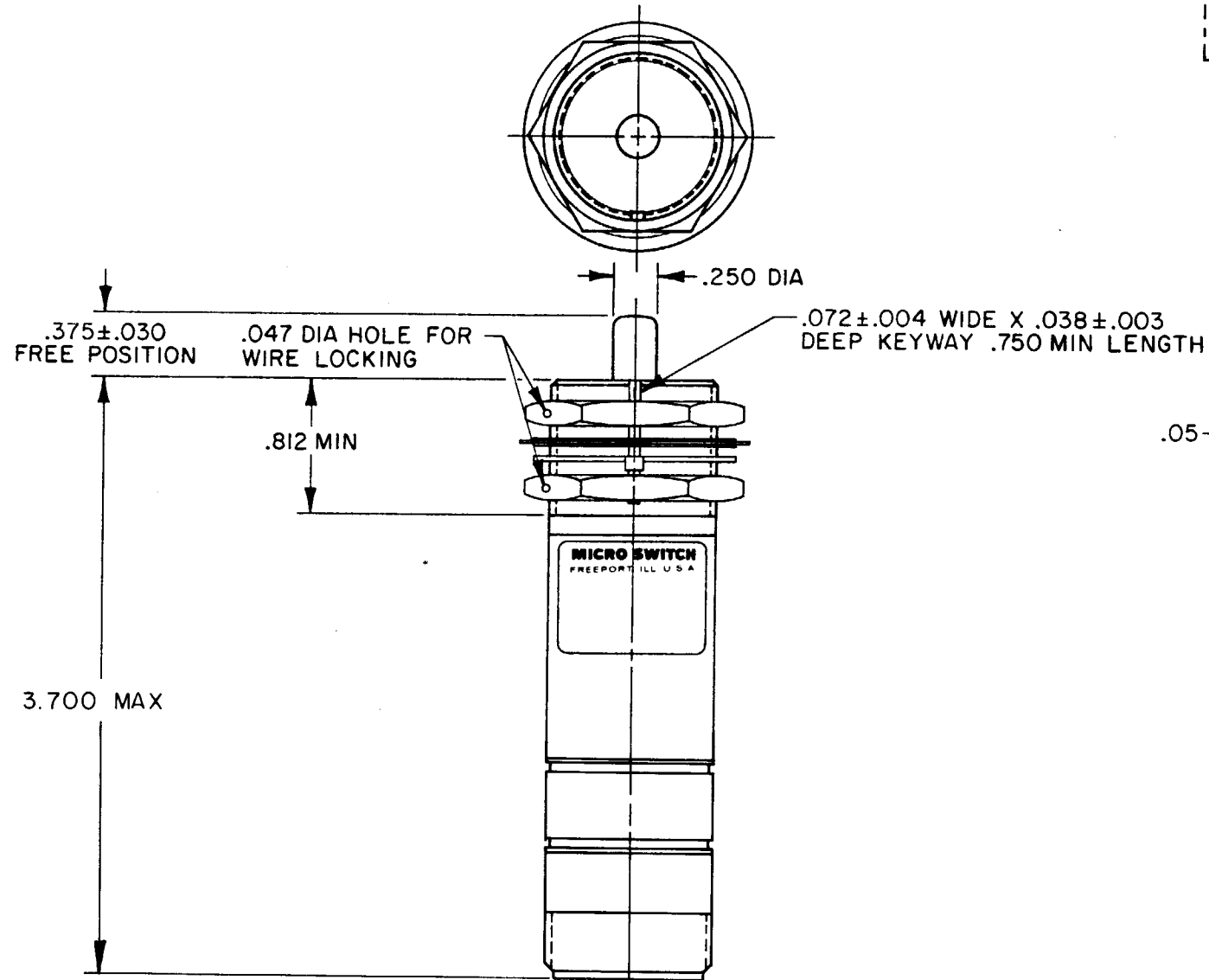
CHECK

K A G

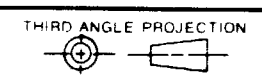
20 MAY 86

FO-52851-A

DRAWN



THIS DRAWING COVERS A PROPRIETARY ITEM AND IS THE PROPERTY OF MICRO SWITCH, A DIVISION OF HONEYWELL. THIS DRAWING IS NOT TO BE COPIED OR USED WITHOUT THE APPROVAL OF MICRO SWITCH.



SCALE FULL  
 DO NOT SCALE PRINT

| CHARACTERISTICS       |           |
|-----------------------|-----------|
| OPERATING FORCE       | 6-12 LB   |
| FULL OVERTRAVEL FORCE | 30 LB MAX |
| RELEASE FORCE         | 4 LB MIN  |
| PRETRAVEL             | .040 MAX  |
| DIFFERENTIAL TRAVEL   | .020 MAX  |
| OVERTRAVEL            | .250 MIN  |

| ELECTRICAL DATA     |            |
|---------------------|------------|
| CONTACT ARRANGEMENT |            |
| S P D T (2)         |            |
| LOAD                |            |
| 28 VDC              |            |
| RES                 | 5          |
| IND                 | 3          |
| MOTOR               | 4          |
| SEA LEVEL           | 50,000 FT. |

| TOLERANCES  |         |                          |                                     |
|---|---------|--------------------------|-------------------------------------|
| APPLY TO DESIGN UNITS. CONVERSIONS ARE ONLY FOR REFERENCE. UNLESS NOTED, TOLERANCES ARE ± |         |                          |                                     |
| DIM.  | TOL.    | DIM.                     | TOL.                                |
| mm  | mm/in   | in                       | mm/in                               |
| NO PLACES   | X       | 1/64                     | X X                                 |
| ONE PLACE   | X X     | 0.4/0.18                 | X X X                               |
| TWO PLACES  | X X X   | 0.15/0.06                | X X X X                             |
| THREE PLACES  | X X X X | 0.13/0.05                | X X X X X                           |
| ANGLES  |         |                          |                                     |
| DESIGN UNITS  |         | SI METRIC                | US CUSTOMARY                        |
|   |         | <input type="checkbox"/> | <input checked="" type="checkbox"/> |
| RAW MATERIAL—COMMERCIAL STANDARD  |         |                          |                                     |
| MICRO SWITCH STANDARDS APPLY  |         |                          |                                     |
| DIMENSIONS ARE TO BE MET BEFORE PROTECTIVE COATINGS ARE APPLIED                           |         |                          |                                     |
| WEIGHT 7.0 OZ MAX   |         |                          |                                     |

- NOTES
- 1 - CORROSION RESISTANT STEEL ENCLOSURE
  - 2 - SWITCH SEALED PER MIL-S-8805 SYMBOL 4
  - 3 - CIRCUIT DIAGRAM AND CATALOG LISTING ARE SHOWN ON NAMEPLATE
  - 4 - COINCIDENCE OF OPERATING AND RELEASING POINTS: .010 INCH OF PLUNGER TRAVEL
- 5 HARDWARE MAY BE PACKAGED UNASSEMBLED PER MIL-S-8805