

MICRO SWITCH

A DIVISION OF MINNEAPOLIS-HONEYWELL REGULATOR COMPANY
PHENIX, MASSACHUSETTS

FED. MFR. CODE 91929

SWITCH - BASIC

CATALOG LISTING

1HS104

S

1HS104

M

DRAWING NUMBER

ISSUE

REPLACES

RELEASE NO. SR 10464

CHECK

REVISIONS

CHECK

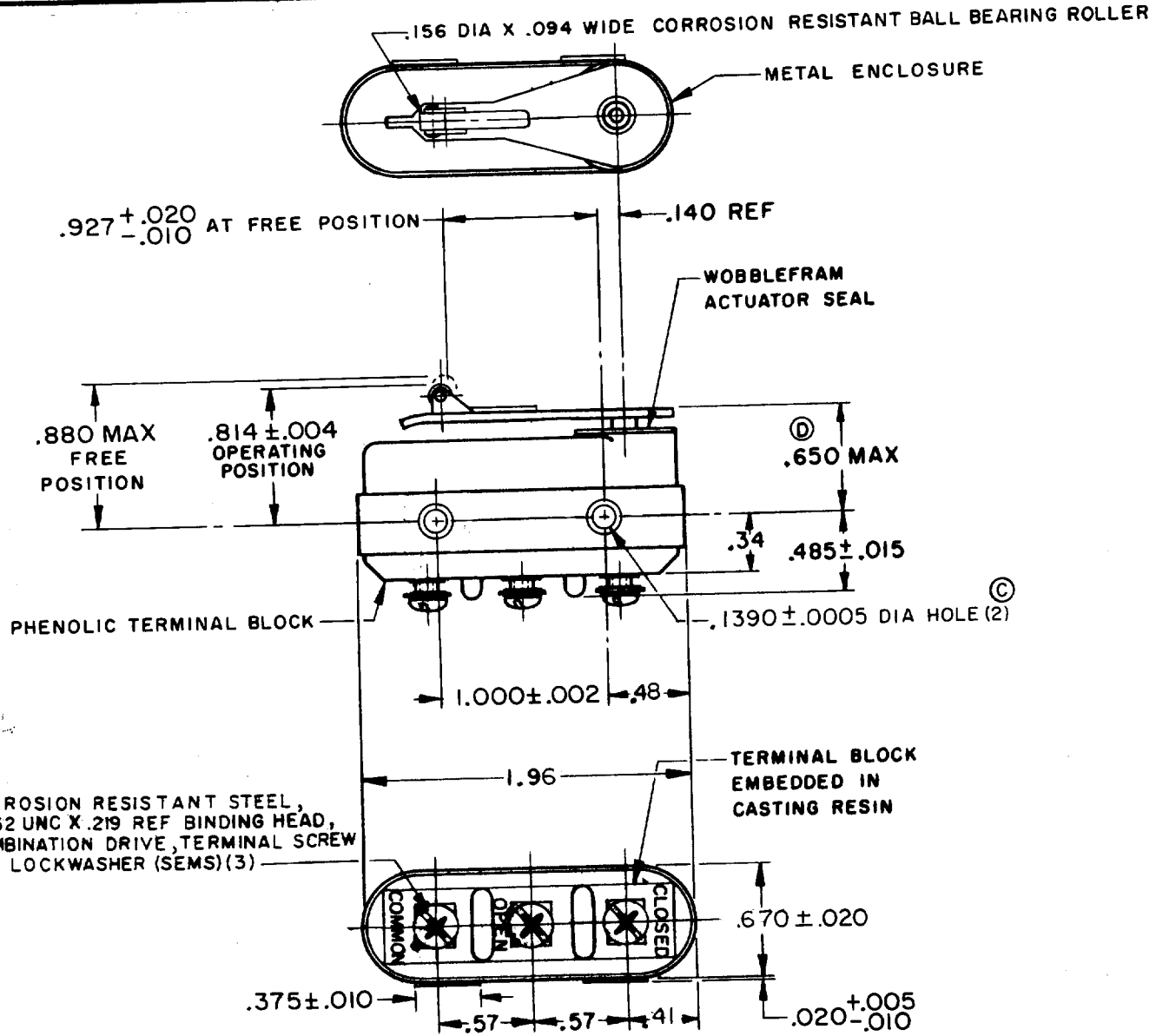
CHECK

CHECK

DRAWN

OMW

A	MADE MPS	20 NOV 61
B	SR 10464	23 AUG 62
C	CO 17322	24 OCT 62
D	CO 19072	13 MAY 64
E	CO 56087	9 NOV 84
F	CO 57626	20 JUN 85
G	CO 55162	17 DEC 85
H	CO 61043	16 SEP 88
J	CO 65768	12 JUN 89
K	CO 76375	31 AUG 93



- NOTE -
- 1 - THIS SWITCH FOR RIGHT HAND MOUNTING ONLY
 - 2 - THIS SWITCH IS RECOMMENDED FOR USE IN AMBIENT TEMPERATURES FROM MINUS 65° F TO PLUS 250° F
 - 3 - .006 MAX ROLLER SLANT ACROSS LENGTH OF ROLLER MEASURED FROM CENTER LINE OF MOUNTING HOLES
 - 4 - THE MASS OF THE MOVING CONTACT IS .22 GRAM

THIS DRAWING COVERS A PROPRIETARY ITEM AND IS THE PROPERTY OF MICRO SWITCH, A DIVISION OF MINNEAPOLIS-HONEYWELL REGULATOR CO. THIS DRAWING IS NOT TO BE COPIED OR USED WITHOUT THE APPROVAL OF MICRO SWITCH.

CHARACTERISTICS	ELECTRICAL DATA			SCALE FULL
OPERATING FORCE ----- 10-22 OZ	CONTACT ARRANGEMENT S P D T			DO NOT SCALE PRINT
RELEASE FORCE ----- 4 OZ MIN	LINE VOLTAGE	INDUCTIVE LOAD	RESISTIVE LOAD	UNLESS OTHERWISE SPECIFIED DIMENSIONS ARE IN INCHES TOLERANCES ARE: ONE PLACE (.0) \pm .030 TWO PLACE (.00) \pm .015 THREE PLACE (.000) \pm .008 ANGLES \pm
DIFFERENTIAL TRAVEL ----- .013 MAX	28 V.D.C.	5 AMP.	15 AMP.	
OVERTRAVEL ----- .035-.047				WEIGHT 1.9 OZ MAX