



**DUAL M.2 NVMe
SSD DOCKING STATION WITH
OFFLINE CLONE FUNCTION, USB-C™**



Quick Installation Guide

DA-71545 Rev. 1

Description

The Dual NVMe Docking Station from DIGITUS® can accommodate M.2 SSDs of up to 4 TB per box. Manage a total of 2 SSDs in various formats with a total storage of up to 8 TB. The integrated offline clone function even makes it possible to duplicate storage media by pressing a button without a connected end device. The copying progress is displayed by LED indicators on the device. Supports M-Key and B+M Key NVMe SSDs in the common formats 2242, 2260, 2280 & 22110. Easily extend the storage capacity of numerous USB-C™ devices such as PCs, notebooks, TVs, gaming consoles or routers.

Feature Benefits

- 2 x M.2 Boxes for NVMe SSDs, each up to 4 TB
- Offline clone function by pressing a button (possible without PC)
- High data transfer rate of up to 10 Gbps
- LED indicators show copying progress
- Can be used as a storage medium for up to 8 TB in total
- Supported formats: 2242, 2260, 2280 & 22110 / M-Key, B & M-Key SSDs (NVMe)
- USB-C™ connection: USB 3.2 Gen2
- Ideal storage extension for notebooks, PCs, gaming consoles, TVs, NAS or routers (USB-C™)
- Plug and Play, no driver installation required

Technical Features

Capacity	Max. 4 TB per Box
Supported formats	2242, 2260, 2280 & 22110 / M-Key, B & M-Key SSDs (NVMe)
USB-C™ connections	1 x Data USB-C™ 3.2 Gen2, 1 x Power supply USB-C™
Maximum transfer rate USB-C™	10 Gbps
Modes	Clone and dual mode
Applications	PC, notebook, TV, router or gaming console (with USB-C™ connection)
Storage formats	NTFS, FAT, FAT32
Input voltage USB-A power adapter	100 - 240 V AC / 50/60 Hz, 0.6 A - Euro plug: Type A (CEE 7/16)
Power supply via USB-A	5 V / 3 A
Systems	Windows 10/8/8.1/7/XP, macOS 10.0 or higher
Dimensions (W x D x H)	7.9 x 7.7 x 1.8 cm
Weight	152 g
Material	ABS
Color	Black
Specials	<ul style="list-style-type: none">• Supports Hot Swap (Plug in and eject during operation)• Offline clone function by pressing a button (possible without PC),• LED indicators for copying progress (25%, 50%, 75%, 100%)

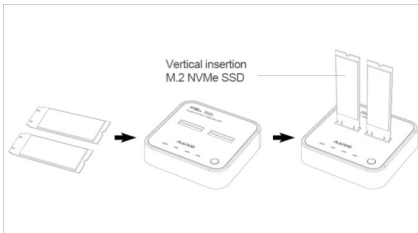
Product Details



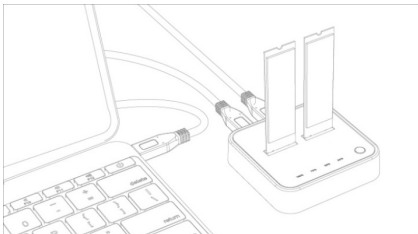
- | |
|--------------------------|
| 1) Clone button |
| 2) M.2 NVMe SSD2 |
| 3) ON/OFF button |
| 4) Power type C |
| 5) Data type C |
| 6) M.2 NVMe SSD1 |
| 7) Clone Indicator light |

Basic Functions

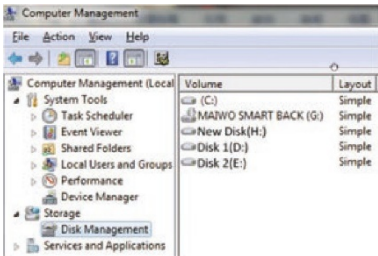
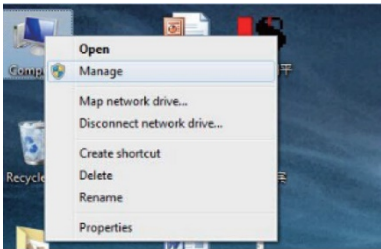
- Insert NVMe SSD with vertical direction, connect USB-C cable with data type C port and PC USB port



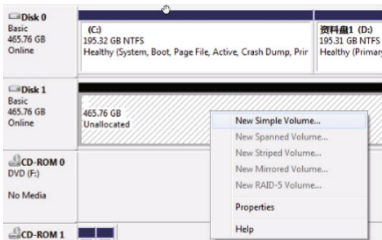
- Plug power adapter with power type C (workable with one SSD or two SSD)



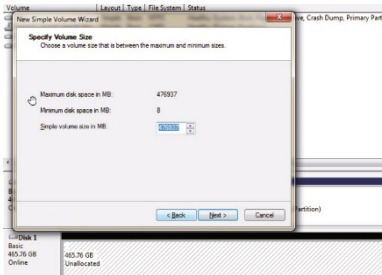
- View “Computer-Manage-Disk Management” to find the new disk



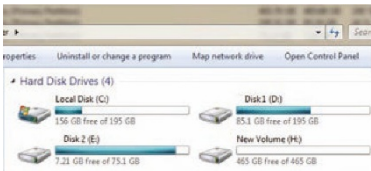
- Right click the “Disk 1”, then click “New Simple Volume”



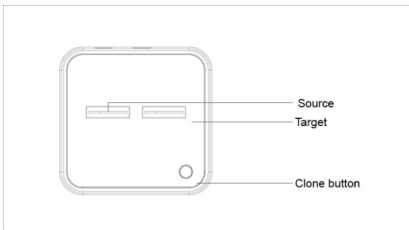
- According to the instruction, choose the size of partition, then click “Next” to finish



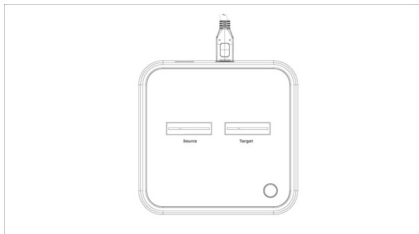
- Then you can find the new hard disk in the “Computer”, it is ready to use



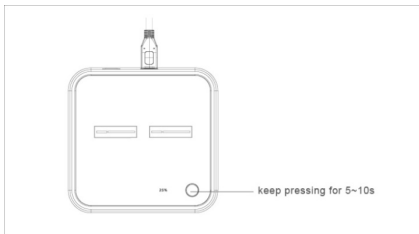
- Connect two NVMe SSD
(Source SSD capacity must be = < Target SSD)



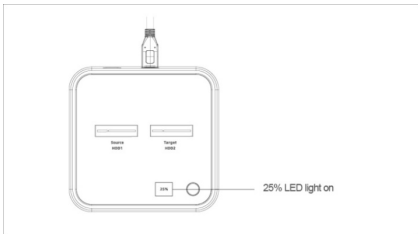
- Plug power adapter with power type C



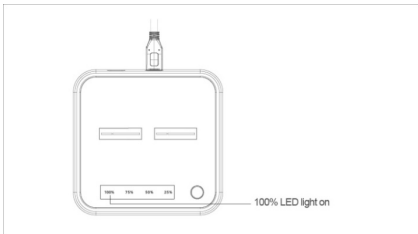
- Pressing clone button for several seconds, till clone LED light 25% flash



- Clone LED light flash from 25%, 50%, 75% and 100%



- It means that clone completed when 100% illuminate and all LEDs are off finally (Tip: when connect with PC again, make sure disconnect power type C first and follow operation as PC mode)



Disclaimer:

The product name and brand name may be registered trademark of related manufacturers. TM and ® may be omitted on the user manual. The pictures on the user manual are just for reference, and there may be some slight difference with the real products.

We reserve the rights to make changes without further notice to a product or system described herein to improve reliability, function or design.

Hereby Assmann Electronic GmbH, declares that the Declaration of Conformity is part of the shipping content. If the Declaration of Conformity is missing, you can request it by post under the below mentioned manufacturer address.

www.assmann.com
Assmann Electronic GmbH
Auf dem Schüffel 3
58513 Lüdenscheid
Germany

