

LogiLink®



Industrial Fast Ethernet PoE Switch, 8-Port

Art. No.: NS201P

Slim type 8-Port 10/100 Base-TX Ethernet PoE Switch, suitable for industrial application. Featuring eight 10/100 Mbps PoE auto-negotiation RJ45 ports, IP40-rated rugged aluminum case and a wide-ranging redundant power system (48–57 V DC). It is able to operate in any harsh environment with operating temperature ranging from -40 to 80°C.

Features:

- » Industrial switch, 8 10/100Base-TX PoE ports (30 W max. each port)
- » Unmanaged, easy installation, plug-and-play
- » Compact and rugged metal housing, IP40
- » Free fall, shock and vibration stability
- » Power input: 48 to 57 V DC redundant power
- » Extended operation temperature: -40–80°C
- » Suitable for DIN-rail mounting



Specification:

Protocols/Standards	IEEE 802.3, IEEE 802.3i, IEEE 802.3u, IEEE 802.3x, IEEE 802.3af, IEEE 802.3at
Interface	8 x 10/100 Mbps RJ45 ports
PoE Power Output (DC 48 V)	15,4 W max. (IEEE 802.3af), 30 W max. (IEEE 802.at)
Power Pin Assignment	1/2+; 3/6
Power Type	End-span
Bandwidth	1,6 Gbps
Packet Buffer Memory	1 Mbit
Packet Forwarding Rate	1,2 Mpps
MAC Address Table	2K
Maximum Frame Size	9K bytes packet size
Flow Control	Back pressure for half duplex, IEEE 802.3x pause frame for full duplex
LED Indicator	Power: Red; Ethernet: Yellow; PoE: Green
Network Cables	10Base-T: Cat.3/4/5 UTP (≤100 m); 100Base-TX: Cat.5 or later UTP (≤100 m)



NS201P



4 052792 067354

Made in China



*The specifications and pictures are subject to change without prior notice.
*All trade names referenced are the registered trademarks of their respective owners.

Best Connectivity

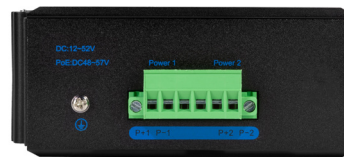
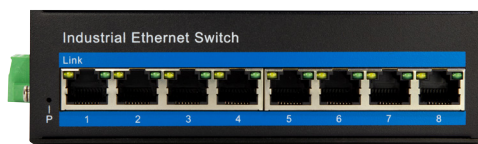
LogiLink®



Industrial Fast Ethernet PoE Switch, 8-Port

Art. No.: NS201P

Power Input	48–57 V DC redundant power
Surge Protection	±4 KV
Power Consumption	3 W
Installation	DIN rail
Enclosure	IP40 aluminum housing
MTBF	>300.000 hours
Operating Temperature	-40–80°C
Storage Temperature	-40–80°C
Storage Humidity	5–95% RH non-condensing
Dimension	14,4 x 10,3 x 4,8 cm
Weight	0,52 kg



Package Contents:

- » 1 x 8-Port Fast Ethernet PoE Switch
- » 1 x User Manual

Package Information:

- » Packing Dimension: 213 x 158 x 66 mm
- » Packing Weight: 0,36 kg
- » Carton Dimension: 445 x 350 x 343 mm
- » Carton Q'ty: 20 pcs
- » Carton Weight: 13,5 kg



NS201P



Made in China



*The specifications and pictures are subject to change without prior notice.
*All trade names referenced are the registered trademarks of their respective owners.

Best Connectivity