

LogiLink®



Industrial Gigabit Ethernet PoE Switch, 8-Port

Art. No.: NS203P

Slim type 8-Port 10/100/1000 Base-TX Ethernet PoE Switch, suitable for industrial application. Featuring eight 10/100/1000 Mbps PoE auto-negotiation RJ45 ports, IP40-rated rugged aluminum case and a wide-ranging redundant power system (48–57 V DC). It is able to operate in any harsh environment with operating temperature ranging from -40 to 80°C.

Features:

- » Industrial switch, 8 10/100/1000Base-TX PoE ports (30 W max. each port)
- » Unmanaged, easy installation, plug-and-play
- » Compact and rugged metal housing, IP40
- » Free fall, shock and vibration stability
- » Power input: 48 to 57 V DC redundant power
- » Extended operation temperature: -40–80°C
- » Suitable for DIN-rail mounting



Specification:

| | |
|----------------------------|---|
| Protocols/Standards | IEEE 802.3, IEEE 802.3i, IEEE 802.3u, IEEE 802.3x, IEEE 802.3af, IEEE 802.3at, IEEE 802.3ab, IEEE 802.3z |
| Interface | 8 x 10/100/1000 Mbps RJ45 ports |
| PoE Power Output (DC 48 V) | 15,4 W max. (IEEE 802.3af), 30 W max. (IEEE 802.at) |
| Power Pin Assignment | 1/2+; 3/6 |
| Power Type | End-span |
| Bandwidth | 20 Gbps |
| Packet Buffer Memory | 2 Mbit |
| Packet Forwarding Rate | 15 Mpps |
| MAC Address Table | 8K |
| Maximum Frame Size | 9K bytes packet size |
| Flow Control | Back pressure for half duplex, IEEE 802.3x pause frame for full duplex |
| LED Indicator | Power: Red; Ethernet: Yellow; PoE: Green |
| Network Cables | 10Base-T: Cat.3/4/5 UTP (≤100 m); 100Base-Tx: Cat.5 or later UTP (≤100 m) 1000BASE-TX: Cat.6 or later UTP (≤100 m) |

Best Connectivity



*The specifications and pictures are subject to change without prior notice.
*All trade names referenced are the registered trademarks of their respective owners.



NS203P



4 052792 067392

Made in China

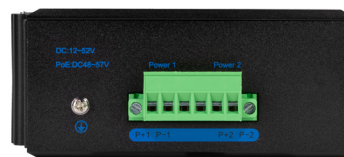
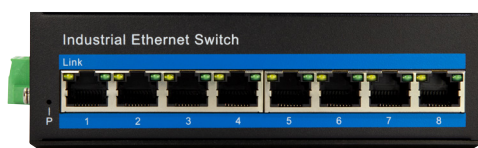
LogiLink®



Industrial Gigabit Ethernet PoE Switch, 8-Port

Art. No.: NS203P

| | |
|-----------------------|----------------------------|
| Power Input | 48–57 V DC redundant power |
| Surge Protection | ±4 KV |
| Power Consumption | 3 W |
| Installation | DIN rail |
| Enclosure | IP40 aluminum housing |
| MTBF | >300.000 hours |
| Operating Temperature | -40–80°C |
| Storage Temperature | -40–80°C |
| Storage Humidity | 5–95% RH non-condensing |
| Dimension | 14,4 x 10,3 x 4,8 cm |
| Weight | 0,52 kg |



Package Contents:

- » 1 x 8-Port Gigabit Ethernet PoE Switch
- » 1 x User Manual

Package Information:

- » Packing Dimension: 213 x 158 x 66 mm
- » Packing Weight: 0,36 kg
- » Carton Dimension: 445 x 350 x 343 mm
- » Carton Q'ty: 20 pcs
- » Carton Weight: 13,5 kg



NS203P



Made in China



*The specifications and pictures are subject to change without prior notice.
*All trade names referenced are the registered trademarks of their respective owners.

Best Connectivity