

# LogiLink®



## Industrial Fast Ethernet Switch, 8-Port

Art. No.: NS201

Slim type 8-Port 10/100 Base-TX Ethernet Switch, suitable for industrial application. Featuring 8 10/100 Mbps auto-negotiation RJ45 ports, IP40-rated rugged aluminum case and a wide-ranging redundant power system (12–52 V DC). It is able to operate in any harsh environment with operating temperature ranging from -40 to 80°C.

### Features:

- » Industrial switch, 8-port, 10/100Base-TX RJ45
- » Unmanaged, easy installation, plug-and-play
- » Compact and rugged metal housing, IP40
- » Free fall, shock and vibration stability
- » Power input: 12 to 52 V DC redundant power
- » Extended operation temperature: -40–80°C
- » Suitable for DIN-rail mounting



### Specification:

|                        |   |
|------------------------|---|
| Protocols/Standards    | IEEE 802.3, IEEE 802.3i, IEEE 802.3u, IEEE 802.3x                         |
| Interface              | 8 x 10/100 Mbps RJ45 ports  |
| Bandwidth              | 1,6 Gbps  |
| Packet Buffer Memory   | 1 Mbit  |
| Packet Forwarding Rate | 1,2 Mpps  |
| MAC Address Table      | 2K  |
| Maximum Frame Size     | 9K bytes packet size  |
| Flow Control           | Back pressure for half duplex, IEEE 802.3x pause frame for full duplex    |
| LED Indicator          | Power: Red; Ethernet: Yellow  |
| Network Cables         | 10Base-T: Cat.3/4/5 UTP (≤100 m); 100Base-TX: Cat.5 or later UTP (≤100 m) |
| Power Input            | 12–52 V DC redundant power  |
| Power Consumption      | Max. 3 W  |
| Surge Protection       | ±4 KV   |

Best Connectivity



\*The specifications and pictures are subject to change without prior notice.  
\*All trade names referenced are the registered trademarks of their respective owners.



NS201



Made in China

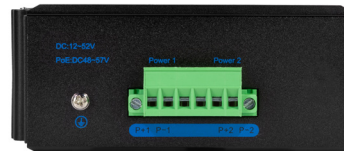
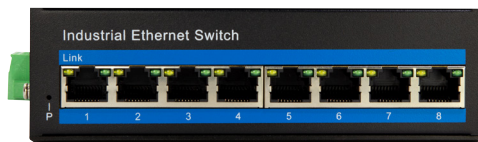
# LogiLink®



## Industrial Fast Ethernet Switch, 8-Port

Art. No.: NS201

|                       |                         |
|-----------------------|-------------------------|
| Installation          | DIN rail                |
| Enclosure             | IP40 aluminum housing   |
| MTBF                  | >300.000 hours          |
| Operating Temperature | -40–80°C                |
| Storage Temperature   | -40–80°C                |
| Storage Humidity      | 5–95% RH non-condensing |
| Dimension             | 14,4 x 10,3 x 4,8 cm    |
| Weight                | 0,52 kg                 |



### Package Contents:

- » 1 x 8-Port Fast Ethernet Switch
- » 1 x User Manual

### Package Information:

- » Packing Dimension: 213 x 158 x 66 mm
- » Packing Weight: 0,34 kg
- » Carton Dimension: 445 x 350 x 343 mm
- » Carton Q'ty: 20 pcs
- » Carton Weight: 13 kg



NS201



4 052792 067330

Made in China



\*The specifications and pictures are subject to change without prior notice.  
\*All trade names referenced are the registered trademarks of their respective owners.

Best Connectivity