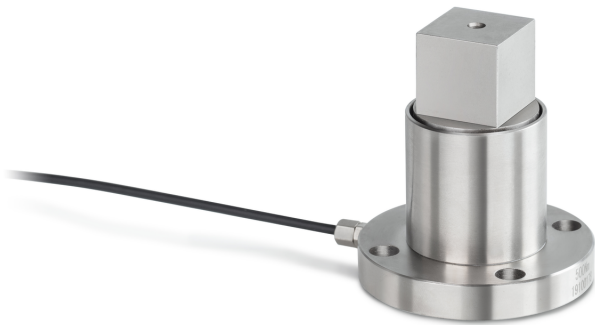


# KERN DC 100-Y1

Static torque sensor made from alloy steel

# KERN



Dimensions packaging (W×D×H)	120×90×85 mm
Net weight approx.	0,40 kg
Gross weight approx.	0,45 kg
Shipping weight	0,421 kg

## Piktogramme

### STANDARD



### OPTION



## Category

Brand	Sauter
Product category	Measuring cells
Product group	Torque sensors

## Measuring System

Measuring range torque [Max] (Nm)	100 Nm
Load cell connection	4-guide
Load cell - sensitivity - nominal	1 mV/V
Load cell - Combined error	0,5%
Load cell - Input resistance - nominal	380 Ω
Load cell - Output resistance - nominal	350 Ω
Load cell - Isolation resistance - [Min]	5000 MΩ
Load cell - Recommended excitation voltage [Min]	9 V
Load cell - Recommended excitation voltage [Max]	12 V
Load cell - Input resistance - variance	10 Ω
Load cell - Output resistance - variance	3 Ω

## Approval

CE mark	✓
---------	---

## Construction

Material	steel
Cable length	2 m

## Packing & Shipping

Readability force [d] (N)	1 d
Shipping method	Parcel service