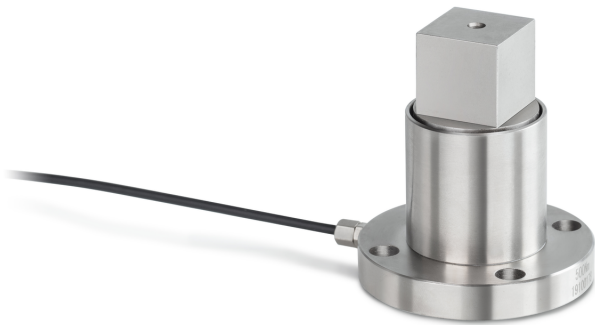


KERN DC 500-Y1

Static torque sensor made from alloy steel

KERN



Dimensions packaging (W×D×H)	120×90×85 mm
Net weight approx.	0,40 kg
Gross weight approx.	0,45 kg
Shipping weight	0,421 kg

Piktogramme

STANDARD



OPTION



Category

Brand	Sauter
Product category	Measuring cells
Product group	Torque sensors

Measuring System

Measuring range torque [Max] (Nm)	500 Nm
Load cell connection	4-guide
Load cell - sensitivity - nominal	1 mV/V
Load cell - Combined error	0,5%
Load cell - Input resistance - nominal	380 Ω
Load cell - Output resistance - nominal	350 Ω
Load cell - Isolation resistance - [Min]	5000 MΩ
Load cell - Recommended excitation voltage [Min]	9 V
Load cell - Recommended excitation voltage [Max]	12 V
Load cell - Input resistance - variance	10 Ω
Load cell - Output resistance - variance	3 Ω

Approval

CE mark	✓
---------	---

Construction

Material	steel
Cable length	2 m

Packing & Shipping

Readability force [d] (N)	1 d
Shipping method	Parcel service