

PLEASE CHECK WWW.MOLEX.COM FOR LATEST PART INFORMATION

Part Number: [0765001128](#)
Status: **Active**
Overview: [Impact Backplane Connector and Cable Assembly System](#)
Description: Impact 100 Ohm 4 Pair RAM Right-Angle Header, Unguided, Dual Endwall, 10 Columns, 120 Circuits, Pin Length 5.50mm, Plated Through Hole Dimension 0.39mm, Lead-Free

Documents:

3D Model	Application Specification AS-76060-994-001 (PDF)
Drawing (PDF)	Application Specification AS-76060-9999-001 (PDF)
3D Model (PDF)	Packaging Specification PK-70873-041-001 (PDF)
Product Specification PS-45499-002-001 (PDF)	Symbol Footprint Data SYM-76500-1128-001 (PDF)
Product Specification PS-76060-999-001 (PDF)	RoHS Certificate of Compliance (PDF)
Application Specification AS-76060-990-001 (PDF)	

Agency Certification

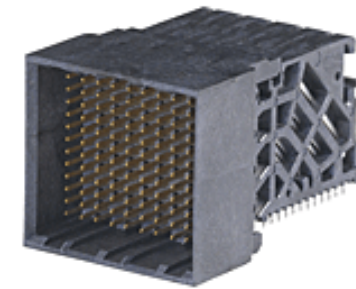
UL E29179

General

Product Family	Backplane Connectors
Series	76500
Application	Coplanar
Application Tooling Documents	TM-622018799-001
Component Type	PCB Header
Data Rate	25.0 Gbps
Electrical Model	Yes
Overview	Impact Backplane Connector and Cable Assembly System
Product Name	Impact
Taxonomy	Backplane Connectors
UPC	884982381278

Physical

Circuits (Loaded)	120
Circuits (maximum)	120
Color - Resin	Black
Durability (mating cycles max)	200
First Mate / Last Break	No
Flammability	94V-0
Guide to Mating Part	No
Keying to Mating Part	None
Material - Metal	High Performance Alloy (HPA)
Material - Plating Mating	Gold
Material - Plating Termination	Tin
Material - Resin	High Temperature Thermoplastic
Net Weight	12.420/g
Number of Columns	10
Number of Pairs	4
Number of Rows	12
Orientation	Right Angle
PC Tail Length	1.20mm
PCB Locator	No
PCB Retention	Yes
PCB Thickness - Recommended	1.00mm
Packaging Type	Tray
Pitch - Mating Interface	1.90mm
Pitch - Termination Interface	1.90mm



Series image - Reference only

EU ELV

Not Relevant

EU RoHS

Compliant

REACH SVHC

Not Contained Per -
D(2022)4187-DC (10
June 2022)

Halogen-Free

Status

Low-Halogen

For more information, please visit [Contact US](#)

China ROHS

ELV

RoHS Phthalates

China RoHS

Green Image

Not Relevant

Not Contained

Search Parts in this Series

[76500 Series](#)

Mates With

[76160 Impact 100 Ohm Daughtercard](#)

Plating min - Mating	0.762µm
Polarized to PCB	No
Stackable	No
Temperature Range - Operating	-55° to +85°C
Termination Interface: Style	Through Hole - Compliant Pin

Electrical

Current - Maximum per Contact	0.75A
Impedance	100Ω
Shield Type	N/A
Shielded	No
Voltage - Maximum	30V AC (RMS)/DC

Material Info**Reference - Drawing Numbers**

Application Specification	AS-76060-990-001, AS-76060-994-001, AS-76060-9999-001
Electrical Model Document	EE-76500-002-002
Packaging Specification	PK-70873-041-001
Product Specification	PS-45499-002-001, PS-76060-999-001
S-Parameter Model	SP-76500-002-002
Sales Drawing	SD-76500-001-001
Symbol/Footprint Data	SYM-76500-1128-001

This document was generated on 01/18/2023

PLEASE CHECK WWW.MOLEX.COM FOR LATEST PART INFORMATION