

CATania 3060 luminaire profile

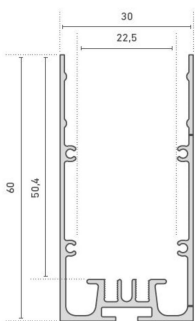
- high quality aluminium luminaire profile, anodised
- flexibly useable as surface-mounted or luminaire profile
- suitable for numerous applications with various combinable inserts
- integrateable power supply 66000315
- in combination with an opal white cover and compatible LEDlight flex, a homogenous light distribution can be achieved
- RAL powder coating on request



Please refer to the notes on expansion and assembly at the end of the data sheet!

ALUMINIUM PROFILE

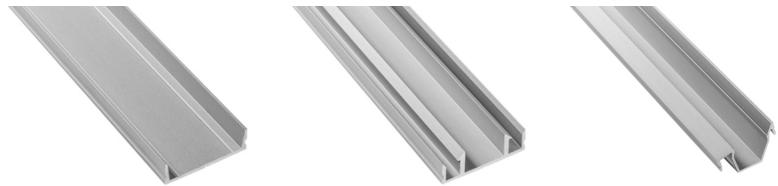
	62398811	62398812	62398813	62398815
Length	1000 mm	2010 mm	3020 mm	5030 mm
Width	30 mm			
Height	60 mm			
Material	Aluminium 6063			
Finish	anodised			
Weight	731 gr	1462 gr	2193 gr	3655 gr



INLAY

	62398821	62398831	62398841
Description	CATania 30 insert profile for mounting of LED PCBs with a maximum width of 23.5 mm	CATania 30 insert profile for mounting of LEDlight flex series, combinable with GARgano covers	CATania insert profile, asymmetrical, for mounting the LEDlight flex family, combinable with GARliano covers, light deflection 14°
Material	Aluminium EN AW 6060		
Finish	anodised		
Length	1000 mm		
Width	27,4 mm		
Height	7,9 mm	9,3 mm	17,91 mm

For other lengths please replace the last digit of the article number by: 2 = 2.01m / 3 = 3.02m / 5 = 5.03m



COVER

	62398851	62399821	62399841	62399851	62399861	62399871
Description	anodised aluminium cover	cover opal white, PMMA, for a homogenous and glare-free light distribution	high plastic cover, opal white, 180° for an all round homogenous light emission	cover nature, little light consumption and hiding technical view at the same time	cover clear, for the protection of the LED stripe	prisma cover to reduce the dazzling effect
Material	Aluminium	PMMA				
Transmission in %	0	77	84	91		
Length	1000 mm					
Width	27,4 mm	30 mm	27,4 mm			
Height	7,9 mm	27,8 mm	7,9 mm			

For other lengths please replace the last digit of the article number by: 2 = 2.01m / 3 = 3.02m / 5 = 5.03m



END CAPS

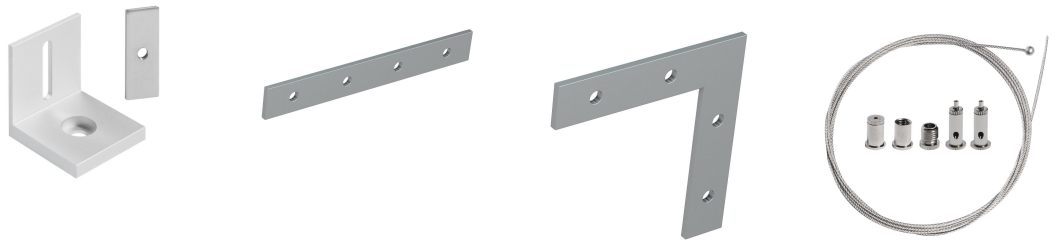
	62398817	62398818	62399846
Description	2 x alu end caps, incl. 8 screws	2 x alu end caps with screwless visible surface, incl. 4 grub screws	2 x end caps frosted for plastic cover high 180° item no. 6239984#
Material	Aluminium		Plastics
Length	2 mm		
Width	30 mm		
Height	60 mm		30 mm

Note: The screws for the end caps must be placed and screwed in at a right angle (90°) to the screw channel and may only be screwed in with a max. tightening torque of 0.35 Nm to prevent the screw head from unscrewing or the screw from overtightening (recommended bit PH1).



ACCESSORIES

	62398801	62398802	62398803	65400170
Description	2x angle brackets for a 90° wall installation, aluminium, anodised, incl. 1 rounded head screw for attaching the brackets to the profile	2x straight connectors, metal, incl. 8 grub screws	2x connectors, 90° angle, metal, incl. 8 grub screws	suspension for ceiling installation (2x 150 cm wire cable Ø 1 mm, 2x suspension brackets, 2x profile brackets)
Material		304 stainless steel		
Length	30 mm	80 mm	50,5 mm	
Width	34 mm	10,5 mm	50,5 mm	
Height	30 mm	1,7 mm		
Remarks				Workload: 8 kg/bracket (16 kg/set)



All aluminium profiles and covers are subject to certain length tolerances. This is +20/-0 mm irrespective of the length, i.e. a profile has at least the specified length, but can be up to 20 mm longer.

If you require an exact length, please specify this when ordering (article number 62397000).

Please note that the materials aluminum and PMMA can expand when the temperature changes vary greatly. With a temperature change of 20°C the expansion difference can be up to 1.2 mm per meter! This is no deficiency of the product but a normal physical process.

Installation note: If you directly install two aluminum profiles edge to edge (without end caps), please pay attention during installation, that you don't glue the LED strip directly over the joint, since the profiles at temperature fluctuations - especially at large lengths - will expand/contract (s. section 1) and then the LED tape may be damaged. At joints the LED strip has to be cut at the marked positions and reconnected with flexible solder bridges with corresponding expansion reserve (min. 5mm).

Installation situations



Intended Use

Profile:

- The LED profiles are a component for the reception of LED strips approved for this purpose. In combination with optional accessories such as covers, end caps, inserts, etc., LED luminaires can be produced which are used exclusively for general lighting or accent lighting and therefore do not serve emergency or safety lighting in particular.
- The assembly is carried out via appropriate holders or suspensions, which are offered as accessories. For brackets we recommend 3 brackets per running meter. The profiles are designed for mounting on a stable and straight surface. Depending on the substrate and local conditions, a higher number of brackets may be required and/or the installation material supplied (screws/plugs) must be replaced with suitable mounting material. The brackets must not be bent during assembly, as this has an influence on the holding force. It may not be possible to use the holders provided. Alternatively, the profile can be screwed directly to the substrate. In any case, the installer must ensure that the system is held securely.
- Make sure that the profile expands due to thermal influences. Sufficient space must be kept available for this purpose..
- The mounting instructions for the LED strips and power supplies must be viewed separately.
- The profile is to be used exclusively for the above shown installation situations.

Covers:

- All plastic covers made of PMMA have first-class photometric properties, but are very brittle due to the material, which means that the cover can splinter when subjected to mechanical influences (bending, sawing, other processing). There is a risk of injury, wear safety glasses and gloves! Plastic covers made of PC are not affected.
- PMMA or PC have a higher coefficient of thermal expansion than aluminium. This means that light slits may appear at the joints and terminations of the plastic covers, especially when the unit is not yet at operating temperature..
- To ensure that the cover is held securely, it must be clipped into the holding groove provided for this purpose along its entire length. In any case, the installer must ensure that the system is held securely.
- Alcoholic detergents remove plasticizers from the plastic profiles, which means that they lose their flexibility and can form cracks even when installed. We recommend cleaning only with a damp (clear water), soft cloth.

Accessories (end caps, holders, etc.):

- An LED profile and its accessories are not toys - these components may only be operated by persons who can assess the risks involved in handling them. There is a danger of swallowing small parts.

NOTE

Press marks or slight scratches on profiles are production-related and do not constitute a defect.

The guarantee period for the product is 5 years and begins on the day of shipment. Reference is the date of the delivery bill. The guarantee period may differ for accessories.