

The reproduction, transmission or use of this document or its contents is not permitted without express written authority. Offenders will be liable for damages. All rights, including rights created by patent grant or registration of a utility model or

La divulgación y reproducción de este documento así como el aprovechamiento de su contenido, no están autorizados, a no ser que se obtenga el consentimiento expreso para ello. Los infractores quedan obligados a la indemnización por daños y perjuicios. Se reservan todos los derechos, en particular para el caso de concesión de Patente o de Modelo de utilidad.

Weitergabe sowie Vervielfältigung dieser Unterlage, Verwertung und Mitteilung ihres Inhalts nicht gestattet, soweit nicht ausdrücklich zugestanden. Zuwiderhandlungen verpflichten zu Schadenersatz. Alle Rechte vorbehalten, insbesondere für den Fall der Patenterteilung oder GM-Eintragung.

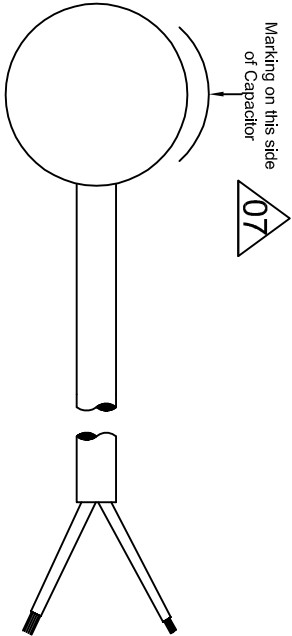
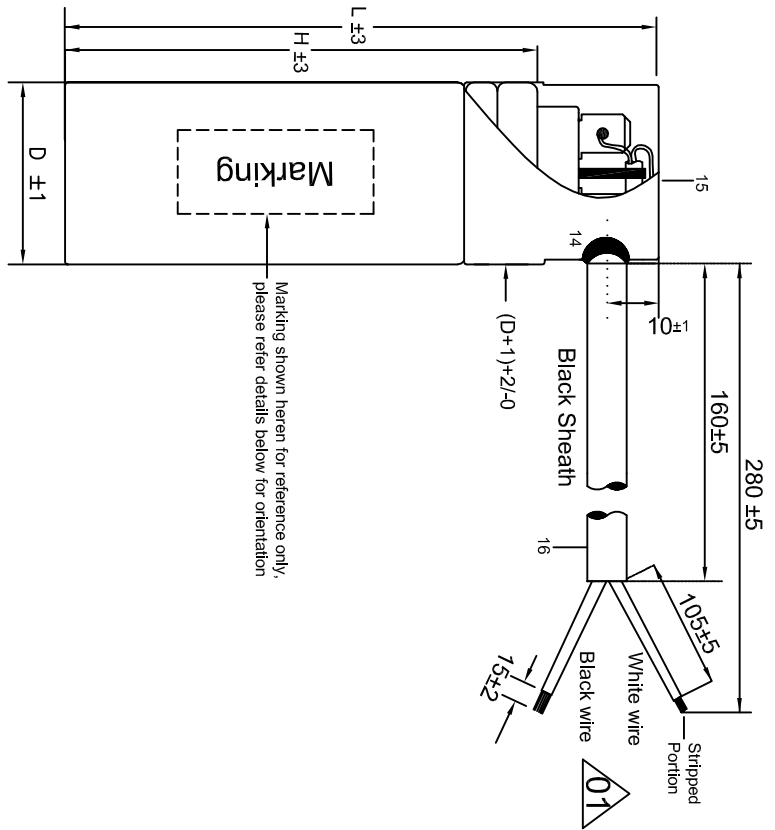
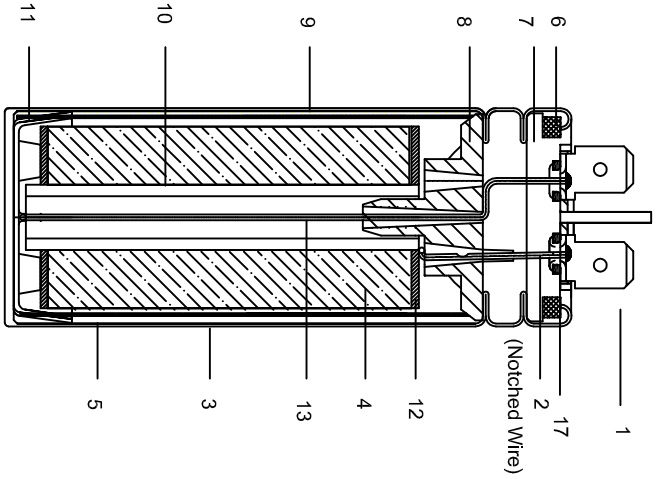


Table 2
List of components

Part Sr.No.	Part Description
1	Tin plated MS Double fast-on terminals 6.3x0.8 mm
2	Tin plated copper wire 18AWG
3	Aluminium Can
4	MPP Film Capacitor Element
5	Polyester Film for Insulation
6	Rubber Ring
7	Top Material UL 94 V0, IEC60335-1 compliance
8	Upper Insulation
9	Polyurethane Resin
10	Plastic Core
11	Bottom Insulation
12	Zinc Spray
13	Tin coated copper wire 19 SWG
14	Rubber Grommet
15	Aluminium Cap
16	Twin core cable 2/C 16 AWG (1.31MM ²) 90°C (UL) UL File No WATER RESISTANT SOOW
17	Rubber Ring For Lug

Grundfos Drawing Ref. ID 78 58

General tolerance		Surface quality	
06	Marking orientation updated	10.08.21	SPD
07	Cable pinning matter updated	26.09.20	SPD
06	Marking consolidated	10.01.18	SPD
06	K/COC removed from marking.		
05	P2 to S2 changed. O/E marking added	09.03.16	VGS
03	Tolerance changed from ±10 to ±5%	30.10.13	VGS
04	Marking orientation defined	11.09.12	VGS
02	Wire /cable specifications revised	27.08.12	VGS
01	Wire color and wire details changed	07.02.12	VGS
Riv.	Modification	Date	Name

ROHS
compatible



AL CAN CAPACITOR DFO WITH CAP. CABLE

Drawing no. GA1017-8 Page 1 of 2

The reproduction, transmission or use of this document or its contents is not permitted without express written authority. Offenders will be liable for damages. All right, including rights created by patent grant or registration of a utility model or


La divulgación y reproducción de este documento así como el aprovechamiento de su contenido, no están autorizados, a no ser que se obtenga el consentimiento expreso para ello. Los infractores quedan obligados a la indemnización por daños y perjuicios. Se reservan todos los derechos, en particular para el caso de concesión de Patente o de Modelo de utilidad.

Weitergabe sowie Vervielfältigung dieser Unterlage, Verwertung und Mitteilung ihres Inhalts nicht gestattet, soweit nicht ausdrücklich zugestanden. Zuwiderhandlungen verpflichten zu Schadenersatz. Alle Rechte vorbehalten. Insbesondere für den Fall der Patenterteilung oder GM-Eintragung.

Table 1
Ratings and dimensions



Rating 'C' in JF ± 5 % / Vrms	TDK Part No.	Diameter (ØD) in mm±1	Finished height (H) in mm ±3 mm	Total Height (L) in mm ±3 mm	Loss Factor limit (tanδ) at 1KHz	Grundfloss Part no.
50 / 450	B32333B6506J060	53	132	149	< 0.0070	-----

06 Marking on capacitor



CuF ± 5 % XXXX WW.YYN
 No PCBs 450VAC B PO. No.
 400VAC A 50/60Hz

E106388 B32333-XXX S2 PROTECTED
 10000AFC IEC 60252-1 MKP 5H
 25/085/21 MADE BY EPCOS

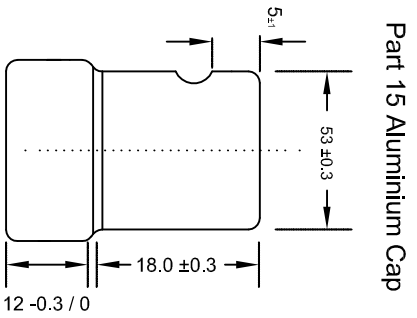
Nomenclatures in the above marking:

- Cx - Rated Capacitance
 - V_{RMS} - Rated Voltage
 - Tx - Tolerance on capacitance
 - SH - Self Healing type MPP Capacitor
 - 25/085/21 - Lower temperature limit is -25°C
 - Upper temperature limit is 85°C
 - Damp heat test - 21 days
 - ww.yyn - Batch number
 - XXXX - Grundfloss part number, blank if no part number is available
 - Part number - e.g: B32333-B...
- B32333 XXXX
 Last two digit of part number
 Revision status
 First Six digit of part number
- PO. No. - Production Order number



Table 3: Rating

Parameter	Specification
Rated Voltage	Refer 'table 1'
Rated Capacitance	Refer 'table 1'
Insulation Resistance	Between the terminals bound together and the casing > 1000 M Ohm
Withstand voltage	Between terminals 2.15 x rated VAC for 2 sec.
Dielectric Loss	Between terminals (2 x rated VAC)+(1000) VAC OR together and casing Min.2000 VAC for 2 sec.
Liquid tightness	Refer 'Table 1'
Maximum Working Temperature	8 Hrs' heating in an oven @ 95°C temperature. This should not result in leakage of the impregnant. At the portion of the capacitor casing surface where the highest temperature occurs: Not more than 85°C



Part 16 Two core cable 16 AWG

= Printing On Cable Sheath as per following Specification
 As this Cable is cut from continuous Cable so full printing will not come on every Cable, some Cable may have half printing.

Notes :- 1) Marking is with white ROHS compatible Ink
 2) Marking should Visible

Grundfos Drawing Ref. ID 78 58

General tolerance		Surface quality		Scale: NTS All dimensions are in mm	
				Material : Refer 'Table No.2	Customer:
06	Marking orientation updated	10.06.21	SND	Date	23.03.10
07	Cable printing number updated	26.09.20	SND		
06	Marking consolidated.	02.01.16	SND	Date	23.03.10
05	8 COC removed from marking.	08.03.16	VSS	Drawn	BSSR
04	p27 to S2 changed, CE marking added	30.10.13	VSS	Checked	RBE
03	Tolerance changed from ±10 to ±5%	30.10.13	VSS	Standard	EN 60252
02	Marking orientation defined	11.09.12	VSS		
01	Wire / cable specifications reviewed	27.06.12	VSS		
01	Wire color and wire dia's changed	07.02.12	VSS		
Riv.	Modification	Date	Name		

Material : Refer 'Table No.2

MPP CAPACITOR SAFE DEVICE

AL CAN CAPACITOR DFO WITH CAP , CABLE

Drawing no. GA1017-8 Page 2 of 2