


Instruction Manual

TECHNICAL SPECIFICATION

Model Number	MT76118	MT76119
Series Name	PANO+	
Color	White	
Wattage	18W/12W/9W	24W/17W/12W
Light source energy efficiency class <X>	D	E
System Lumen	1900lm	2500lm
Chip lumen	2500lm	3200lm
Candela	700cd	900cd
Beam Angle	110°	
Voltage	AC/DC 180-260V, 50/60Hz	
CCT (adjustable)	3.000°K/4.000°K/6.500°K	
CRI	Ra80	
Lifetime	30.000h	
Switching Cycles	40.000x	
Power Factor	> 0,9	
Cut Hole round (mm)	55 - 175	180 - 250
Cut Hole square (mm)	55 - 148	180 - 212
Dimensions ØxH (mm)	217 x 15	292 x 15
IP Rating	IP20	

Model Number	MT76002	MT76003	MT76010	MT76110
Series Name	PANO Magnetic Decoration Ring			
Color	Steel brushed		Matt black	
Dimensions Ø x H (mm)	219 x 15	294 x 15	219 x 15	294 x 15

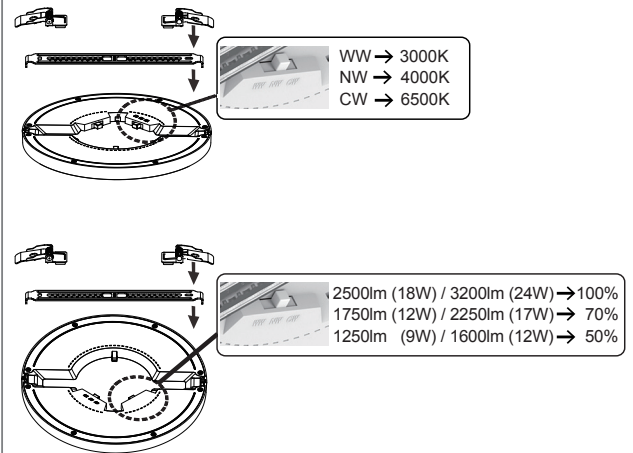
CAUTIONS:

- Read the entire manual carefully before installation and operation.
- Installation or replacement should be performed only by licensed and qualified electricians.
- Switch OFF the power source before installation, replacement and cleaning. ⚠
- Before replacement of the luminaire, turn it off and allow it to cool down.
- DO NOT disassemble the inner part of the luminaire. Doing so may result in luminaire damage or malfunction.
- DO NOT operate the luminaire if the external flexible cable or cord is damaged. The replacement of the luminaire should be handled by a licensed and qualified electrician for safety purpose.
- The minimum safety distance from the illuminated object is 0,1m. 
- The manufacturer accepts no liability for any damage resulting from the misuse of the luminaire or from when it is used with inappropriate equipment.
- The light source contained in this luminaire shall only be replaced by the manufacturer or his service agent or a similar qualified person. ⚠
- This product contains a light source of energy efficiency class <X>
- Consult your dealer if you have any enquiries.

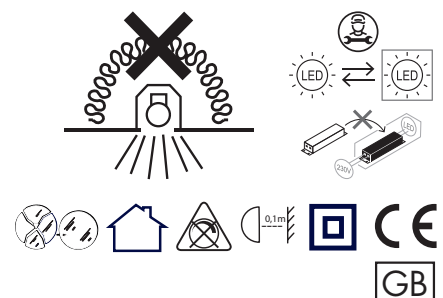
ATTENTION:

- Designed only for indoor applications.
- The operating temperature of the luminaire is -20° C to +40° C.

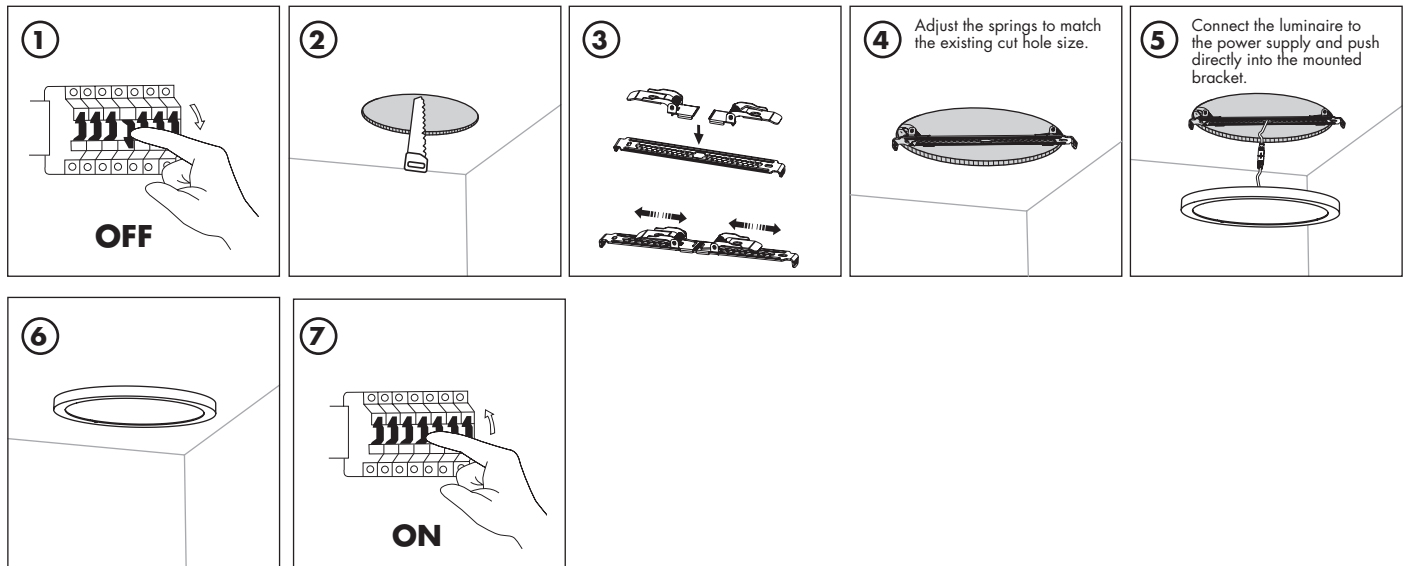
Color Temperature and Lumen Adjustment:



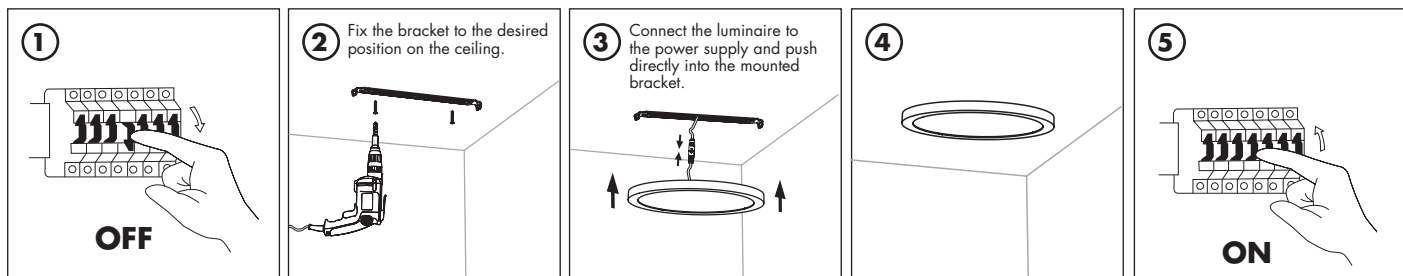
Slide the buttons on the back side of the luminaire before mounting, in order to set the desired color temperature and lumen level.



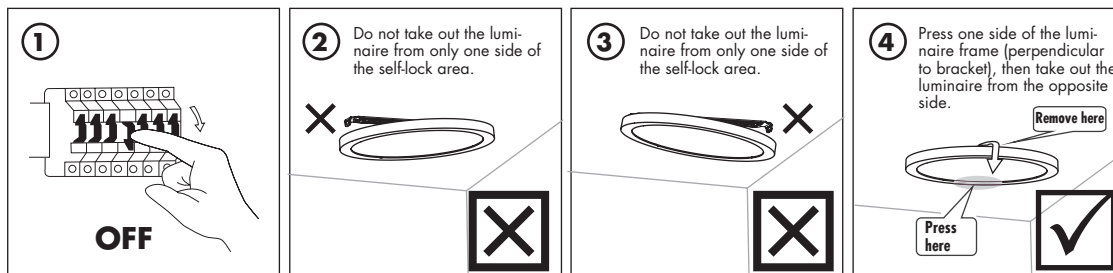
RECESSED INSTALLATION (existing cut hole):



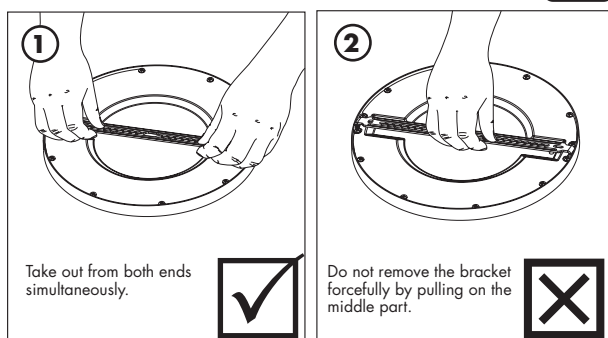
SURFACE MOUNT INSTALLATION (without cut hole):



HOW TO UNINSTALL?



Detach Bracket



Correct disposal of this product

This marking indicates that this product should not be disposed with other household wastes throughout the EU. To prevent possible harm to the environment or human health from uncontrolled waste disposal, recycle it responsibly to promote the sustainable reuse of material resources. To return your used device, please use the return and collection systems or contact the retailer where the product was purchased. They can take this product for environmental safe recycling.