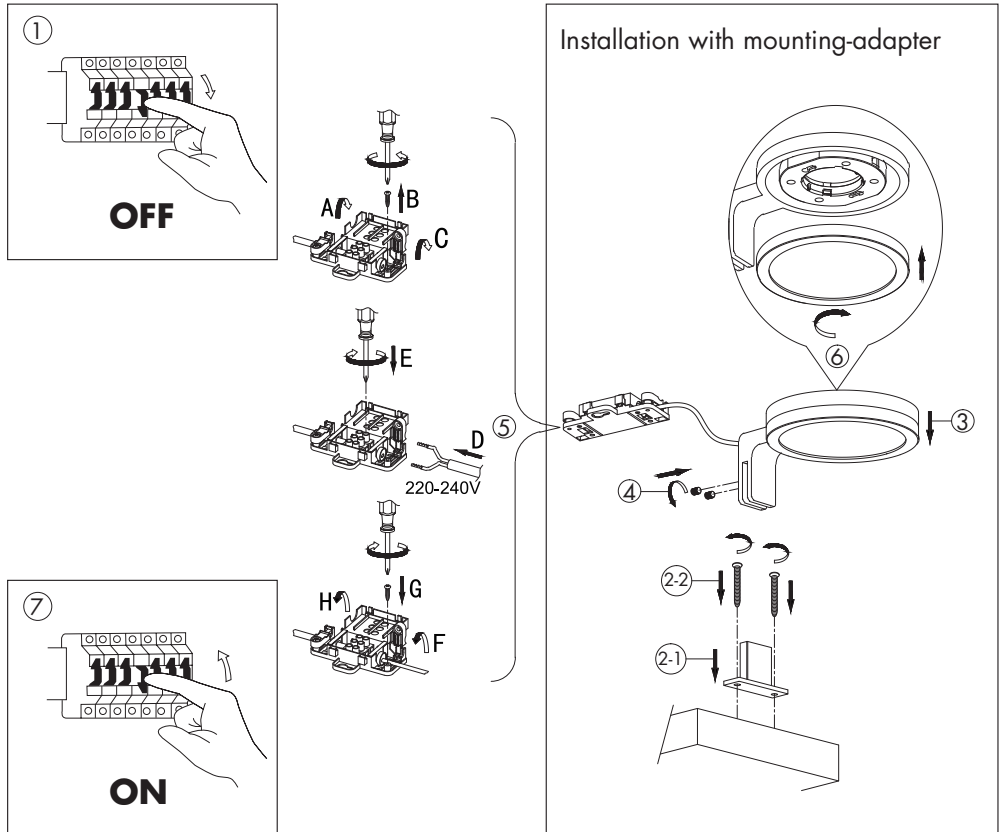


INSTALLATION



1. Turn OFF the power.
2. Fix the mounting adapter on the surface at the desired location with appropriate screws.
3. Insert the luminaire holder into the mounting adapter.
4. Use the 2 plastic fastening screws in order to affix & secure the luminaire position.
5. Connect the cable to the terminal block.
6. Insert the lamp into the lamp holder.
7. Turn ON the power.