

# MULTIFUNCTIONAL HEAD LAMP

## INSTRUCTIONS

Item no: 2813549



## INSTRUCTIONS

1. The product is designed with built-in lithium rechargeable battery, which is safe and fast;
2. Lithium battery characteristics: The charging mode of lithium battery is completely different from that of mobile phone battery; Lithium battery has no memory and can be charged at any time;
3. When not in use, the lithium battery will release about 1% of the power or less every day; it is recommended not to use the battery for a long time. The battery should be fully charged and stored,
4. Pay attention to the splashproof, moisture-proof and fall proof of the battery;
5. The headlamp shall be ventilated after water inlet is stopped;

## PARAMETERS

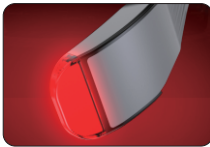
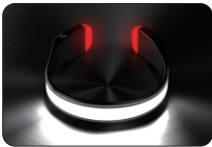
**Mode:** Multi-function Head Lamp/neck Reading Light  
**Led Wick:** 50 \* Cob Light Strip, 10 \* 2835 Patch Red Light  
**Size:** 165 \* 41 \* 195 (mm)  
**Weight:** About 92.4g (without Package)  
**Brightness:** About 450 Lumens  
**Material:** Abs, Ps  
**Battery:** Built-in 1200mah Lithium Battery  
**Accessories:** Head Lamp, Type-c Charging Cable.  
**Function:** Red Light Warning, Charging Breathing Light  
**Scene:** Maintenance, Fishing, Hiking, Exploration, Camping, Etc

## GEAR POSITION AND CHARGING

### 1. Switch and gear shift

- ◆ The product switch is a push dimming design, which can be adjusted freely according to the scene illumination brightness;

**MODE:** The main light (strong light weak light burst)  
The auxiliary lamp is synchronized with the main lamp



### 2. Product charging

- ◆ This product supports Type-C direct charging. Please use the matching charging cable for charging. You can use various standard Type-C interfaces such as mobile phone charging head. After charging, please install rubber plugs to prevent water from entering.



## WARNING

- Built in high capacity polymer lithium battery, and it's necessary to charge the batteries before it exhausted at least once a month to protect its lifespan .
- Non-Waterproof , do not submerge it into water directly .
- Do not disassemble the sealed head ,as this will damage the headlamp.
- When the headlamp is on , do not point it at the eyes directly to avoid damage.