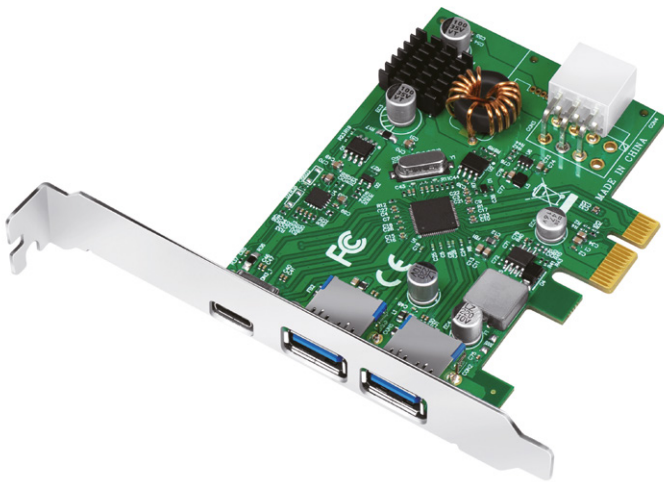


LogiLink®

USB 3.2 Gen 1 PCIe Card 2 x USB-A + 1 x USB-C™ PD Ports

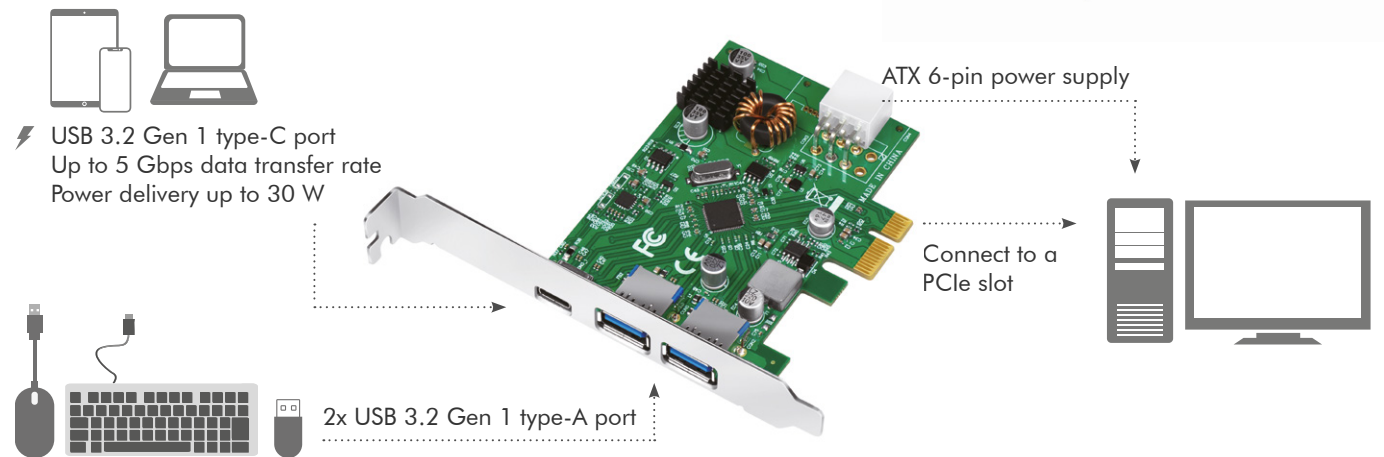
Art. No.: PC0090



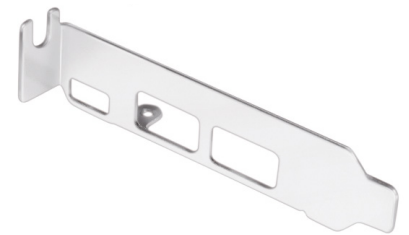
This USB 3.2 Gen 1 PCI Express Card with 5 Gbps data transfer speed, upgrades your current system by an additional USB-C PD 3.0 port and two USB 3.2 Gen 1 ports. Supports 30 W power delivery for fast charging USB-C device.

Features:

- » Compliant with PCI-Express 2.0 specification
- » Data transfer rate up to 5 Gbps
- » Supports USB-C PD 3.0 with max. 30 W power output
- » 2x USB 3.2 Gen 1 Type-A and 1x USB 3.2 Gen 1 Type-C ports
- » Supports Windows and Linux



Download the driver online if required: <http://downloads.2direct.de/treiber/PC0090.zip>



Low Profile Bracket included



*The specifications and pictures are subject to change without prior notice.
*All trade names referenced are the registered trademarks of their respective owners.

Specifications:

Chipset	VL805
Interface	PCI-E 2.0 x1
Expansions	2x USB-A Female + 1x USB-C Female
USB Standard	USB 3.2 Gen 1
Transfer Rate	Up to 5 Gbps
USB-A Power Output	Max. 5 V/0.9 A (4.5 W)
USB-C Power Delivery	5 V/3 A (15 W), 9 V/3 A (27 W), 12 V/2.5 A (30 W), 15 V/2 A (30 W), 20 V/1.5 A (30 W) *Total output 30 W max.
Power By	PCI Express bus power & ATX 6-pin
Protection	Over-voltage, over-current and over-temperature
Hot Plug and Plug & Play	Yes
Compatibility	Windows 7, 8.x, 10, 11, Windows Server 2008 R2 32/64 bit, 2012 R2, 2016, 2019, 2022 and Linux Kernel 2.6 or later
Operating Temperature	0–85°C
Operating Humidity	0–95% RH (no condensation)
Dimensions	12 x 10.3 x 2.15 cm
Weight	60 g

Package Contents:

- » 1 x USB 3.2 Gen 1 PCI Express Card
- » 1 x Low Profile Bracket
- » 1 x User Manual

Package Information:

- » Packing Dimension: 150 x 135 x 30 mm
- » Packing Weight: kg
- » Carton Dimension: 310 x 280 x 310 mm
- » Carton Q'ty: 40 pcs
- » Carton Weight: kg



*The specifications and pictures are subject to change without prior notice.
*All trade names referenced are the registered trademarks of their respective owners.

