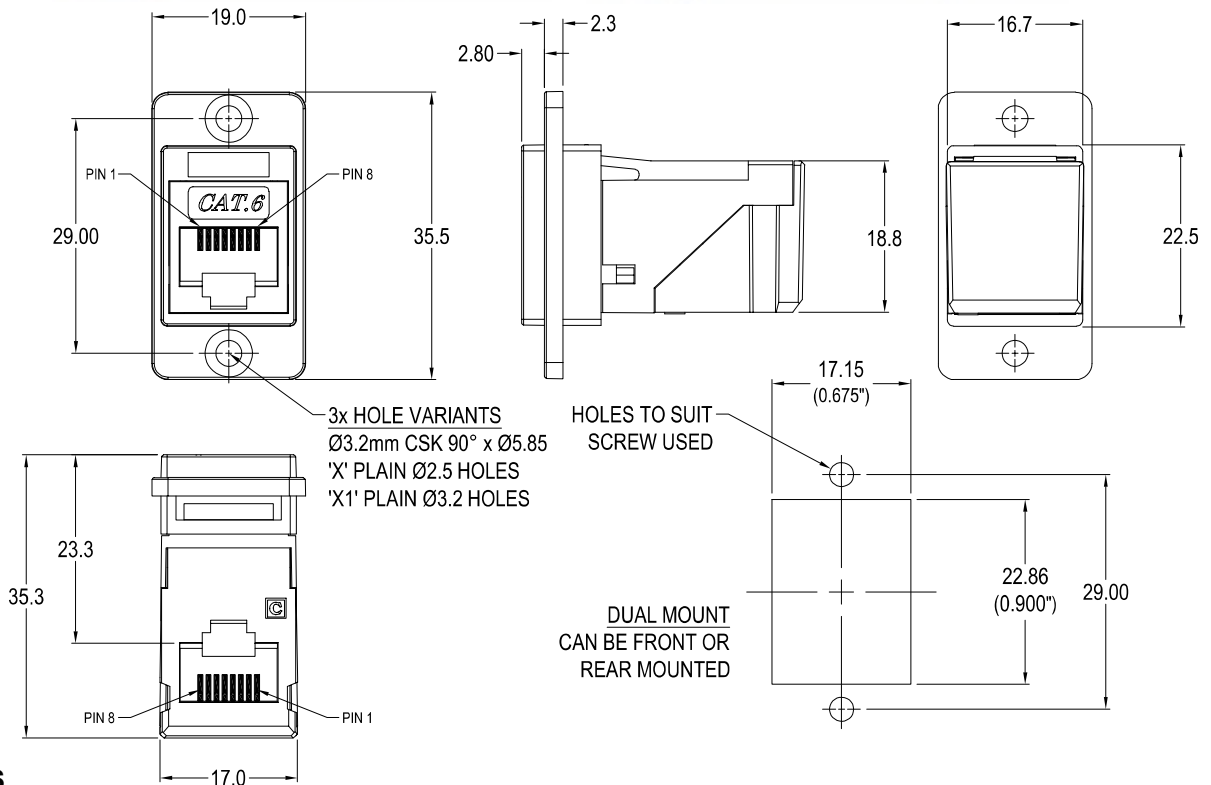
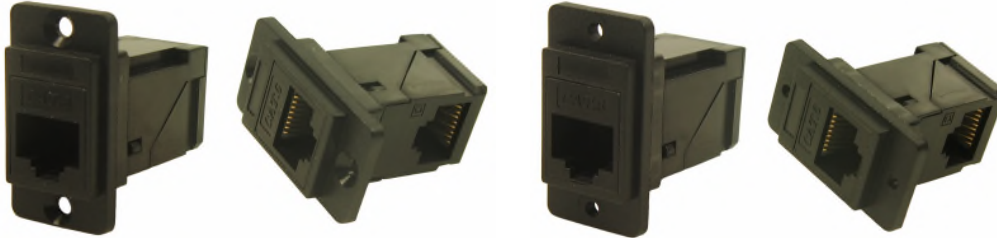


# CLIFF

## DUALSLIM CAT.6 RJ45 RIGHT ANGLE FEEDTHROUGH CONNECTOR

Can be front or rear mounted in the panel



### VARIANTS

Part No.

**CP30752**

RAFT DUALSLIM Cat.6 RJ45 Black plastic frame, CSK holes

**CP30752X**

RAFT DUALSLIM Cat.6 RJ45 Black plastic frame, Ø2.5 PLAIN holes

**CP30752X1**

RAFT DUALSLIM Cat.6 RJ45 Black plastic frame, Ø3.2 PLAIN holes

### Feedthrough Features

- Fits standard rectangular cutout.
- Front or rear mounting through the panel.
- Various hole mounting options.
- No soldering or punch termination. Use standard cable for each connector style.
- Low rear profile.
- 90° or right angle rear cable entry.

### General:

Please note: Functionality is affected by cable quality, length and cable wiring configuration.

### Material:

1. RJ45 In-Line Coupler: ABS UL94-V2
2. RJ45 In-Line Coupler Contact: Phosphor Bronze, gold plating.

3. PCB: FR4

4. Frame: Polyamide UL94-V2

### Performance:

1. T568A & T568B wiring.
2. Meet ISO/IEC 11801 and EN50173
3. Meet ANSI/TIA/EIA 568B.2
4. Rating: 125VAC RMS 1.5A
5. Operating Temperatures: Min -10°C Max +60°C