

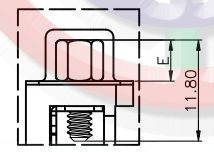
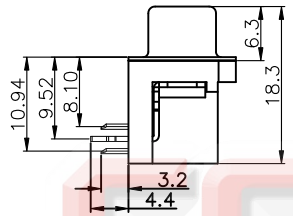
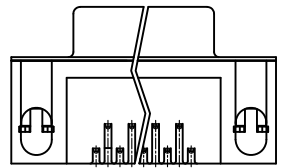
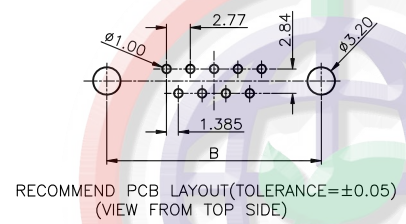
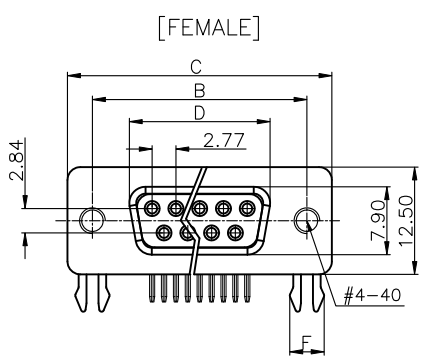
REV.	DESCRIPTION	DRAWN	CHECKED	APPROVED
A	NEW RELEASE	LJH 05/13/06'		LJC 05/13/06'
E	ADD SCREW TYPE	YCH 05/28/09'		LJC 05/28/09'
H	DRAWING UPDATE	JLZ 08/08/17'		

NOTES:

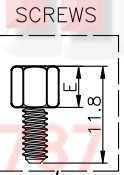
- SPECIFICATIONS:
 - VOLTAGE RATING: 250V AC.
 - CONTACT CURRENT RATING: 1.5A MAX. PER PIN.
 - CONTACT RESISTANCE: 20mΩ MAX.
 - DIELECTRIC WITHSTANDING VOLTAGE: 500V AC(rms) FOR 1 MINUTE.
 - INSULATION RESISTANCE: 1000MΩ MINI.
 - TEMPERATURE RANGE: -40°C~+105°C.
- PRODUCT NUMBER CODE:

DS1037-XXXXXXXX-XXX

- SCREW MATERIALS (F)
 - F: STEEL C: COPPER ALLOY
- BOARD LOCK MATERIALS (F)
 - F: STEEL C: COPPER ALLOY
- INSULATOR MATERIALS (F)
 - 0: PBT UL94 V-0 2: PBT UL94 HB
- SCREW DIM. E
 - 4: 4.80mm 5: 5.80mm
 - 6: 4.80mm(Inside thread M2.6*0.45p, outside thread unc#4-40)
 - M3: 4.80mm(Inside thread M3.0, outside thread unc#4-40)
- BOARD LOCK DIM. F
 - 7: 3.70mm
- CONTACT PLATING
 - T: SELECTIVE GOLD FLASH
 - Si: FULL GOLD FLASH
 - 6: FULL TIN 1: SELECTIVE 10u" GOLD
- COLOR OF HOUSING
 - K: BLACK B: BLUE C: BLUE(PC99)
- SCREW TYPE
 - A: WITH SCREW TYPE B: WITH RIVET TYPE
 - C: WITH SCREW AND RIVET TYPE
 - D: RIVET TYPE WITH SCREWS IN BULK PACKAGE
 - E: WITH RIVET TYPE(N/A THREAD)
- SHELL PLATING
 - N: Nickel T: Tin
- CONNECTOR TYPE
 - M: MALE F: FEMALE
- No. OF CONTACT
 - 09,15,25,37



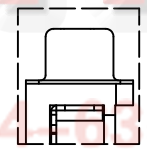
WITH SCREW TYPE



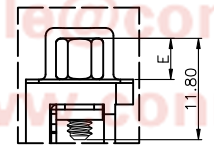
Inside screw thread

Outside screw thread

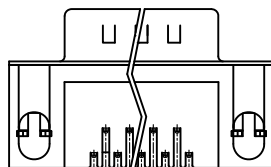
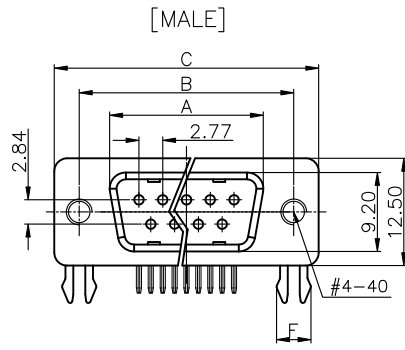
Screw figure



WITH RIVET TYPE



WITH SCREW AND RIVET TYPE



Dimensions:

Positions	A±0.2	B±0.2	C±0.2	D
9	17.90	24.99	30.80	16.33
15	26.50	33.32	39.14	24.66
25	40.00	47.04	53.04	38.38
37	56.50	63.50	69.32	54.84

GENERAL TOLERANCE		ANGLE TOLERANCE	
X.	±0.60	X.	±5°
.X	±0.38	.X	±3°
.XX	±0.25	.XX	±2°

DRAWING TYPE	CUSTOMER		
SCALE	1:1	SHEET	1 OF 1
DRAWING NO.	C-DS1037-XXXXXXXX-XXX-H		

PROJECTION		TITLE	D-SUB STANDARD	
UNITS	mm		RIGHT ANGLE(7.2mm) TYPE	
SHEET SIZE	A4	SERIES	DS1037 SERIES	

晨翔电子有限公司
CONNFly® CONNFly ELECTRONIC CO., LTD