



Neutral conductor/PE terminal, continuous, for floor mounting, Up to 32 A, accessory for main and emergency switching-off switch 3LD2

Model	
product brand name	SETRON
product designation	Neutral conductor/PE terminal
design of the product	accessories for 3LD2 main and EMERGENCY-STOP switches
AWG number as coded connectable conductor cross section	
• minimum	14
• maximum	8
type of connectable conductor cross-sections for main contacts	
• finely stranded with core end processing	1x (1.5 ... 16 mm ²)
• solid or stranded	1x (1.5...10 mm ²)
General Product Approval	Test Certificates other



[Confirmation](#)



[Special Test Certificate](#)

[Miscellaneous](#)

other	Environment
-------	-------------

[Confirmation](#)

[Environmental Confirmations](#)

Further information

Siemens has decided to exit the Russian market (see here).

<https://press.siemens.com/global/en/pressrelease/siemens-wind-down-russian-business>

Siemens is working on the renewal of the current EAC certificates.

Please contact your local Siemens office on the status of validity of the EAC certification if you intend to import or offer to supply these products to an EAC relevant market (other than the sanctioned EAEU member states Russia or Belarus).

Information on the packaging

<https://support.industry.siemens.com/cs/ww/en/view/109813875>

Information- and Downloadcenter (Catalogs, Brochures,...)

<http://www.siemens.com/lowvoltage/catalogs>

Industry Mall (Online ordering system)

<https://mall.industry.siemens.com/mall/en/en/Catalog/product?mlfb=3LD9220-2C>

Service&Support (Manuals, Certificates, Characteristics, FAQs,...)

<https://support.industry.siemens.com/cs/ww/en/ps/3LD9220-2C>

Image database (product images, 2D dimension drawings, 3D models, device circuit diagrams, ...)

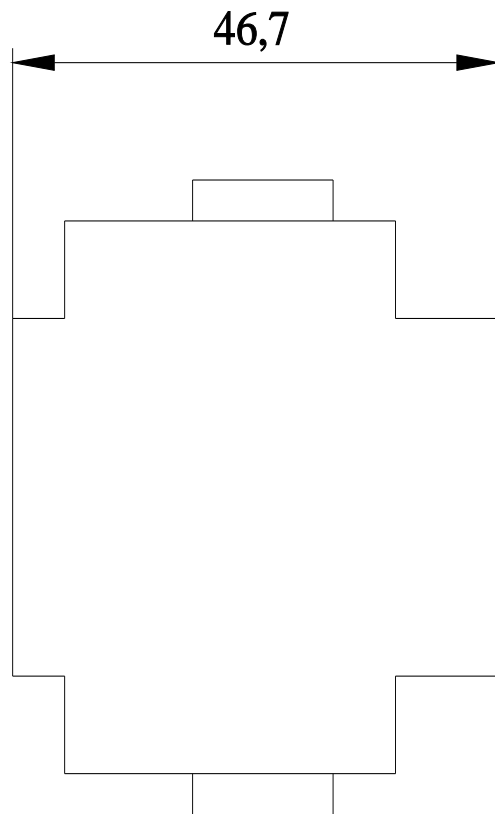
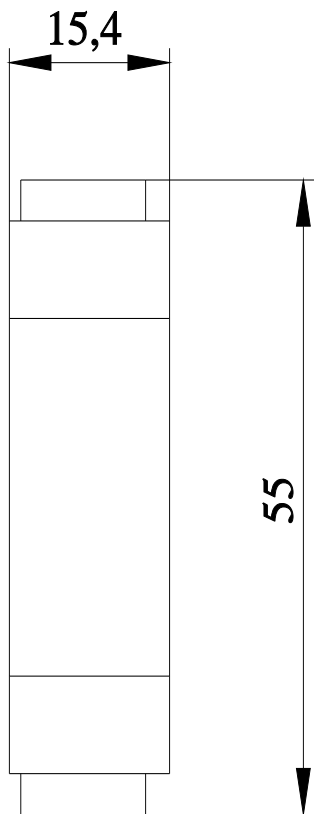
http://www.automation.siemens.com/bilddb/cax_en.aspx?mlfb=3LD9220-2C

CAX-Online-Generator

<http://www.siemens.com/cax>

Tender specifications

<http://www.siemens.com/specifications>



last modified:

7/30/2022 

