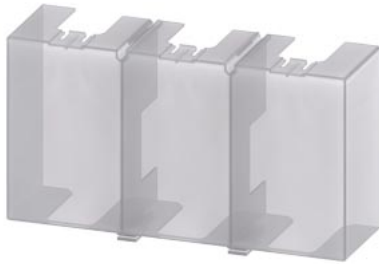


Terminal cover for 3RW55/52 Size 2 and 3



product brand name	SIRIUS
product category	Terminal covers
product designation	Terminal cover
manufacturer's article number	
• of soft starter	3RW522 (2x), 3RW523 (2x)
• of soft starter	3RW552 (2x), 3RW553 (2x)
Substance Prohibittance (Date)	02/15/2018

<b>Ambient conditions</b>	
ambient temperature during storage and transport	-40 ... +80 °C

<b>Safety related data</b>	
protection class IP on the front according to IEC 60529	IP20
touch protection on the front according to IEC 60529	finger-safe, for vertical contact from the front

**Certificates/ approvals**

General Product Approval	For use in hazardous locations	Declaration of Conformity	Test Certificates
<a href="#">Confirmation</a> 	<a href="#">Explosion Protection Certificate</a> 	 EG-Konf.	<a href="#">Type Test Certificates/Test Report</a>

**Marine / Shipping** other

 ABS	 BUREAU VERITAS	 LRS	 PRS	 DNV-GL	<a href="#">Confirmation</a>
--	---	--	--	---	------------------------------

**Further information**

Siemens has decided to exit the Russian market (see here).  
<https://press.siemens.com/global/en/pressrelease/siemens-wind-down-russian-business>

Siemens is working on the renewal of the current EAC certificates.  
 Please contact your local Siemens office on the status of validity of the EAC certification if you intend to import or offer to supply these products to an EAC relevant market (other than the sanctioned EAEU member states Russia or Belarus).

Information on the packaging  
<https://support.industry.siemens.com/cs/ww/en/view/109813875>

Information- and Downloadcenter (Catalogs, Brochures,...)  
<https://www.siemens.com/ic10>

Industry Mall (Online ordering system)  
<https://mall.industry.siemens.com/mall/en/en/Catalog/product?mifb=3RW5983-0TC20>

Cax online generator  
<http://support.automation.siemens.com/WW/CAXorder/default.aspx?lang=en&mifb=3RW5983-0TC20>

Service&Support (Manuals, Certificates, Characteristics, FAQs,...)  
<https://support.industry.siemens.com/cs/ww/en/ps/3RW5983-0TC20>

Image database (product images, 2D dimension drawings, 3D models, device circuit diagrams, EPLAN macros, ...)

[http://www.automation.siemens.com/bilddb/cax\\_de.aspx?mlfb=3RW5983-0TC20&lang=en](http://www.automation.siemens.com/bilddb/cax_de.aspx?mlfb=3RW5983-0TC20&lang=en)

Characteristic: Tripping characteristics, I<sup>2</sup>t, Let-through current

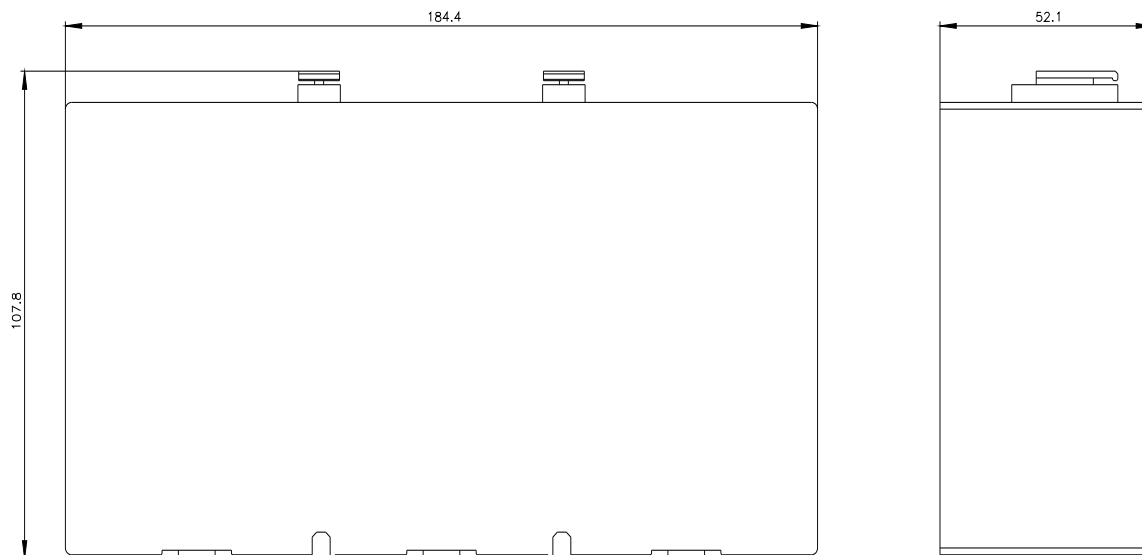
<https://support.industry.siemens.com/cs/ww/en/ps/3RW5983-0TC20/char>

Characteristic: Installation altitude

<http://www.automation.siemens.com/bilddb/index.aspx?view=Search&mlfb=3RW5983-0TC20&objecttype=14&gridview=view1>

Simulation Tool for Soft Starters (STS)

<https://support.industry.siemens.com/cs/ww/en/view/101494917>



---

last modified:

12/15/2020 

