









power contactor AC-1 1700 A / 690 V / 40 °C 3-pole, U_c: 220-240 V AC(50-60 Hz) / DC drive: conventional auxiliary contacts 2 NO + 2 NC main circuit: busbar control and auxiliary circuit: screw terminal

product brand name	SIRIUS
product designation	Contacteur
product type designation	3RT14
General technical data	
product extension	
• function module for communication	No
• auxiliary switch	Yes
power loss [W] for rated value of the current	
• at AC in hot operating state	660 W
• at AC in hot operating state per pole	220 W
• without load current share typical	11 W
insulation voltage	
• of main circuit with degree of pollution 3 rated value	1 000 V
• of auxiliary circuit with degree of pollution 3 rated value	600 V
surge voltage resistance	
• of main circuit rated value	8 kV
• of auxiliary circuit rated value	6 kV
shock resistance with sine pulse	
• at AC	8g / 11 ms
• at DC	8g / 11 ms
mechanical service life (operating cycles)	
• of contactor typical	500 000
Substance Prohibition (Date)	03/27/2020
Ambient conditions	
installation altitude at height above sea level maximum	2 000 m
ambient temperature	
• during operation	-25 ... +55 °C
• during storage	-40 ... +80 °C
relative humidity minimum	10 %
relative humidity at 55 °C according to IEC 60068-2-30 maximum	95 %
Main circuit	
number of poles for main current circuit	3
number of NO contacts for main contacts	3
number of NC contacts for main contacts	0
type of voltage for main current circuit	AC
operational current	
• at AC-1	
— up to 690 V at ambient temperature 40 °C rated value	1 700 A
— up to 690 V at ambient temperature 55 °C rated	1 700 A

value	
— up to 1000 V at ambient temperature 40 °C rated value	1 700 A
— up to 1000 V at ambient temperature 55 °C rated value	1 700 A
minimum cross-section in main circuit at maximum AC-1 rated value	1 500 mm ²
no-load switching frequency	
• at AC	300 1/h
• at DC	300 1/h
operating frequency at AC-1 maximum	300 1/h
Control circuit/ Control	
type of voltage of the control supply voltage	AC/DC
control supply voltage at AC	
• at 50 Hz rated value	100 ... 240 V
• at 60 Hz rated value	100 ... 240 V
control supply voltage at DC	
• rated value	100 ... 220 V
operating range factor control supply voltage rated value of magnet coil at DC	
• initial value	0.85
• full-scale value	1.1
operating range factor control supply voltage rated value of magnet coil at AC	
• at 50 Hz	0.85 ... 1.1
• at 60 Hz	0.85 ... 1.1
design of the surge suppressor	with varistor
apparent pick-up power of magnet coil at AC	
• at 50 Hz	1 800 VA
• at 60 Hz	1 800 VA
apparent holding power of magnet coil at AC	
• at 50 Hz	33 VA
• at 60 Hz	33 VA
closing power of magnet coil at DC	2 800 W
holding power of magnet coil at DC	11 W
closing delay	
• at AC	80 ms
• at DC	80 ms
opening delay	
• at AC	70 ms
• at DC	70 ms
control version of the switch operating mechanism	Standard A1 - A2
Auxiliary circuit	
number of NC contacts for auxiliary contacts	2
• attachable	4
• instantaneous contact	2
number of NO contacts for auxiliary contacts	2
• attachable	4
• instantaneous contact	2
operational current at AC-12 maximum	16 A
operational current at AC-15	
• at 230 V rated value	3 A
• at 400 V rated value	1.5 A
• at 500 V rated value	1.4 A
operational current at DC-13	
• at 48 V rated value	2 A
• at 60 V rated value	2 A
• at 110 V rated value	1 A
• at 125 V rated value	0.55 A
• at 220 V rated value	0.27 A
• at 600 V rated value	0.1 A
Short-circuit protection	

product function short circuit protection	No				
design of the fuse link					
<ul style="list-style-type: none"> • for short-circuit protection of the main circuit <ul style="list-style-type: none"> — with type of assignment 2 required • for short-circuit protection of the auxiliary switch required 	aR: 2200 A (1000 V, 42 kA) gG: 16 A (600 V, 1 kA)				
Installation/ mounting/ dimensions					
mounting position	+/-30° rotation possible on vertical mounting surface; can be tilted forward and backward by +/- 30° on vertical mounting surface				
fastening method	screw fixing				
<ul style="list-style-type: none"> • side-by-side mounting 	No				
height	403 mm				
width	431 mm				
depth	246 mm				
required spacing					
<ul style="list-style-type: none"> • for grounded parts <ul style="list-style-type: none"> — forwards — at the side 	245 mm 215 mm				
net weight	34.6 kg				
Connections/ Terminals					
type of electrical connection					
<ul style="list-style-type: none"> • for main current circuit • for auxiliary and control circuit • at contactor for auxiliary contacts • of magnet coil 	busbar connection screw-type terminals Screw-type terminals Screw-type terminals				
width of connection bar	103 mm				
thickness of connection bar	10 mm				
diameter of holes	15 mm				
connectable conductor cross-section for auxiliary contacts					
<ul style="list-style-type: none"> • solid or stranded • finely stranded with core end processing 	1 ... 2.5 mm ² 1 ... 2.5 mm ²				
type of connectable conductor cross-sections					
<ul style="list-style-type: none"> • for auxiliary contacts <ul style="list-style-type: none"> — solid — solid or stranded — finely stranded with core end processing • for AWG cables for auxiliary contacts 	2x (1 ... 2,5 mm ²) 2x (1 ... 2.5 mm ²) 2x (1 ... 2,5 mm ²) 2x (16 ... 14)				
Safety related data					
product function					
<ul style="list-style-type: none"> • mirror contact according to IEC 60947-4-1 • positively driven operation according to IEC 60947-5-1 	Yes No				
protection class IP on the front according to IEC 60529	IP00				
Certificates/ approvals					
General Product Approval					
EMC					
Declaration of Con- formity					
	Confirmation				
Declaration of Con- formity	other	Railway			
	Confirmation	Miscellaneous	Special Test Certifi- cate		
EG-Konf.					

Further information					
Siemens has decided to exit the Russian market (see here). https://press.siemens.com/global/en/pressrelease/siemens-wind-down-russian-business					

Siemens is working on the renewal of the current EAC certificates.

Please contact your local Siemens office on the status of validity of the EAC certification if you intend to import or offer to supply these products to an EAC relevant market (other than the sanctioned EAEU member states Russia or Belarus).

Information on the packaging

<https://support.industry.siemens.com/cs/ww/en/view/109813875>

Information- and Downloadcenter (Catalogs, Brochures,...)

<https://www.siemens.com/ic10>

Industry Mall (Online ordering system)

<https://mall.industry.siemens.com/mall/en/en/Catalog/product?mlfb=3RT1485-6AP36>

Cax online generator

<http://support.automation.siemens.com/WW/CAXorder/default.aspx?lang=en&mlfb=3RT1485-6AP36>

Service&Support (Manuals, Certificates, Characteristics, FAQs,...)

<https://support.industry.siemens.com/cs/ww/en/ps/3RT1485-6AP36>

Image database (product images, 2D dimension drawings, 3D models, device circuit diagrams, EPLAN macros, ...)

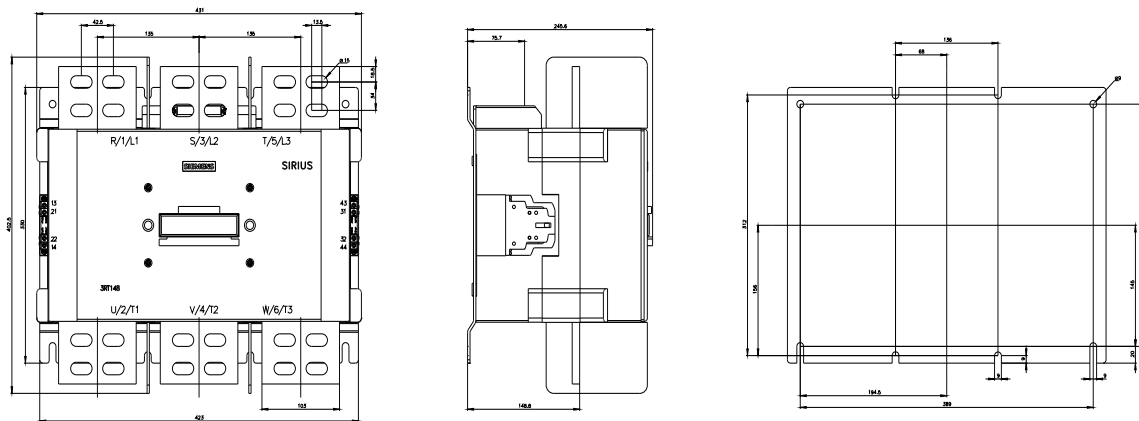
http://www.automation.siemens.com/bilddb/cax_de.aspx?mlfb=3RT1485-6AP36&lang=en

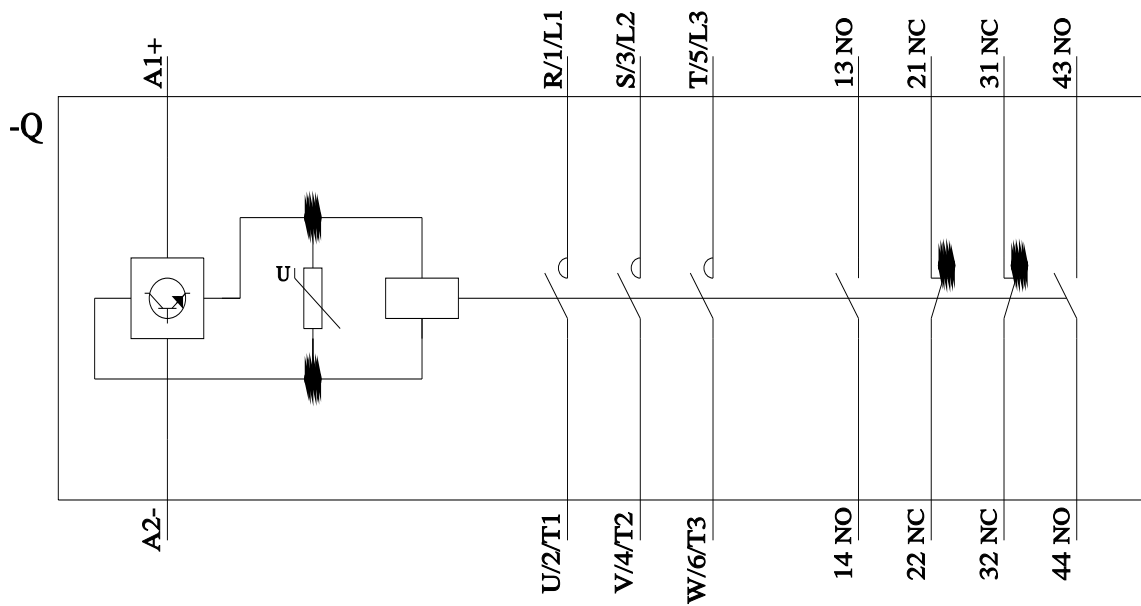
Characteristic: Tripping characteristics, I²t, Let-through current

<https://support.industry.siemens.com/cs/ww/en/ps/3RT1485-6AP36/char>

Further characteristics (e.g. electrical endurance, switching frequency)

<http://www.automation.siemens.com/bilddb/index.aspx?view=Search&mlfb=3RT1485-6AP36&objecttype=14&gridview=view1>





last modified:

2/13/2023 