

Article No. : 1FK2210-3AB11-1SA0

Client order no. :
Order no. :
Offer no. :
Remarks :

Item no. :
Consignment no. :
Project :

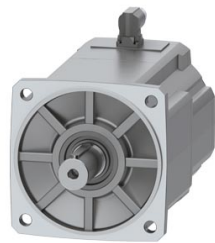


Figure similar

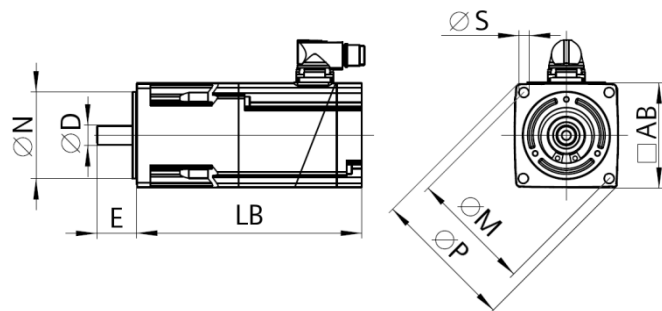
Basic motor data	
Motor type	Permanent-magnet synchronous motor, Natural cooling, IP65
Motor type	Compact
Static torque	30.00 Nm
Static current	8.5 A
Maximum torque	90.00 Nm
Maximum current	31.5 A
Maximum speed	2,500 rpm
Rotor moment of inertia	94.8000 kgcm ²
Weight	25.0 kg

Rated data	
SINAMICS S210, 3AC 400V	
Rated speed	1,500 rpm
Rated torque	28.50 Nm
Rated current	8.3 A
Rated power	4.50 kW

Encoder system	
Encoder system	Encoder AS22DQC: Absolute encoder single turn 22 bit

Motor connection	
Connection type	OCC for S210
Connector size	M23

Mechanical data	
Design acc. to Code I	IM B5 (IM V1, IM V3)
Vibration severity grade	Grade A
Shaft height	100
Flange size (AB)	192 mm
Centering ring (N)	180 mm
Hole circle (M)	215 mm
Screw-on hole (S)	14.0 mm
Overall length (LB)	257 mm
Diameter of shaft (D)	38 mm
Length of shaft (E)	80 mm
Length of flange diagonal (P)	244 mm
Shaft end	Fitted key
Color of the housing	Standard (Anthracite, similar to RAL 7016)



Holding brake	
Holding torque	32.00 Nm
Average dynamic torque	17.00 Nm
Opening time	120 ms
Closing time	40 ms
Maximum single switching energy ¹⁾	6,600 J
Service life, operating energy	2,400,000 J
Holding current ²⁾	0.5 A
Break-induced current for 500 ms ²⁾	1.4 A

¹⁾Up to three consecutive emergency stops and up to 25% of all emergency stops as a Wmax high energy stop possible.
²⁾Typical value for 20°C ambient temperature. At -15°C the break-induced currents can be increased by up to 30%.