



LED module, red for plug-in relay, PT and RT series, for DC 24 V with freewheeling diode

General technical data		
display version LED	Yes	
protection class IP	IP00	
design of the switching function positively driven	No	
reference code according to IEC 81346-2	P	
Substance Prohibitance (Date)	05/01/2012	
Control circuit/ Control		
control supply voltage at DC		
• rated value	24 V	
product component plug-in socket	No	
Auxiliary circuit		
number of NC contacts for auxiliary contacts	0	
number of NO contacts for auxiliary contacts	0	
number of CO contacts for auxiliary contacts	0	
Main circuit		
type of voltage	DC	
Display		
display version as status display by LED	LED red	
Connections/ Terminals		
product function removable terminal	No	
Installation/ mounting/ dimensions		
mounting position	any	
height	10.5 mm	
width	11.4 mm	
depth	32 mm	
Ambient conditions		
ambient temperature		
• during storage	-25 ... +70 °C	
• during transport	-25 ... +70 °C	
Certificates/ approvals		
General Product Approval	Declaration of Conformity	other

[Confirmation](#)



EG-Konf.



[Confirmation](#)

Further information

Siemens has decided to exit the Russian market (see here).
<https://press.siemens.com/global/en/pressrelease/siemens-wind-down-russian-business>

Siemens is working on the renewal of the current EAC certificates.

Please contact your local Siemens office on the status of validity of the EAC certification if you intend to import or offer to supply these products to an EAC relevant market (other than the sanctioned EAEU member states Russia or Belarus).

Information on the packaging

<https://support.industry.siemens.com/cs/ww/en/view/109813875>

Information- and Downloadcenter (Catalogs, Brochures,...)

<https://www.siemens.com/ic10>

Industry Mall (Online ordering system)

<https://mall.industry.siemens.com/mall/en/en/Catalog/product?mlfb=LZS:PTML0024>

Cax online generator

<http://support.automation.siemens.com/WW/CAXorder/default.aspx?lang=en&mlfb=LZS:PTML0024>

Service&Support (Manuals, Certificates, Characteristics, FAQs,...)

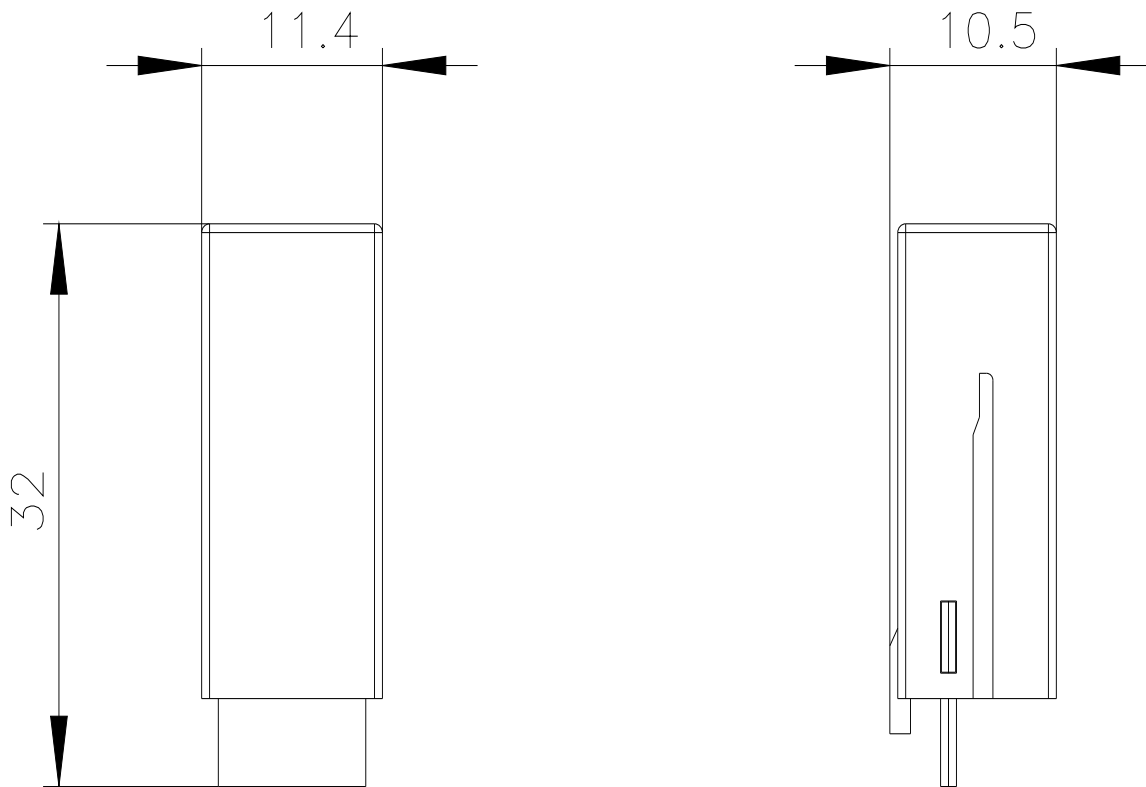
<https://support.industry.siemens.com/cs/ww/en/ps/LZS:PTML0024>

Image database (product images, 2D dimension drawings, 3D models, device circuit diagrams, EPLAN macros, ...)

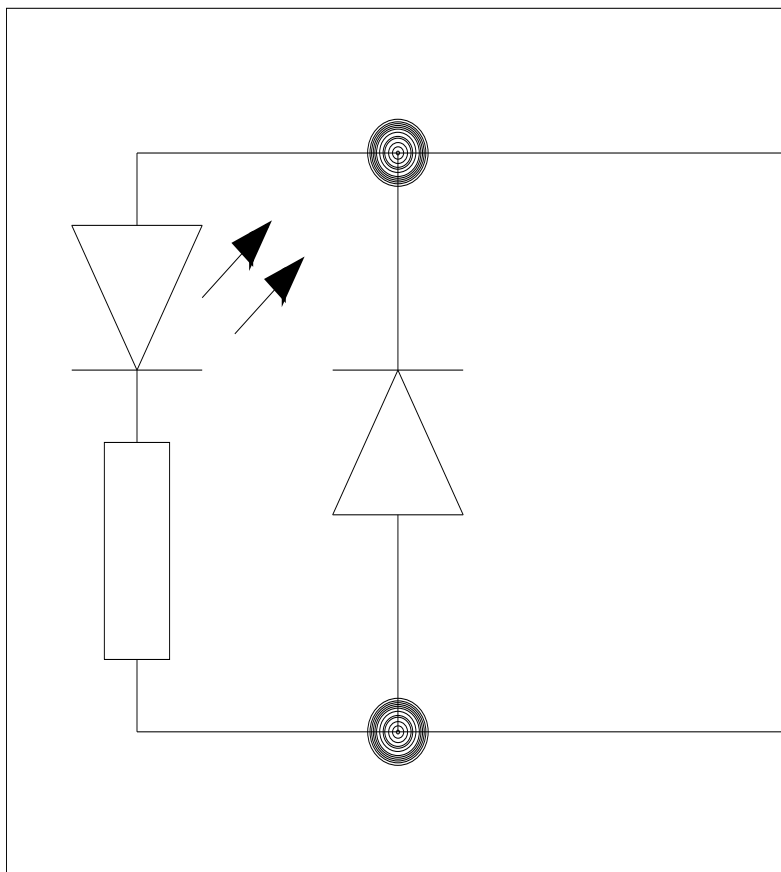
http://www.automation.siemens.com/bilddb/cax_de.aspx?mlfb=LZS:PTML0024&lang=en

Characteristic: Derating

<https://support.industry.siemens.com/cs/ww/en/ps/LZS:PTML0024/manual>



-P



last modified:

12/23/2020 