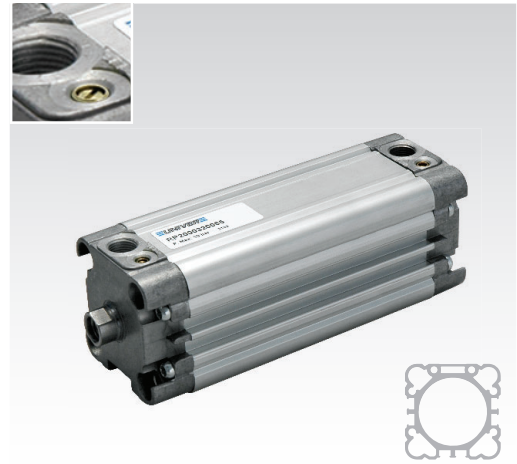


### CHARACTERISTICS

Ambient temperature	-20 ÷ 80 °C
Fluid	filtered air, with or without lubrication
Working pressure	1,5 ÷ 10 bar
End-caps	die-cast zamak (Ø 16 ÷ 25 mm) die-cast aluminium (Ø 32 ÷ 63 mm)
Barrel	anodized aluminium
Piston	aluminium
Guide slide	acetalic resin
Piston rod	chromium-plated steel, stainless steel upon request
Piston seal	NBR
Guide bush for piston rod	acetalic resin
Shock absorber seals	NBR
Cushionings	adjustable on both sides (UNIVER Original standard supplied)
Magnet	plasto-ferrite (standard supplied)
Other available versions	tandem, two-position tandem, opposed, with common piston rod (upon request)



Available ATEX version upon request  
 II 2Gc IIC T5 II 2Dc T100°C

### CODIFICATION KEY

R	P	2	0	0	0	3	2	0	0	2	5		
1	2	3	4	5	6	7							

1 Series	2 Type	3 Version	4 Bore (mm)
RP = Ø 16÷63 mm UNITOP Compact Cylinders	<b>1</b> = Stainless steel female piston rod <b>2</b> = Chromium-plated steel female piston rod <b>Upon request</b> <b>3</b> = Stainless steel male piston rod (Ø40÷63) <b>4</b> = Chromium-plated steel male piston rod (Ø40÷63)	<b>00</b> = D.A. Standard version <b>01</b> = D.A. Through piston rod <b>10</b> = D.A. Non-rotating guided piston rod <b>11</b> = D.A. Non-rotating guided through piston rod <b>20</b> = D.A. Long piston (Ø32÷63) <b>60</b> = S.A. Retracted piston rod <b>70</b> = S.A. Extended piston rod  D.A. = Double acting S.A. = Single acting	<b>016</b> = Ø16 <b>020</b> = Ø20 <b>025</b> = Ø25 <b>032</b> = Ø32 <b>040</b> = Ø40 <b>050</b> = Ø50 <b>063</b> = Ø63

5 Stroke (mm)	6 Option	7 ATEX option
<b>Single acting</b> <b>0005 - 0010</b> (Ø16÷25) <b>0005 - 0010 - 0015 - 0020 - 0025</b> (Ø32÷63) <b>Double acting</b> <b>0005 - 0010 - 0015 - 0020 - 0025 - 0030 - 0040</b> <b>0050 - 0060 - 0080</b>	<b>Max standard stroke</b> <b>0040</b> (Ø16) <b>0050</b> (Ø20-25) <b>0080</b> (Ø32÷63)  <b>Max stroke with non-rotating guided piston rod (upon request)</b> <b>0100</b> (Ø16) <b>0200</b> (Ø20-25) <b>0400</b> (Ø32-40) <b>0500</b> (Ø50-63)	<b>C</b> = With flange for versions: 100-101-120-160-170 200-201-220-260-270 <b>H</b> = Hollow piston rod only for through piston rod versions without flange  <b>X</b> = Atex (upon request)  See ATEX Catalogue for types and versions

For high temperature applications please contact our Sales Office

### FIXING ELEMENTS AND ACCESSORIES

Ø	Flange for female piston rod	Rear male hinge	Rear female hinge with pin	Counter hinge 90°	Front/rear flange	Angle bracket	Intermediate hinge	Centering adaptor ring	Hinge support	DF sensor and DHF covering strip	Cable clamping for DF sensor
16			-	-			-	-	-		
20	RPF-28016	RPF-11016	-	-	RPF-12016	RPF-13016	-	-	-		
25	RPF-28020	RPF-11020	-	-	RPF-12020	RPF-13020	-	-	-		
25	RPF-28025	RPF-11025	-	-	RPF-12025	RPF-13025	-	-	-		
32	RPF-28032	KF-11032	KF-10032A	KF-19032	KF-12032	KF-13032	KDF-14032	RSF-09032	KF-41032		
40	RPF-28040	-	RPF-10040A	KF-19040	RPF-12040	RPF-13040	RPF-14040	RSF-09040	KF-41040050		
50	RPF-28050	-	RPF-10050A	KF-19050	RPF-12050	RPF-13050	RPF-14050	RSF-09050	KF-41040050		
63	RPF-28063	-	RPF-10063A	KF-19063	RPF-12063	RPF-13063	RPF-14063	RSF-09063	KF-41063080		

1

### CHARACTERISTICS

Ambient temperature	-20 ÷ 80 °C
Fluid	filtered air, with or without lubrication
Working pressure	1,5 ÷ 10 bar
End-caps	die-cast zamak (Ø 16 ÷ 25 mm) die-cast aluminium (Ø 32 ÷ 100 mm)
Barrel	anodized aluminium
Piston	aluminium
Guide slide	acetalic resin
Piston rod	chromium-plated steel, stainless steel upon request
Piston seal	NBR
Guide bush for piston rod	acetalic resin
Shock absorber seals	NBR
Cushionings	adjustable on both sides (UNIVER Original standard supplied)
Magnet	plasto-ferrite (standard supplied)
Other available versions	tandem, two-position tandem, opposed tandem, with common piston rod (upon request)



Available ATEX version upon request  
CE Ex II 2Gc IIC T5 II 2Dc T100°C

### CODIFICATION KEY

R	M	3	0	0	0	3	2	0	0	2	5		
1	2	3	4	5	6	7							

<b>1 Series</b> RM = Ø 16÷100 mm ISO 21287 Compact Cylinders	<b>2 Type</b> 3 = Stainless steel male piston rod 4 = Chromium-plated steel male piston rod  Upon request 1 = Stainless steel female piston rod (Ø40÷100) 2 = Chromium-plated steel female piston rod (Ø 40÷100)	<b>3 Version</b> 00 = D.A. Standard version 01 = D.A. Through piston rod 20 = D.A. Long piston (Ø32÷63) 60 = S.A. Retracted piston rod 70 = S.A. Extended piston rod  D.A. = Double acting S.A. = Single acting	<b>4 Bore (mm)</b> 016 = Ø16 050 = Ø50 020 = Ø20 063 = Ø63 025 = Ø25 080 = Ø80 032 = Ø32 100 = Ø100 040 = Ø40	<b>5 Stroke (mm)</b> <b>Single acting</b> 0005 - 0010 (Ø16÷25) 0005 - 0010 - 0015 - 0020 - 0025 (Ø32÷100) <b>Double acting</b> 0005 - 0010 - 0015 - 0020 - 0025 - 0030 0040 - 0050 - 0060 - 0080	<b>6 Option</b> H = Hollow piston rod only for through piston rod versions without flange	<b>7 ATEX option</b> X = Atex (upon request)  See ATEX Catalogue for types and versions
---	--	---	--	--	--	---

For high temperature applications please contact our Sales Office

### FIXING ELEMENTS AND ACCESSORIES

Ø	Female fork with clips	Articulated self-lubricating fork	Fork with axially mounted articulated pin	Fork with angle mounted articulated pin	Floating joint	Centering adaptor ring	Female rear hinge with pin	Counter hinge 90° (CETOP)	Counter hinge 90°	Counter hinge 90° (CNOMO)	Narrow female hinge with pin
16						-					
20	MF-15012	MF-17012	MF-22016	MF-23012	MF-24012	-	-	-	-	-	-
25	MF-15020	MF-17020	MF-22020	MF-23020	MF-24020	-	-	-	-	-	-
32	KF-15032	KF-17032	KF-22025	KF-23025	KF-24032	RSF-09032	KF-10032A	KF-19032CTA	KF-19032	KF-19032CN	KF-10032AS
40	KF-15032	KF-17032	KF-22025	KF-23025	KF-24032	RSF-09040	KF-10040A	KF-19040CTA	KF-19040	KF-19040050CN	KF-10040AS
50	KF-15040	KF-17040	KF-22040	KF-23040	KF-24040	RSF-09050	KF-10050A	KF-19050CTA	KF-19050	KF-19040050CN	KF-10050AS
63	KF-15040	KF-17040	KF-22040	KF-23040	KF-24040	RSF-09063	KF-10063A	KF-19063CTA	KF-19063	KF-19063080CN	KF-10063AS
80	KF-15050	KF-17050	KF-22050	KF-23050	KF-24050	RSF-09080	KF-10080A	KF-19080CTA	KF-19080	KF-19063080CN	KF-10080AS
100	KF-15050	KF-17050	KF-22050	KF-23050	KF-24050	RSF-09100	KF-10100A	KF-19100CTA	KF-19100	KF-19100125CN	KF-10100AS
Ø	Articulated counter hinge	Articulated rear male hinge	Rear male hinge	Front/rear flange	Angle bracket	Front/rear hinge with floating pin	Hinge support	ISO intermediate hinge	DF sensor and DHF covering strip	Cable clamping for DF sensor	
16											
20	-	-	RPF-11016	RPF-12016	RPF-13016	-	-	-	DF DHF-0020100	DF-001	
25	-	-	RPF-11020	RPF-12020	RPF-13020	-	-	-			
32	-	-	RPF-11025	RPF-12025	RPF-13025	-	-	-			
40	KF-19032SC	KF-11032S	KF-11032	KF-12032	KF-13032	KF-14032AP	KF-41032	KDF-14032			
50	KF-19040SC	KF-11040S	KF-11040	KF-12040	KF-13040	KF-14040AP	KF-41040050	RPF-14040			
63	KF-19050SC	KF-11050S	KF-11050	KF-12050	KF-13050	KF-14050AP	KF-41040050	RPF-14050			
80	KF-19063SC	KF-11063S	KF-11063	KF-12063	KF-13063	KF-14063AP	KF-41063080	RPF-14063			
100	KF-19080SC	KF-11080S	KF-11080	KF-12080	KF-13080	KF-14080AP	KF-41063080	KDF-14080			
	KF-19100SC	KF-11100S	KF-11100	KF-12100	KF-13100	KF-14100AP	KF-41100125	KDF-14100			