

Item no.: 2886733

Data Sheet

Shaft coupling 10 x 30 mm - 6 mm shaft, Outer diameter : 20 mm



Technical data

Bore \varnothing : 10.0 mm, 6.0 mm

Dim(\varnothing x L): 20 mm x 30 mm

(\varnothing): 20 mm

Length: 30 mm

Rated Torque (TKN) : 5 N.m.

Max. Torque (TK Max.) : 10 N.m.

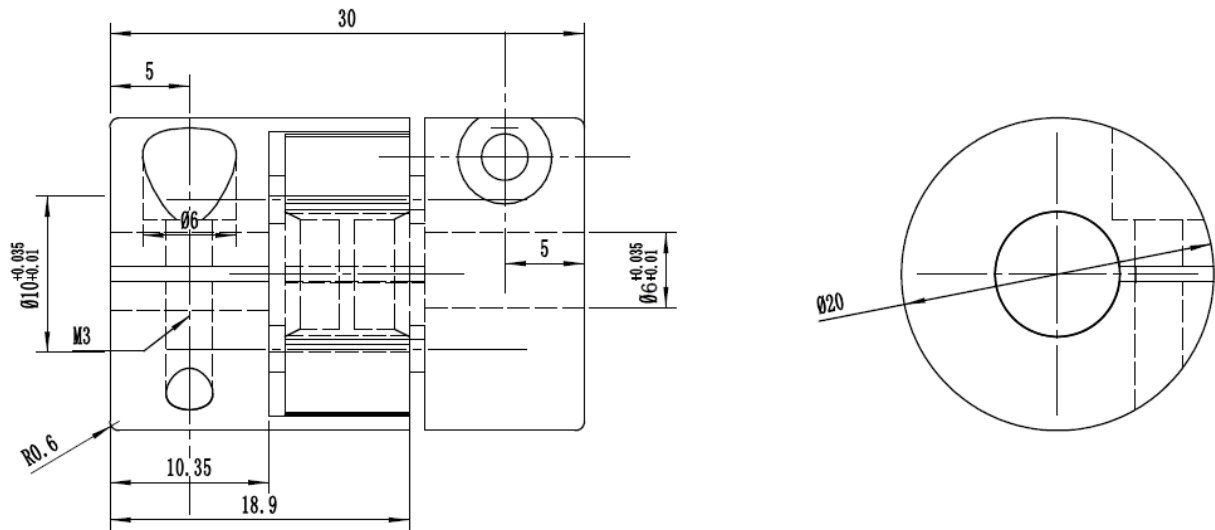
Screw type : M3

Material: Aluminum alloy, Polyurethane

Product type: Backlash free elastomer coupling

Item no.: 2886733

Data Sheet



Abmessungen in mm